

FLORIDA DEPARTMENT OF ENVIRONMENTAL PROTECTION CERTIFIED CORNER RECORD

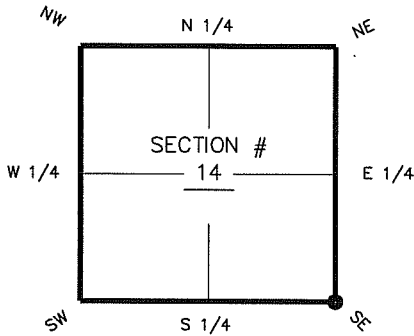
DOC. # _____

N-21

CORNER DESCRIPTION: MONUMENTATION DESCRIPTION (EVIDENCE FOUND OR METHOD TO SET)

Depict corner with

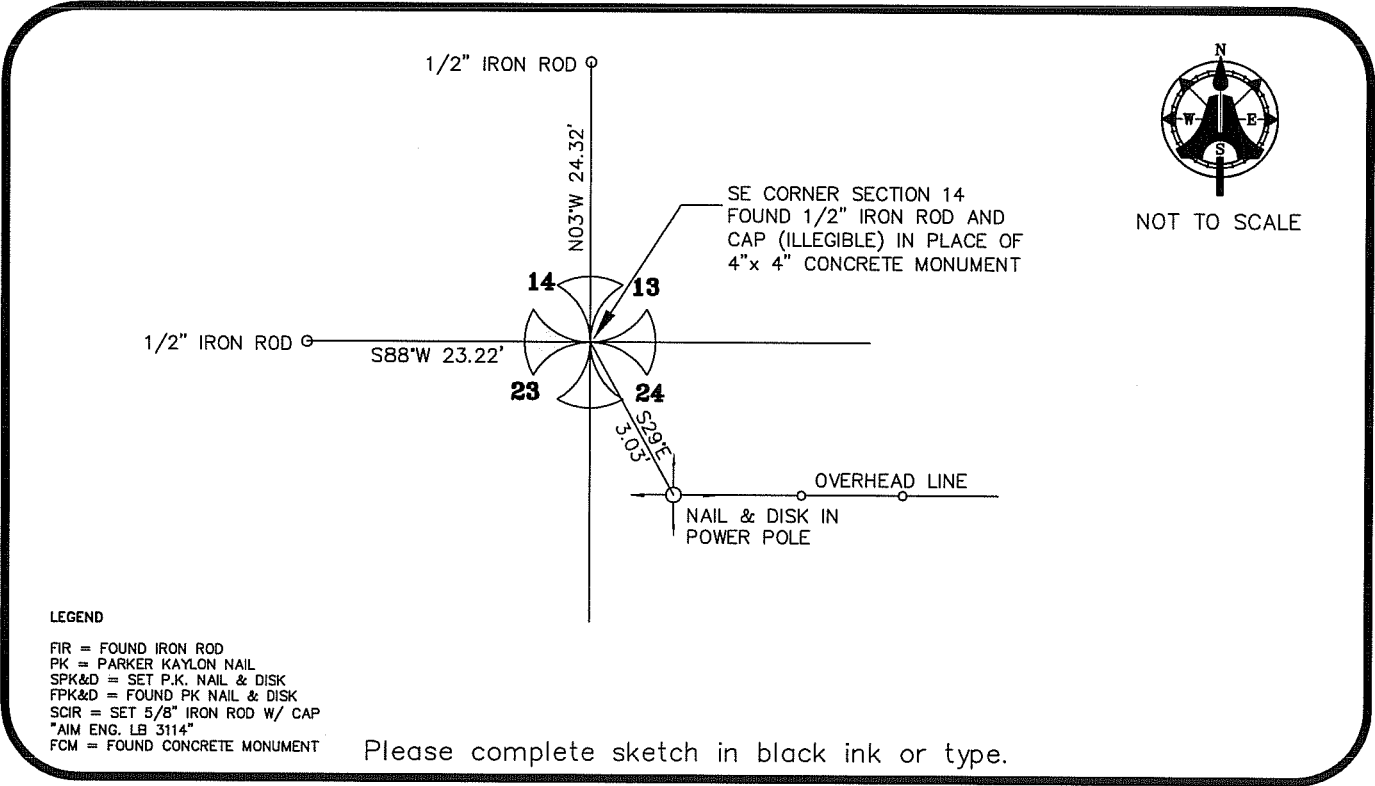
FOUND 1/2" IRON ROD AND CAP (ILLEGIBLE) IN PLACE OF 4"x 4" CONCRETE MONUMENT.



SE corner of Section 14
Twp 46 S, Rge 27 E
Tallahassee Base Meridian,
LEE County(s), Florida

HORIZONTAL POSITION INFORMATION (if determined):

Latitude 26° 27' 56.4343" N Longitude 81° 34' 47.5563" W
Y(NORTHING-Ft.) 775173.19 X(EASTING-Ft.) 793608.41 Zone FL W
Convergence 00° 11' 14.0" Scale factor 0.99996284
Coordinate determination (circle one): Field traverse GPS
Horizontal datum (circle one): NAD27 NAD83(1986) NAD83(1986) other (explain)
Accuracy (circle one): 1st 2nd 3rd other NAD83(1999)



LEGEND

- FIR = FOUND IRON ROD
- PK = PARKER KAYLON NAIL
- SPK&D = SET P.K. NAIL & DISK
- FPK&D = FOUND PK NAIL & DISK
- SCIR = SET 5/8" IRON ROD W/ CAP
- "AIM ENG. LB 3114"
- FCM = FOUND CONCRETE MONUMENT

Please complete sketch in black ink or type.

SURVEYORS CERTIFICATE:

I certify the monument and accessories indicated above were field located on FEB 23, 2007

SIGNATURE 5688 PSM NO.
AIM ENGINEERING & SURVEYING, INC. LB 3114
FIRM OR AGENCY LB NO.
5300 LEE BOULEVARD

SEND ORIGINAL TO:
Department of Environmental Protection
Bureau of Surveying and Mapping
3900 Commonwealth Boulevard
Mail Station 105
Tallahassee, Florida 32399

LEHIGH ACRES, FLORIDA 33971-1026
CITY STATE ZIP
(239) 332-4569 7/12/07
PHONE NUMBER DATE

| |
|------------------------|
| D.E.P. USE ONLY |
| Processed: _____ |
| B.L.M. - I.D. _____ |
| QUAD - I.D. _____ |

EMBOSSSED SEAL OVER SIGNATURE