

FLORIDA DEPARTMENT OF ENVIRONMENTAL PROTECTION
CERTIFIED CORNER RECORD

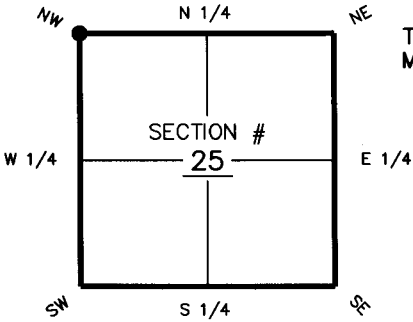
DOC. # 094835

CORNER DESCRIPTION: MONUMENTATION DESCRIPTION (EVIDENCE FOUND OR METHOD TO SET)

Depict corner with ●

FOUND A PK NAIL AND DISK STAMPED "LEE CTY DOT & E" IN THE EAST BOUND LANE OF CORKSCREW ROAD.

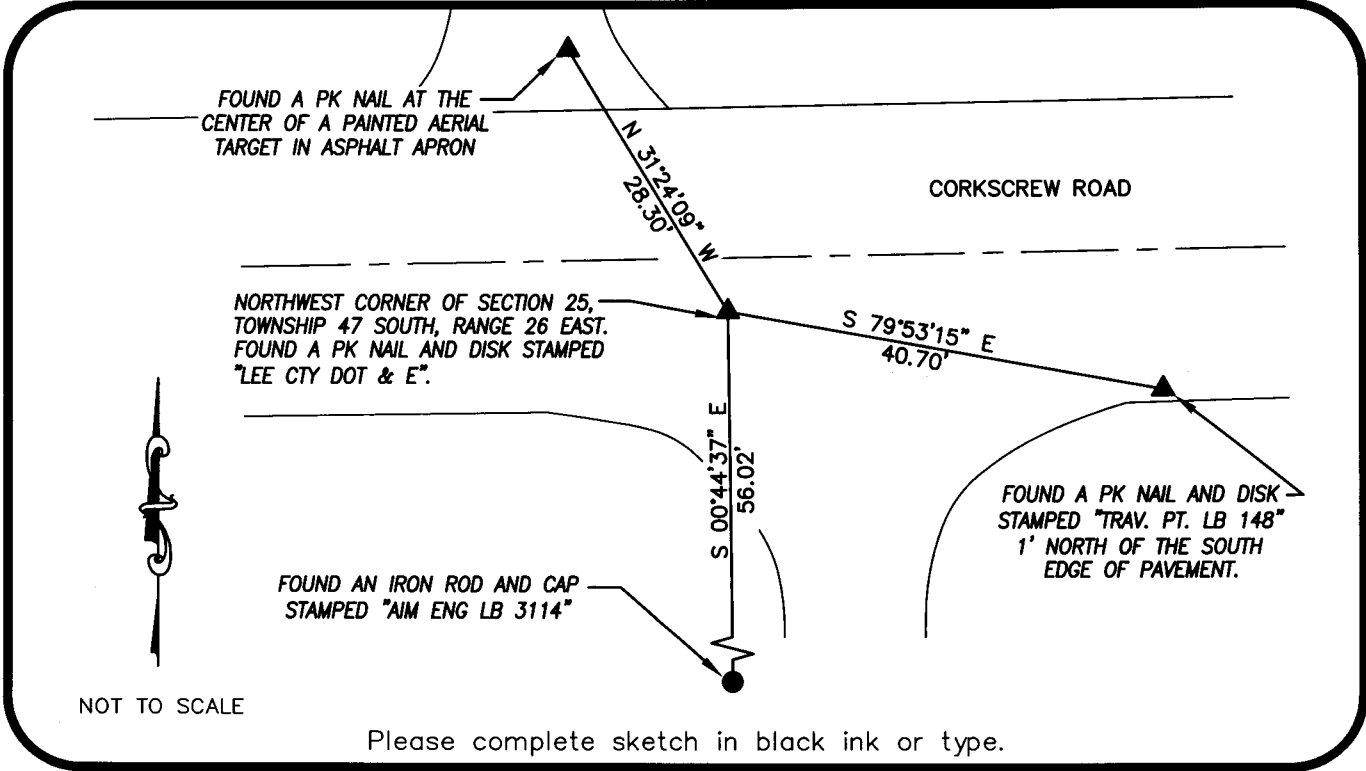
THIS POINT WAS RECONSTRUCTED BY LEE COUNTY SURVEYOR ART PARSONS FROM A MONUMENT BELOW THE ROAD.



NW corner of Section 25
 Twp 46 South, Rge 27 East
 Tallahassee Base Meridian,
 LEE County(s), Florida

HORIZONTAL POSITION AND HEIGHT INFORMATION (if determined):

Latitude 26°27'03.9687" Longitude -81°34'44.4242"
 Y(NORTHING-Ft.) 769876.78 X(EASTING-Ft.) 793910.38 Zone FL W
 Convergence 0°11'15.0987" Scale factor 0.99996293
 Coordinate determination (circle one): Field traverse GPS
 Horizontal datum (circle one): NAD27 NAD83(1986) NAD83(1990) other (explain) B3(1999)
 Accuracy (circle one): 1st 2nd 3rd other GPS NETWORK



SURVEYORS CERTIFICATE:

I certify the monument and appurtenances indicated above were field located on 7/11/2008

James S. ...
 SIGNATURE

SOUTHERN MAPPING
 FIRM OR AGENCY

4376 Corporate Square
 ADDRESS

Naples, Florida 34104
 CITY STATE ZIP

SEND ORIGINAL TO:
 Department of Environmental Protection
 Bureau of Survey and Mapping
 3900 Commonwealth Boulevard
 Mail Station 105
 Tallahassee, Florida 32399

D.E.P. USE ONLY

Completeness checked by: JH

Accepted and filed: 08-05-08 Date

B.L.M. - I.D. W00300

QUAD - I.D. 2013 Corkscrew

EMBOSSSED SEAL OVER SIGNATURE