

FLORIDA DEPARTMENT OF ENVIRONMENTAL PROTECTION CERTIFIED CORNER RECORD

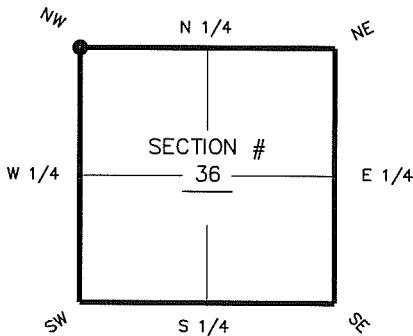
DOC. # _____

V-21

CORNER DESCRIPTION: MONUMENTATION DESCRIPTION (EVIDENCE FOUND OR METHOD TO SET)

Depict corner with

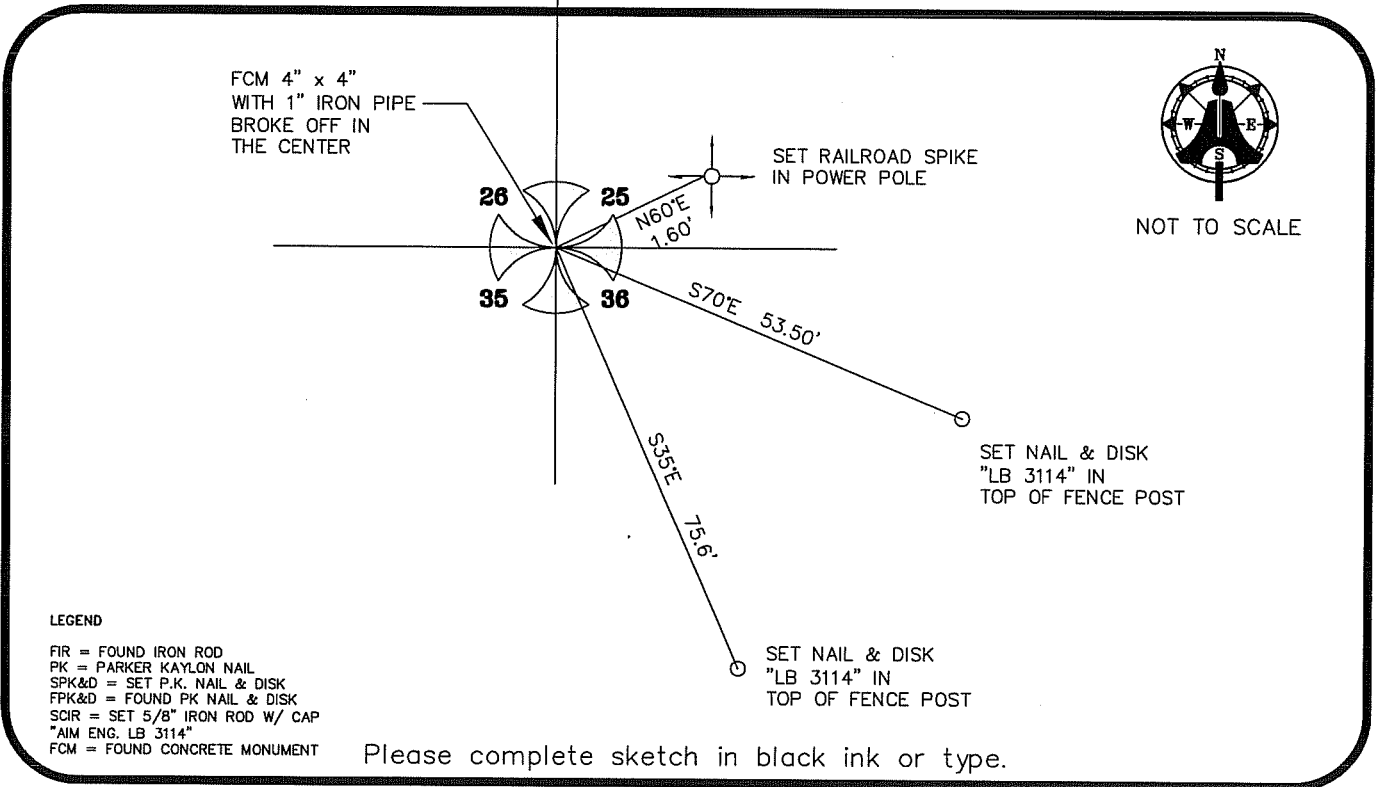
FOUND 4"x 4" CONCRETE MONUMENT
WITH 1" IRON PIPE BROKEN OFF IN THE CENTER



NW corner of Section 36
Twp 46 S, Rge 27 E
Tallahassee Base Meridian,
LEE County(s), Florida

HORIZONTAL POSITION INFORMATION (if determined):

Latitude 26° 26' 11.7633" N Longitude 81° 34' 43.4417" W
Y(NORTHING-Ft.) 764606.00 X(EASTING-Ft.) 794016.93 Zone FL W
Convergence 00° 11' 15.2" Scale factor 0.99996297
Coordinate determination (circle one): Field traverse GPS
Horizontal datum (circle one): NAD27 NAD83(1986) NAD83(1990) other (explain)
Accuracy (circle one): 1st 2nd 3rd other NAD83 (1999)



LEGEND

- FIR = FOUND IRON ROD
- PK = PARKER KAYLON NAIL
- SPK&D = SET P.K. NAIL & DISK
- FPK&D = FOUND PK NAIL & DISK
- SCIR = SET 5/8" IRON ROD W/ CAP
- *AIM ENG. LB 3114"
- FCM = FOUND CONCRETE MONUMENT

Please complete sketch in black ink or type.

SURVEYORS CERTIFICATE:

I certify the monument and accessories indicated above were field located on FEBRUARY 2, 2007

_____ 5688
 SIGNATURE PSM NO.
AIM ENGINEERING & SURVEYING, INC. LB 3114
 FIRM OR AGENCY LB NO.
5300 LEE BOULEVARD
 ADDRESS
LEHIGH ACRES, FLORIDA 33971-1026
 CITY STATE ZIP
(239) 332-4569 7/12/07
 PHONE NUMBER DATE

SEND ORIGINAL TO:
Department of Environmental Protection
Bureau of Surveying and Mapping
3900 Commonwealth Boulevard
Mail Station 105
Tallahassee, Florida 32399

D.E.P. USE ONLY	
Processed: _____	_____
B.L.M. - I.D. _____	_____
QUAD - I.D. _____	_____

EMBOSSSED SEAL OVER SIGNATURE