

FLORIDA DEPARTMENT OF ENVIRONMENTAL PROTECTION CERTIFIED CORNER RECORD

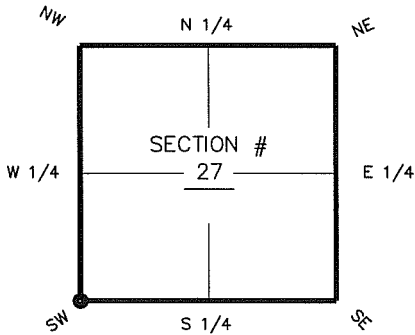
DOC. # _____

V-13

CORNER DESCRIPTION: MONUMENTATION DESCRIPTION (EVIDENCE FOUND OR METHOD TO SET)

Depict corner with

FOUND 4"x 4" CONCRETE MONUMENT
WITH 1 1/2" BRASS DISK.

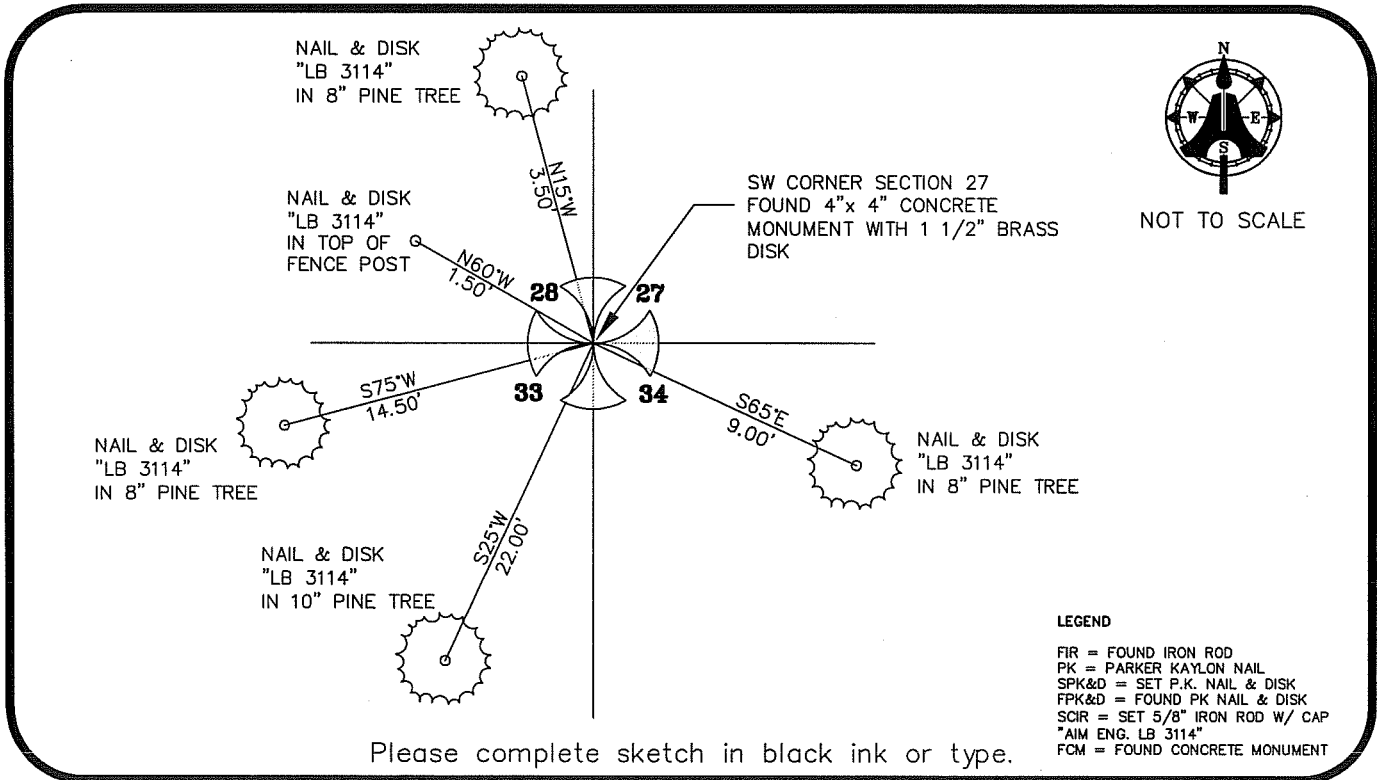


SW corner of Section 27
Twp 46 S, Rge 27 E
Tallahassee Base Meridian,
LEE County(s), Florida

HORIZONTAL POSITION INFORMATION (if determined):

Latitude 26° 26' 10.4349" N Longitude 81° 36' 40.4603" W
Y(NORTHING-Ft.) 764438.40 X(EASTING-Ft.) 783380.62 Zone FL W
Convergence 00° 10' 23.1" Scale factor 0.99995973

Coordinate determination (circle one): Field traverse GPS
Horizontal datum (circle one): NAD27 NAD83(1986) NAD83(1986) other (explain)
Accuracy (circle one): 1st 2nd 3rd other NAD83(1999)



Please complete sketch in black ink or type.

LEGEND
FIR = FOUND IRON ROD
PK = PARKER KAYLON NAIL
SPK&D = SET P.K. NAIL & DISK
FPK&D = FOUND PK NAIL & DISK
SCIR = SET 5/8" IRON ROD W/ CAP
"AIM ENG. LB 3114"
FCM = FOUND CONCRETE MONUMENT

SURVEYORS CERTIFICATE:

I certify the monument and accessories indicated above were field located on MARCH 7, 2007

[Signature] 5688
SIGNATURE PSM NO.
AIM ENGINEERING & SURVEYING, INC. LB 3114
FIRM OR AGENCY LB NO.
5300 LEE BOULEVARD
ADDRESS
LEHIGH ACRES, FLORIDA 33971-1026
CITY STATE ZIP
(239) 332-4569 8/2/2007
PHONE NUMBER DATE

SEND ORIGINAL TO:
Department of Environmental Protection
Bureau of Surveying and Mapping
3900 Commonwealth Boulevard
Mail Station 105
Tallahassee, Florida 32399

D.E.P. USE ONLY
Processed: _____
B.L.M. - I.D. _____
QUAD - I.D. _____

EMBOSSSED SEAL OVER SIGNATURE