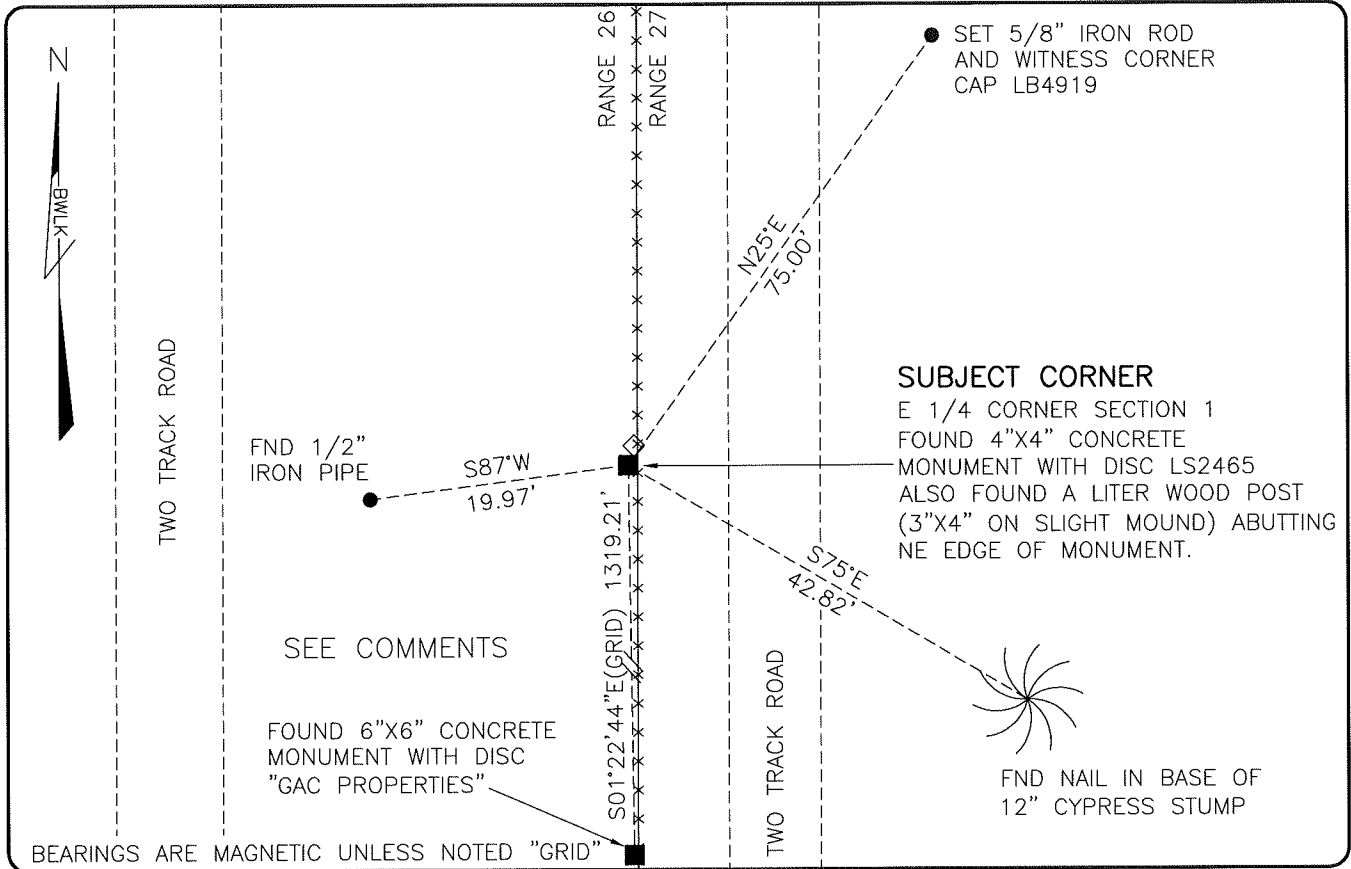


LAND CORNER RECORD

**PUBLIC WORKS
LEE COUNTY, FLORIDA**

Address - 1500 Monroe St., Ft. Myers, Fla. 33901

Phone : (239) 479-8900



COMMENTS:

FOUND SUBJECT CORNER IN HARMONY WITH HISTORICAL SURVEY RECORDS, CCR 13795 AND TOPO TIE COMPARED TO 1944 AERIAL. THERE IS AN APPROXIMATE 1320' EXCESS IN THE NORTHERN TIER OF THIS TOWNSHIP. THERE ARE TWO CCR'S FOR THIS CORNER AND ARE IN DISPUTE OF 1320'+/-. CAUTION SHOULD BE OBSERVED WORKING WITH THIS CORNER AND SUGGEST ANY CONVEYANCES TO BE BY METES AND BOUNDS DESCRIPTION.

HORIZONTAL POSITION INFORMATION

Florida West Zone, NAD 1983(2007 Adjustment)

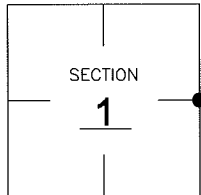
Northing(ft) 789303.94 Easting(ft) 767144.85

Latitude 26°30'17.1605" Longitude 81°39'38.3526"

Scale Factor 0.99995

CORNER DESCRIPTION

E 1/4 Corner
Section 1
Township 46
Range 26



EXISTING CERTIFIED CORNER RECORDS

Document No.	Date
<u>13795</u>	<u>7-1-81</u>
<u>6505</u>	<u>4-9-80</u>

The above documents are based on FDEP Bureau of Surveying and Mapping Record Information.

I hereby certify the monument and accessories shown above were field located on 5-29-08

Scott C. Whitaker

SCOTT C. WHITAKER
Professional Surveyor and Mapper
Florida Certificate No. 4324
Date Signed 7/1/08

BEAN, WHITAKER, LUTZ & KAREH, INC. (LB 4919)
13041 McGregor Boulevard
Fort Myers, Florida 33919-5910
Phone: (239) 481-1331

POINT NO. 14049

BLM REFERENCE NO. T46SR26E700640