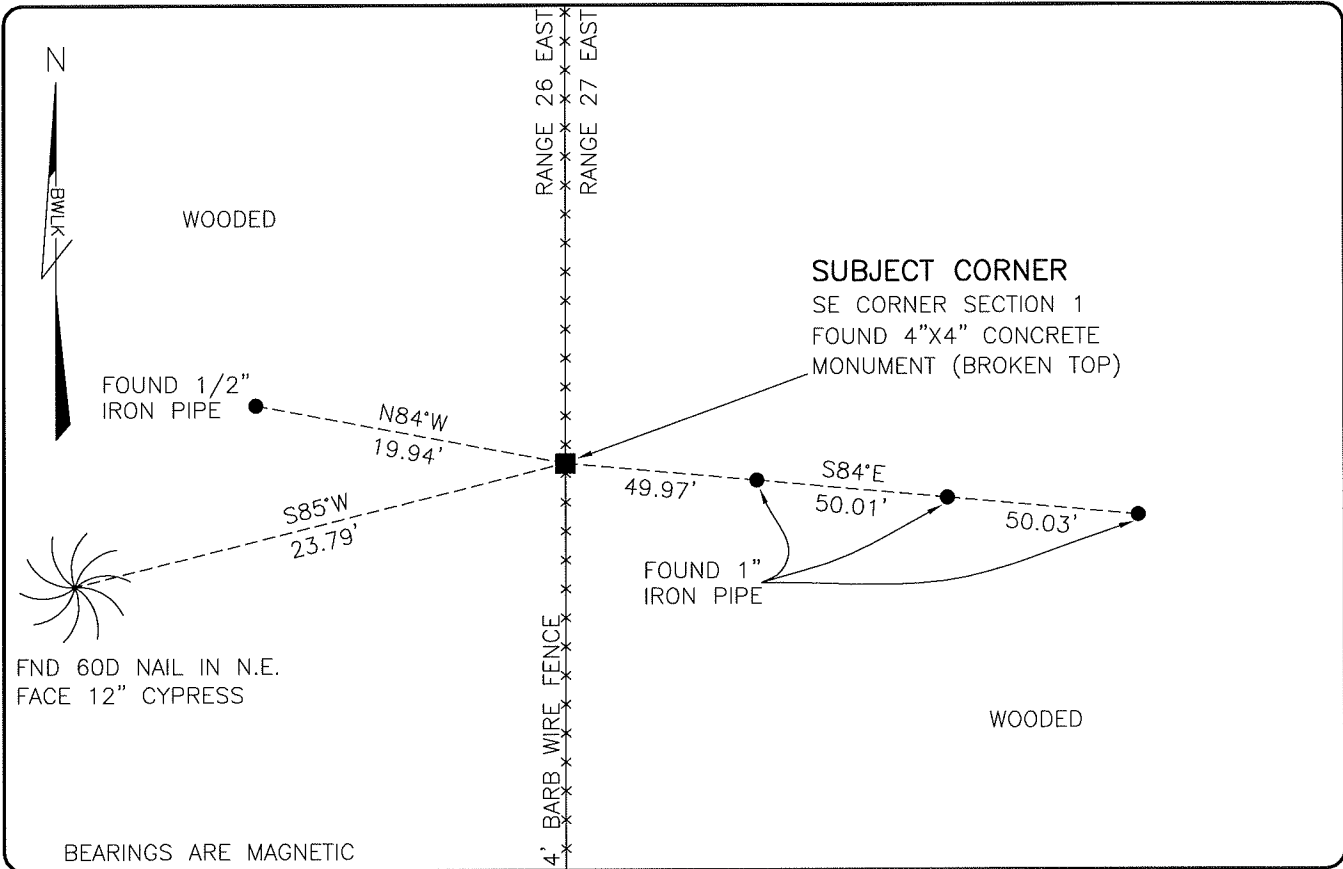


**LAND CORNER RECORD**

**PUBLIC WORKS  
LEE COUNTY, FLORIDA**

Address – 1500 Monroe St., Ft. Myers, Fla. 33901

Phone : (239) 479-8900



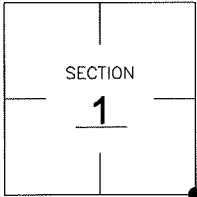
BEARINGS ARE MAGNETIC

**COMMENTS:**

FOUND SUBJECT CORNER IN HARMONY WITH HISTORICAL RECORDS AND CCR'S 13794 & 6506.

**CORNER DESCRIPTION**

SE Corner  
Section 1  
Township 46  
Range 26



**HORIZONTAL POSITION INFORMATION**

Florida West Zone, NAD 1983(2007 Adjustment)  
 Northing(ft) 785347.88 Easting(ft) 767211.66  
 Latitude 26°29'37.9777" Longitude 81°39'37.7324"  
 Scale Factor 0.99995

**EXISTING CERTIFIED CORNER RECORDS**

Document No.	Date
<u>13794</u>	<u>7-1-81</u>
<u>6506</u>	<u>4-9-80</u>

The above documents are based on FDEP Bureau of Surveying and Mapping Record Information.

I hereby certify the monument and accessories shown above were field located on 6-2-08.

*Scott C. Whitaker*  
**SCOTT C. WHITAKER**  
 Professional Surveyor and Mapper  
 Florida Certificate No. 4324  
 Date Signed 7/2/08

BEAN, WHITAKER, LUTZ & KAREH, INC. (LB 4919)  
 13041 McGregor Boulevard  
 Fort Myers, Florida 33919-5910  
 Phone: (239) 481-1331

POINT NO. 14051

BLM REFERENCE NO. T46SR26E700600