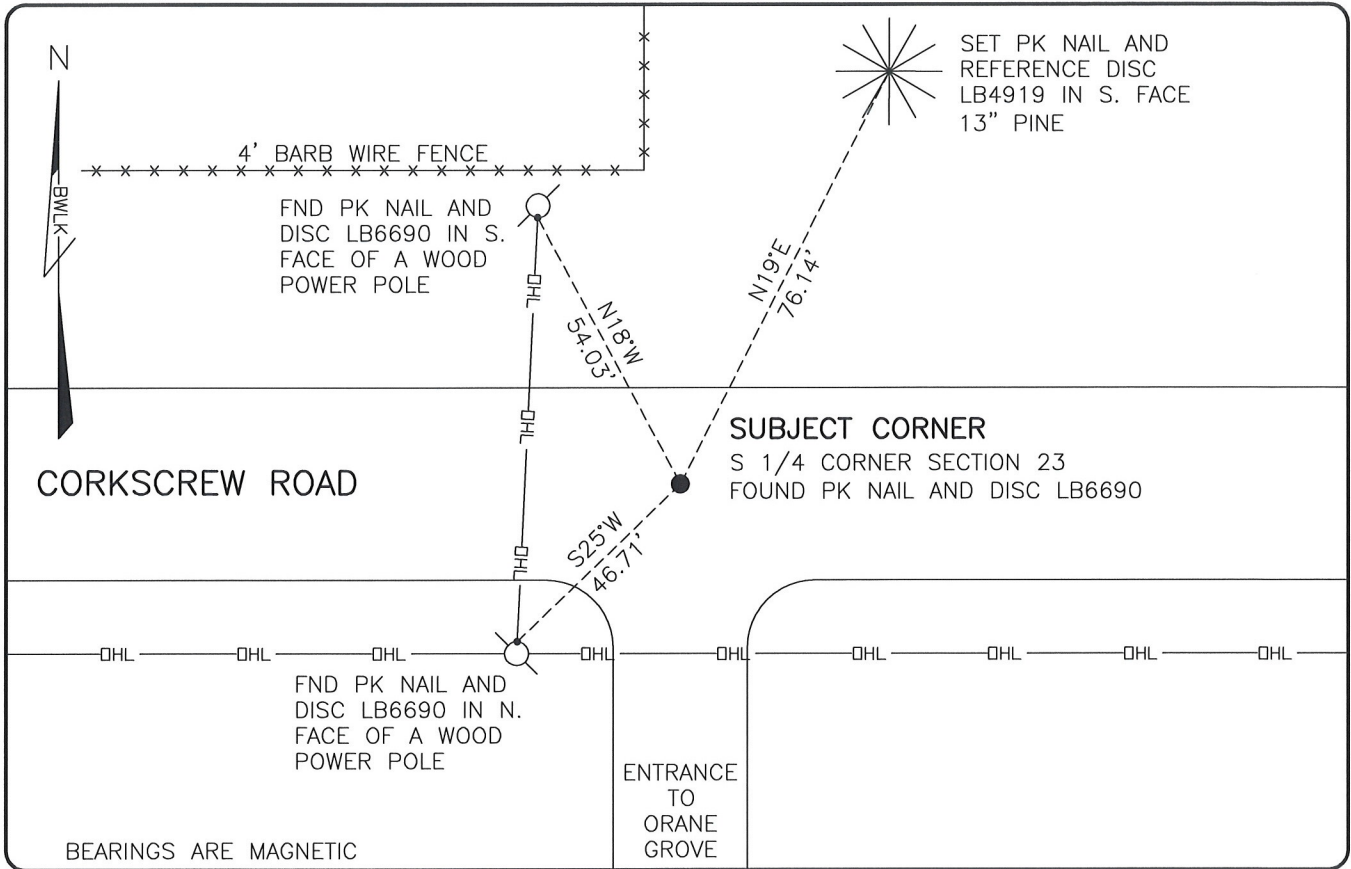


**LAND CORNER RECORD**

**PUBLIC WORKS  
LEE COUNTY, FLORIDA**

Address - 1500 Monroe St., Ft. Myers, Fla. 33901

Phone : (239) 479-8900

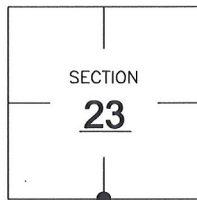


**COMMENTS:**

SUBJECT CORNER IN HARMONY WITH HISTORICAL RECORDS.

**CORNER DESCRIPTION**

S 1/4 Corner  
 Section 23  
 Township 46  
 Range 26



**HORIZONTAL POSITION INFORMATION**

Florida West Zone, NAD 1983(2007 Adjustment)

Northing(ft) 769393.47 Easting(ft) 759547.75

Latitude 26°27'00.1569" Longitude 81°41'02.5193"

Scale Factor 0.99995

**EXISTING CERTIFIED CORNER RECORDS**

Document No.	Date

The above documents are based on FDEP Bureau of Surveying and Mapping Record Information.

I hereby certify the monument and accessories shown above were field located on 5-7-08.

*Scott C. Whitaker*

**SCOTT C. WHITAKER**  
 Professional Surveyor and Mapper  
 Florida Certificate No. 4324  
 Date Signed 6/5/08

BEAN, WHITAKER, LUTZ & KAREH, INC. (LB 4919)  
 13041 McGregor Boulevard  
 Fort Myers, Florida 33919-5910  
 Phone: (239) 481-1331

POINT NO. 14040

BLM REFERENCE NO. T46SR26E540300