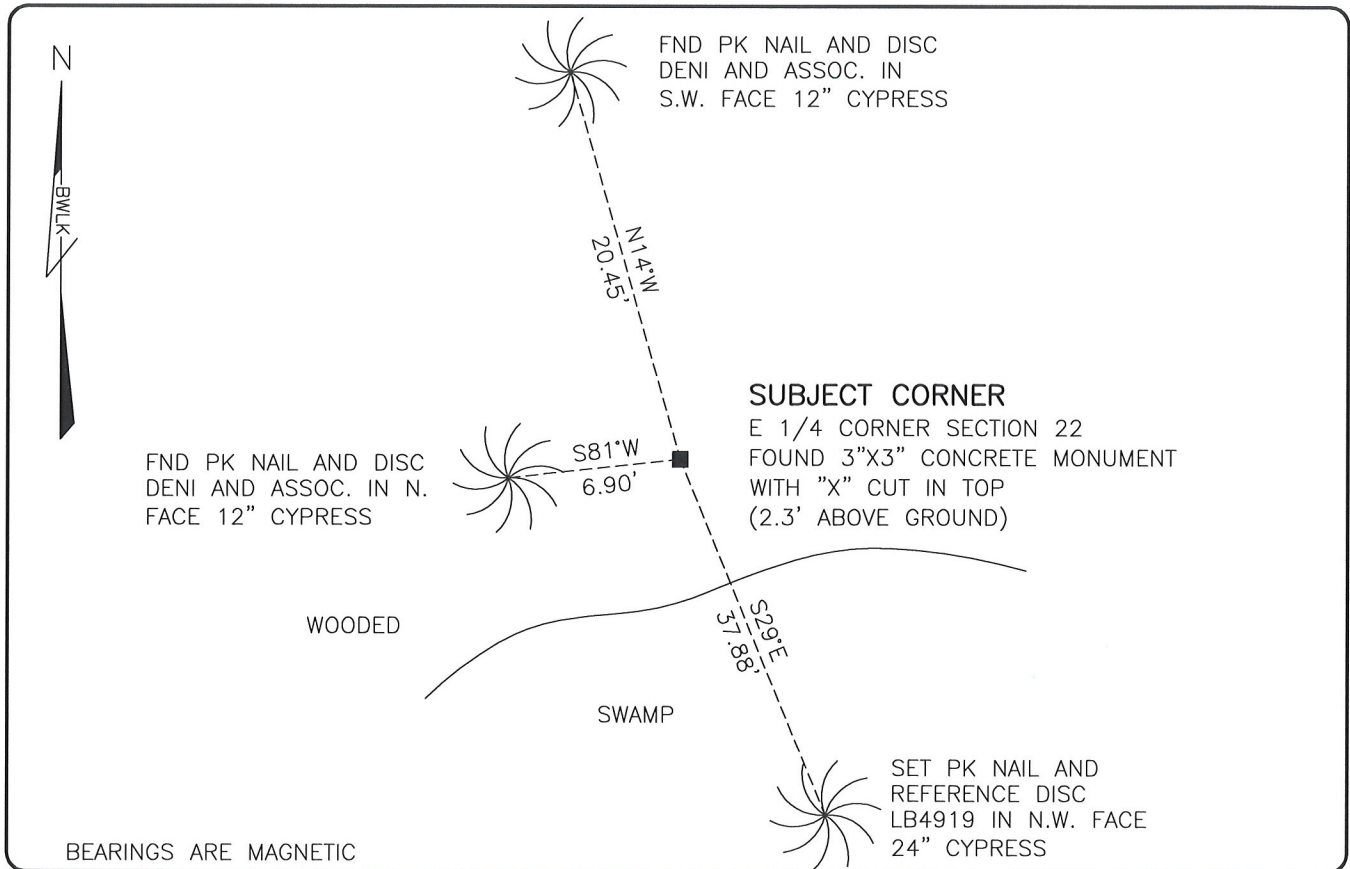


LAND CORNER RECORD

**PUBLIC WORKS
LEE COUNTY, FLORIDA**

Address - 1500 Monroe St., Ft. Myers, Fla. 33901

Phone : (239) 479-8900

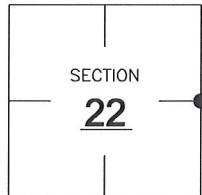


COMMENTS:

FOUND SUBJECT CORNER IN HARMONY CCR 68493. TIES TO THE TWO REFERENCES LEFT DIFFER BY ONE FOOT +/- . SET AN ADDITIONAL REFERENCE.

CORNER DESCRIPTION

E 1/4 Corner
Section 22
Township 46
Range 26



HORIZONTAL POSITION INFORMATION

Florida West Zone, NAD 1983(2007 Adjustment)

Northing(ft) 772005.93 Easting(ft) 756846.01

Latitude 26°27'26.0961" Longitude 81°41'32.1768"

Scale Factor 0.99995

EXISTING CERTIFIED CORNER RECORDS

Document No.	Date
<u>68493</u>	<u>7-21-00</u>
<u>13806</u>	<u>12-5-81</u>
_____	_____
_____	_____
_____	_____

The above documents are based on FDEP Bureau of Surveying and Mapping Record Information.

I hereby certify the monument and accessories shown above were field located on 3-26-08.

Scott C. Whitaker
SCOTT C. WHITAKER
Professional Surveyor and Mapper
Florida Certificate No. 4324
Date Signed 5/30/08

BEAN, WHITAKER, LUTZ & KAREH, INC. (LB 4919)
13041 McGregor Boulevard
Fort Myers, Florida 33919-5910
Phone: (239) 481-1331

POINT NO. 14022

BLM REFERENCE NO. T46SR26E500340