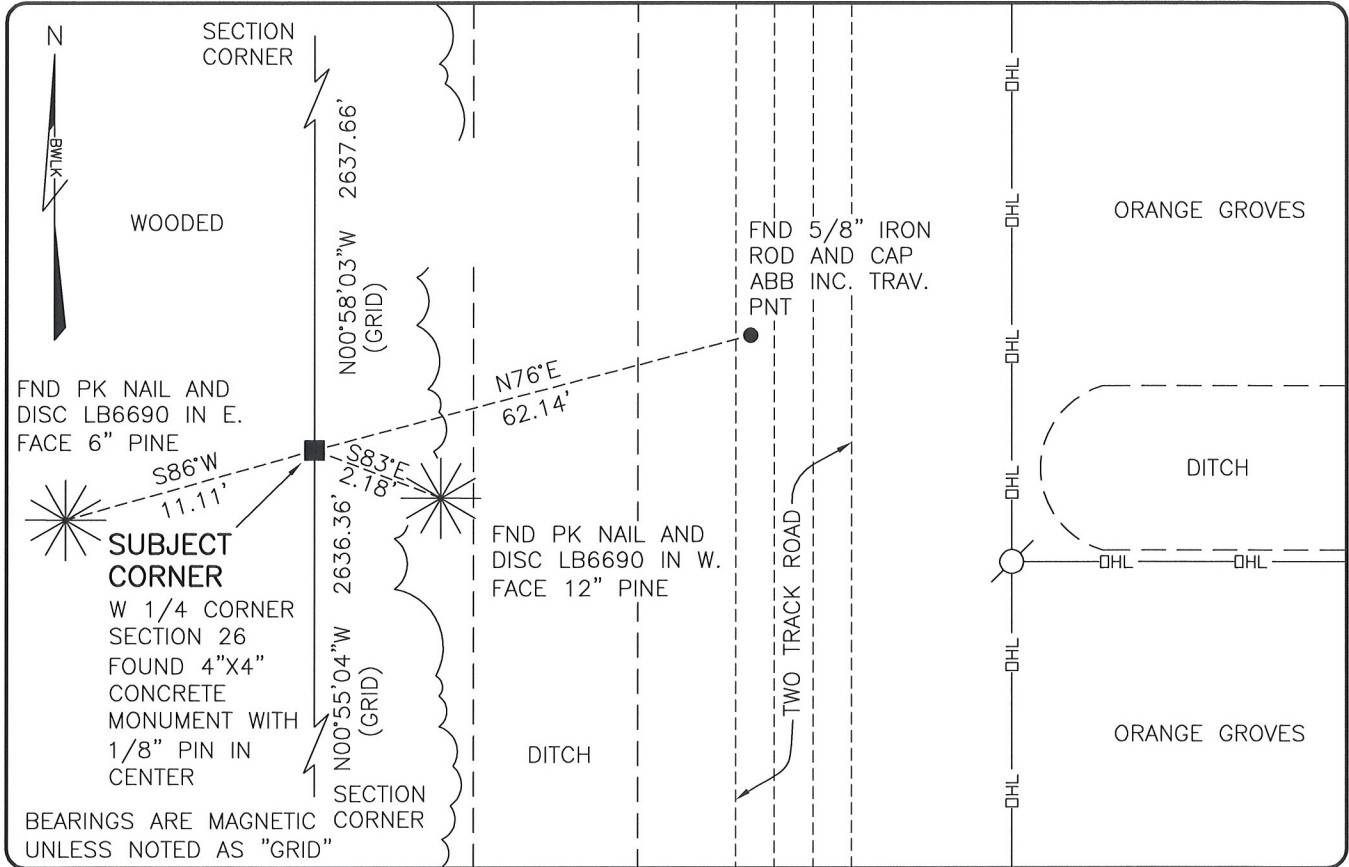


LAND CORNER RECORD

**PUBLIC WORKS
LEE COUNTY, FLORIDA**

Address - 1500 Monroe St., Ft. Myers, Fla. 33901

Phone : (239) 479-8900

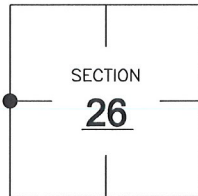


COMMENTS:

NO CCR'S WERE ON FILE ALTHOUGH THERE WERE EXISTING REFERENCES IN THE VICINITY OF THIS CORNER. MONUMENT APPEARS TO HAVE BEEN HELD AS 1/4 CORNER. NO OTHER AVAILABLE EVIDENCE.

CORNER DESCRIPTION

W 1/4 Corner
Section 26
Township 46
Range 26



HORIZONTAL POSITION INFORMATION

Florida West Zone, NAD 1983(2007 Adjustment)

Northing(ft) 766732.38 Easting(ft) 756934.32

Latitude 26°26'33.8639" Longitude 81°41'31.3440"

Scale Factor 0.99995

EXISTING CERTIFIED CORNER RECORDS

Document No.	Date

The above documents are based on FDEP Bureau of Surveying and Mapping Record Information.

I hereby certify the monument and accessories shown above were field located on 6-4-08

Scott C. Whitaker
SCOTT C. WHITAKER
Professional Surveyor and Mapper
Florida Certificate No. 4324
Date Signed 7/2/08

BEAN, WHITAKER, LUTZ & KAREH, INC. (LB 4919)
13041 McGregor Boulevard
Fort Myers, Florida 33919-5910
Phone: (239) 481-1331

POINT NO. 14058

BLM REFERENCE NO. T46SR26E500240