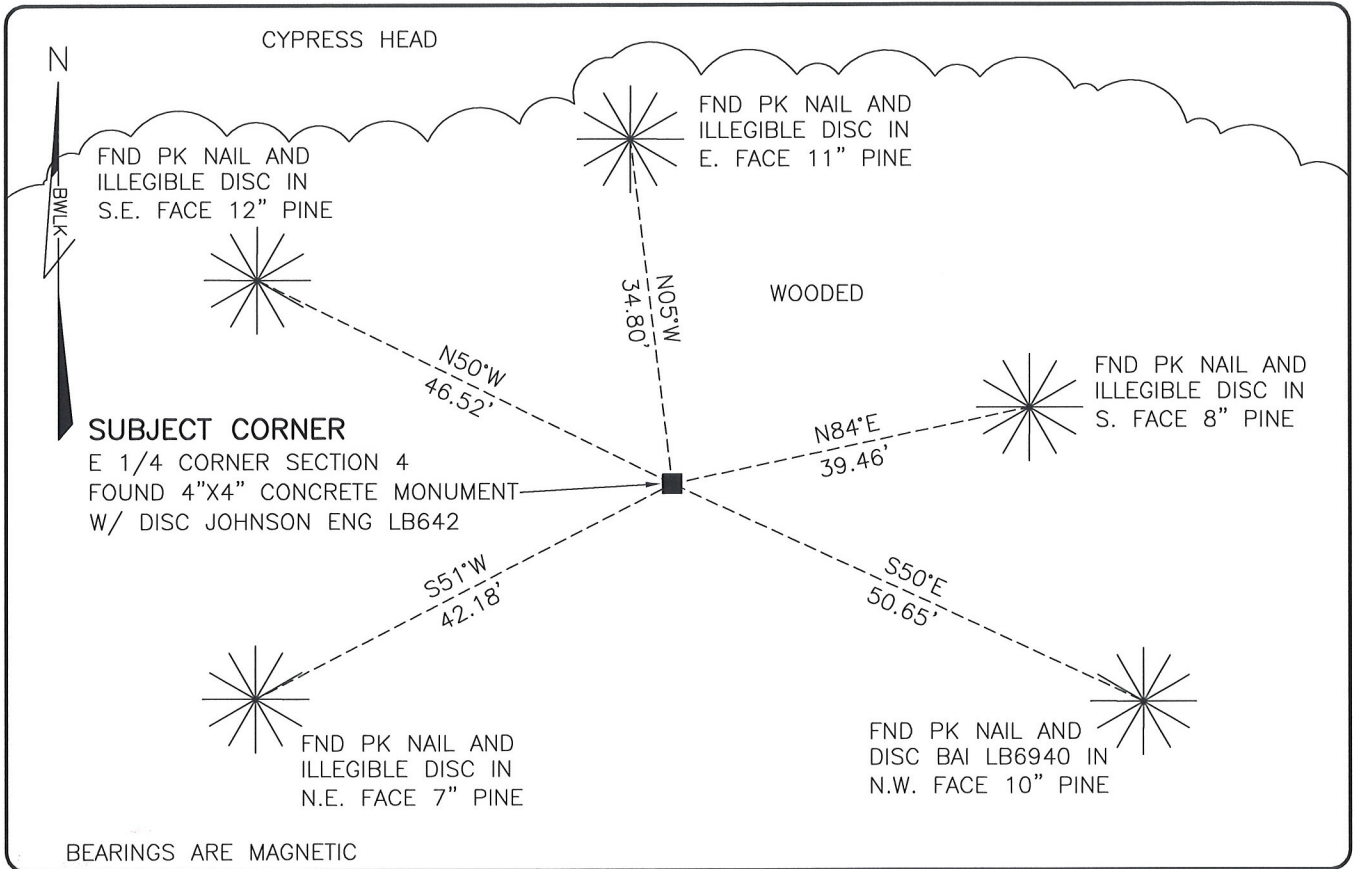


LAND CORNER RECORD

**PUBLIC WORKS
LEE COUNTY, FLORIDA**

Address - 1500 Monroe St., Ft. Myers, Fla. 33901

Phone : (239) 479-8900

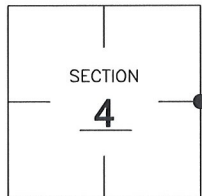


COMMENTS:

FOUND SUBJECT CORNER IN HARMONY WITH HISTORICAL RECORDS AND CCR 41721. THERE IS AN APPROXIMATE 1320' EXCESS IN THE NORTHERN TIER OF THIS TOWNSHIP. THE EXISTING EAST AND WEST 1/4 CORNERS ARE VERY CLOSE TO PROPORTIONATE MEASURE IN THIS SECTION.

CORNER DESCRIPTION

E 1/4 Corner
Section 4
Township 46
Range 26



HORIZONTAL POSITION INFORMATION

Florida West Zone, NAD 1983(2007 Adjustment)

Northing(ft) 788548.77 Easting(ft) 751260.99

Latitude 26°30'10.0672" Longitude 81°42'33.2190"

Scale Factor 0.99995

EXISTING CERTIFIED CORNER RECORDS

Document No.	Date
<u>41721</u>	<u>9-20-91</u>

The above documents are based on FDEP Bureau of Surveying and Mapping Record Information.

I hereby certify the monument and accessories shown above were field located on 5-8-08

Scott C. Whitaker

SCOTT C. WHITAKER
Professional Surveyor and Mapper
Florida Certificate No. 4324
Date Signed 6/5/08

BEAN, WHITAKER, LUTZ & KAREH, INC. (LB 4919)
13041 McGregor Boulevard
Fort Myers, Florida 33919-5910
Phone: (239) 481-1331

POINT NO. 14044

BLM REFERENCE NO. T46SR26E400640