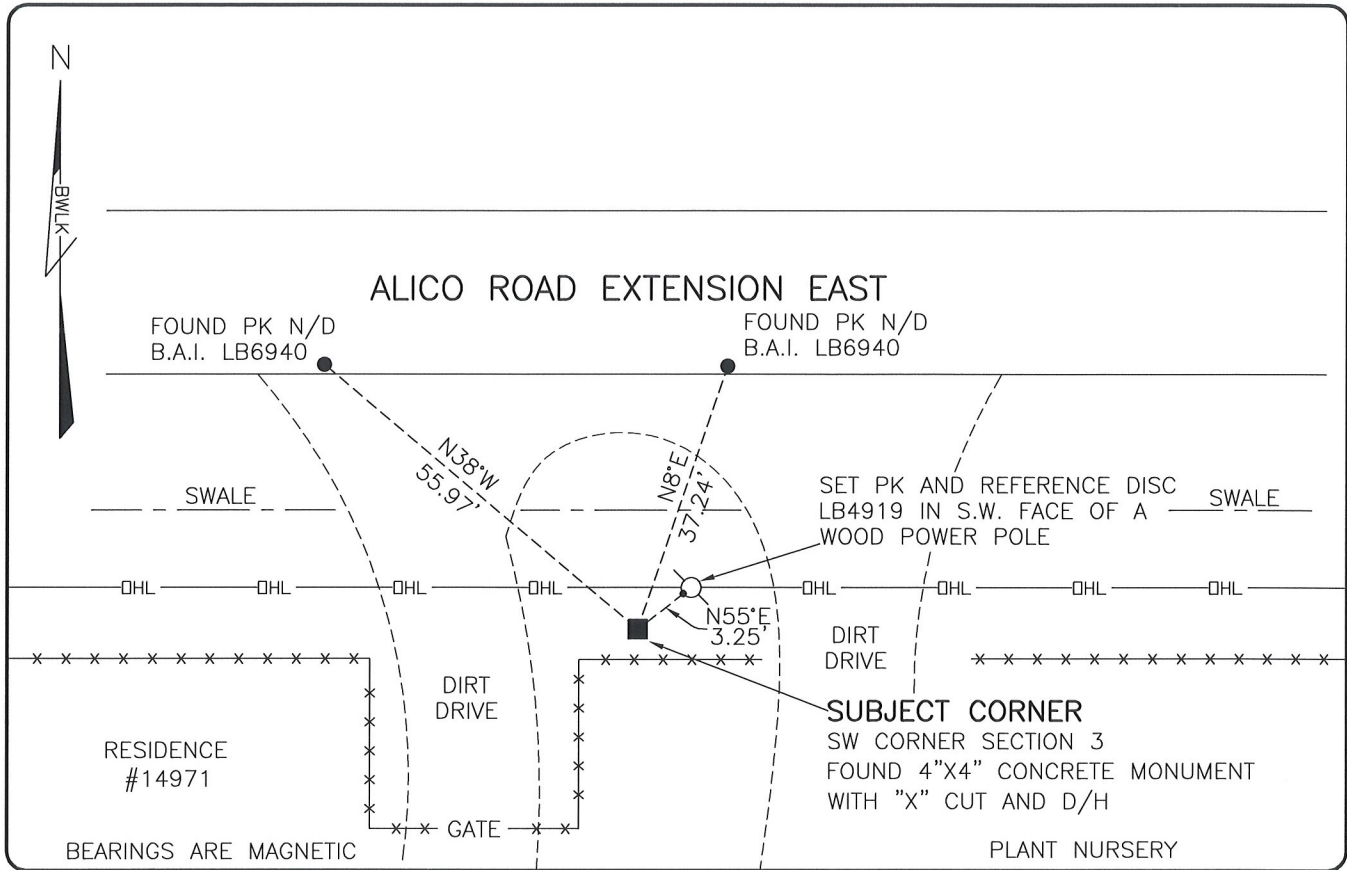


LAND CORNER RECORD

**PUBLIC WORKS
LEE COUNTY, FLORIDA**

Address - 1500 Monroe St., Ft. Myers, Fla. 33901 Phone : (239) 479-8900

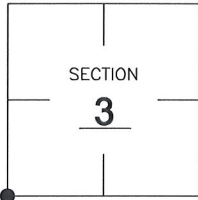


COMMENTS:

FOUND SUBJECT CORNER IN HARMONY WITH CCR 41722. FOUND TWO REFERENCES AND SET AN ADDITIONAL REFERENCE.

CORNER DESCRIPTION

SW Corner
Section **3**
Township **46**
Range **26**



HORIZONTAL POSITION INFORMATION

Florida West Zone, NAD 1983(2007 Adjustment)
Northing(ft) **785311.58** Easting(ft) **751335.55**
Latitude **26°29'38.0041"** Longitude **81°42'32.4790"**
Scale Factor **0.99995**

EXISTING CERTIFIED CORNER RECORDS

Document No.	Date
41722	2-10-92
34020	11-9-89

The above documents are based on FDEP Bureau of Surveying and Mapping Record Information.

I hereby certify the monument and accessories shown above were field located on **3-20-08**.

Scott C. Whitaker
SCOTT C. WHITAKER
Professional Surveyor and Mapper
Florida Certificate No. **4324**
Date Signed **5/30/08**

BEAN, WHITAKER, LUTZ & KAREH, INC. (LB 4919)
13041 McGregor Boulevard
Fort Myers, Florida 33919-5910
Phone: (239) 481-1331

POINT NO. 14014

BLM REFERENCE NO. T46SR26E400600