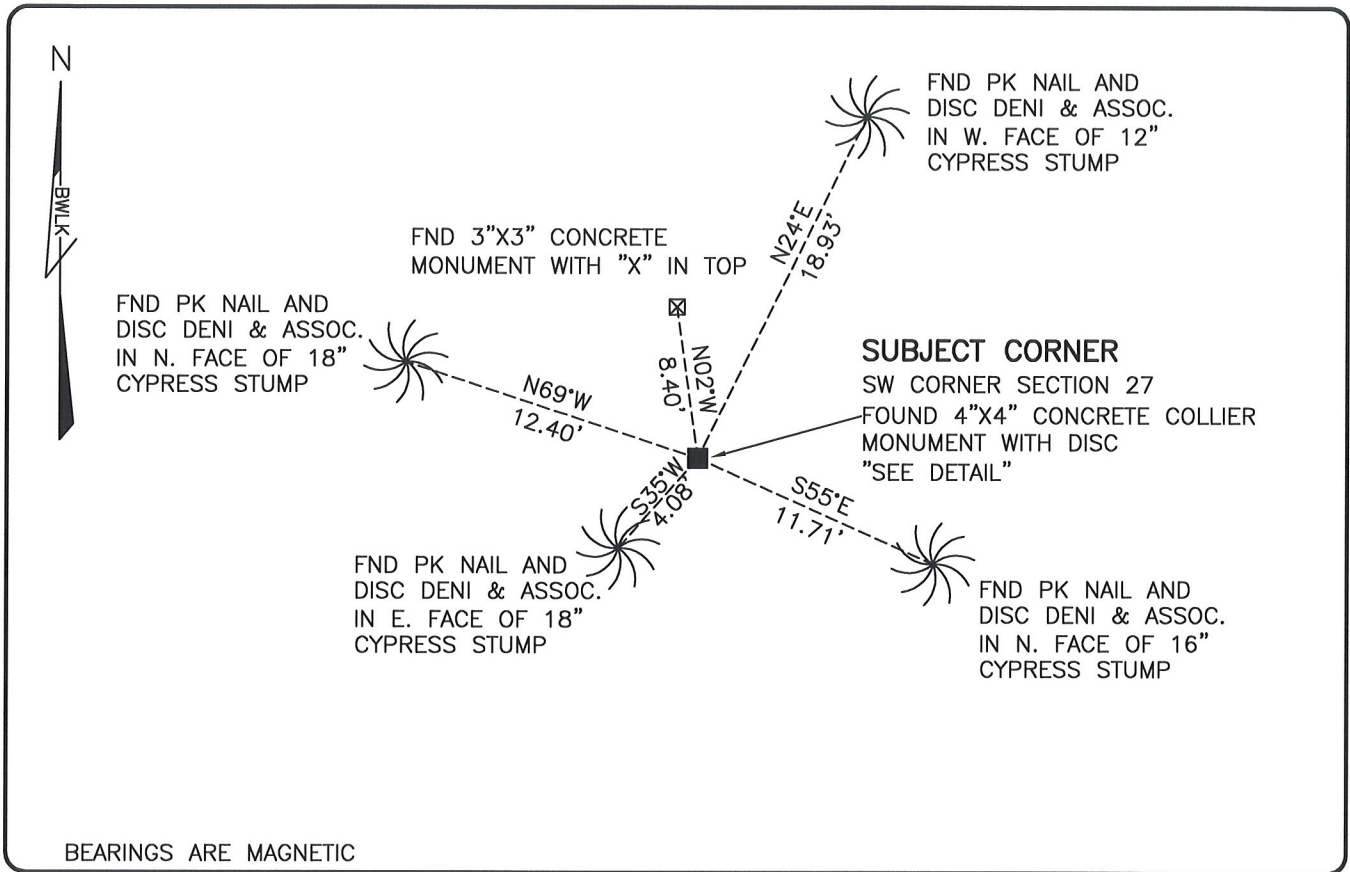


**LAND CORNER RECORD**

**PUBLIC WORKS  
LEE COUNTY, FLORIDA**

Address - 1500 Monroe St., Ft. Myers, Fla. 33901

Phone : (239) 479-8900



BEARINGS ARE MAGNETIC

**COMMENTS:**

FOUND SUBJECT CORNER AND REFERENCES IN HARMONY WITH CCR 68498 AND THE RECORD PLAT OF CORKSCREW WOODS INSTRUMENT NUMBER 2007000289772.

**CORNER DESCRIPTION**

SW Corner	SECTION <b>27</b>
Section <b>27</b>	
Township <b>46</b>	
Range <b>26</b>	

**HORIZONTAL POSITION INFORMATION**

Florida West Zone, NAD 1983(2007 Adjustment)  
 Northing(ft) 764027.21 Easting(ft) 751703.51  
 Latitude 26°26'07.1921" Longitude 81°42'28.9608"  
 Scale Factor 0.99995

**EXISTING CERTIFIED CORNER RECORDS**

Document No.	Date
<u>68498</u>	<u>7-21-00</u>
<u>9361</u>	_____
_____	_____
_____	_____
_____	_____

The above documents are based on FDEP Bureau of Surveying and Mapping Record Information.

I hereby certify the monument and accessories shown above were field located on 3-25-08.

*Scott C. Whitaker*  
**SCOTT C. WHITAKER**  
 Professional Surveyor and Mapper  
 Florida Certificate No. 4324  
 Date Signed 5/30/08

BEAN, WHITAKER, LUTZ & KAREH, INC. (LB 4919)  
 13041 McGregor Boulevard  
 Fort Myers, Florida 33919-5910  
 Phone: (239) 481-1331

POINT NO. 14018

BLM REFERENCE NO. T46SR26E400200