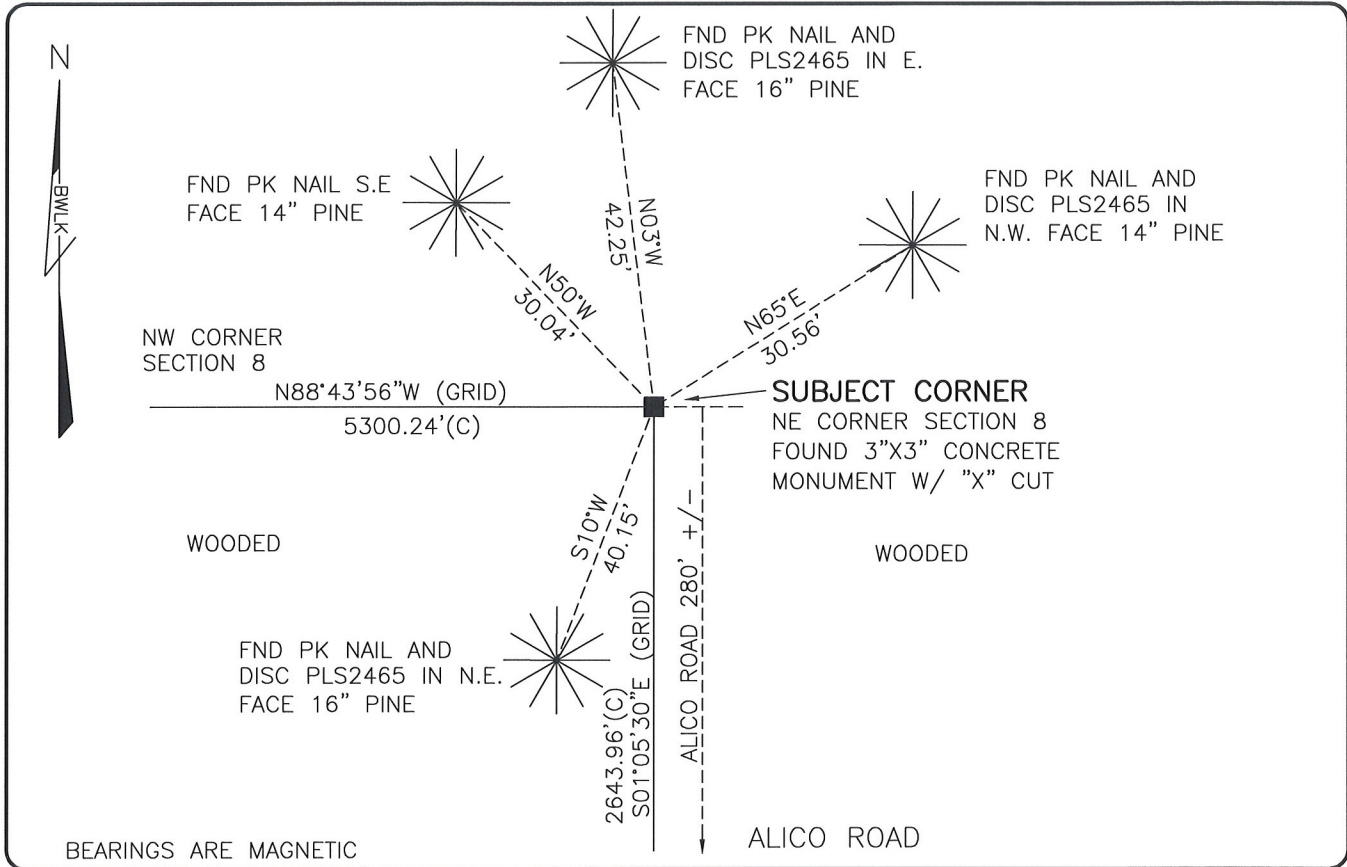


LAND CORNER RECORD

**PUBLIC WORKS
LEE COUNTY, FLORIDA**

Address - 1500 Monroe St., Ft. Myers, Fla. 33901

Phone : (239) 479-8900



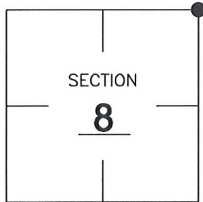
BEARINGS ARE MAGNETIC

COMMENTS:

FOUND SUBJECT CORNER IN HARMONY WITH CCR 71401 AND CCR 41719. THE CCR 71400 FILED FOR THE NW CORNER OF SECTION 8 WAS DETERMINED/VERIFIED TO BE INCORRECT AFTER DISCUSSIONS WITH THE SIGNING SURVEYOR.

CORNER DESCRIPTION

NE Corner
Section 8
Township 46
Range 26



HORIZONTAL POSITION INFORMATION

Florida West Zone, NAD 1983(2007 Adjustment)
Northing(ft) 785429.03 Easting(ft) 746032.25
Latitude 26°29'39.2830" Longitude 81°43'30.8489"
Scale Factor 0.99995

EXISTING CERTIFIED CORNER RECORDS

Document No.	Date
<u>71401</u>	<u>1-29-01</u>
<u>41719</u>	<u>1-21-92</u>

The above documents are based on FDEP Bureau of Surveying and Mapping Record Information.

I hereby certify the monument and accessories shown above were field located on 5-5-08.

Scott C. Whitaker
SCOTT C. WHITAKER
Professional Surveyor and Mapper
Florida Certificate No. 4324
Date Signed 6/4/08
BEAN, WHITAKER, LUTZ & KAREH, INC. (LB 4919)
13041 McGregor Boulevard
Fort Myers, Florida 33919-5910
Phone: (239) 481-1331

POINT NO. 14037

BLM REFERENCE NO. T46SR26E300600