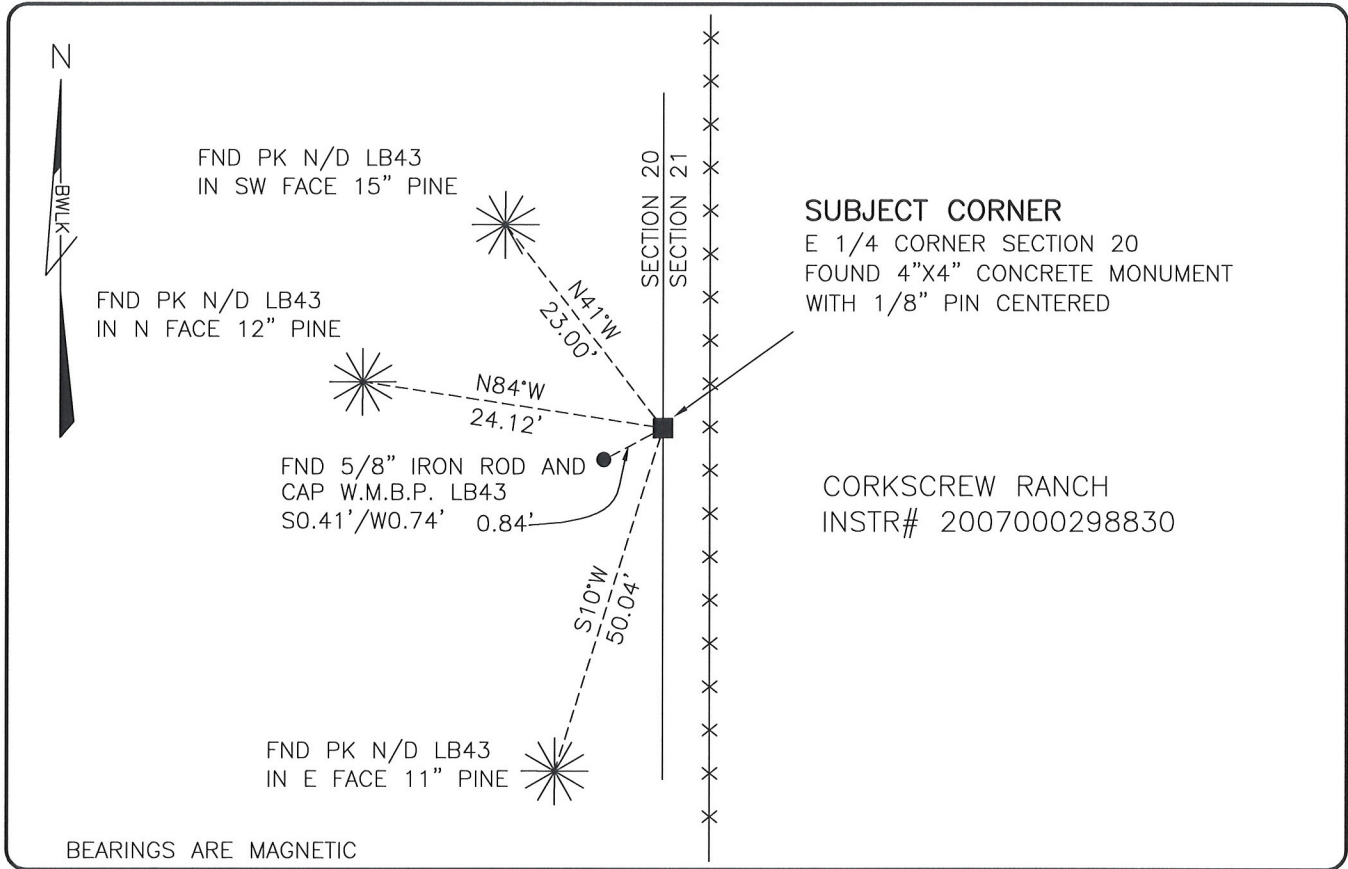


LAND CORNER RECORD

**PUBLIC WORKS
LEE COUNTY, FLORIDA**

Address - 1500 Monroe St., Ft. Myers, Fla. 33901

Phone : (239) 479-8900



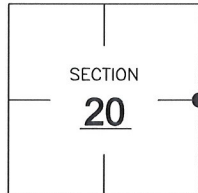
BEARINGS ARE MAGNETIC

COMMENTS:

CCR 67555 CALLS FOR A "SET IR LB43" WHICH NOW LIES 0.84' WEST OF A FND CONCRETE MONUMENT (CCR 13803). THE CONCRETE MONUMENT HAS BEEN IN PLACE FOR AT LEAST 20 YEARS AND IS IN HARMONY WITH HISTORICAL RECORDS OF THIS FIRM AND THE RECORD PLAT OF CORKSCREW RANCH.

CORNER DESCRIPTION

E 1/4 Corner
Section 20
Township 46
Range 26



HORIZONTAL POSITION INFORMATION

Florida West Zone, NAD 1983(2007 Adjustment)
Northing(ft) 771892.36 Easting(ft) 746274.05
Latitude 26°27'25.2086" Longitude 81°43'28.5067"
Scale Factor 0.99995

EXISTING CERTIFIED CORNER RECORDS

Document No.	Date
<u>67555</u>	<u>2-23-00</u>
<u>13803</u>	<u>12-4-81</u>

The above documents are based on FDEP Bureau of Surveying and Mapping Record Information.

I hereby certify the monument and accessories shown above were field located on 3-18-08.

Scott C. Whitaker
SCOTT C. WHITAKER
Professional Surveyor and Mapper
Florida Certificate No. 4324
Date Signed 5/30/08

BEAN, WHITAKER, LUTZ & KAREH, INC. (LB 4919)
13041 McGregor Boulevard
Fort Myers, Florida 33919-5910
Phone: (239) 481-1331

POINT NO. 14009

BLM REFERENCE NO. T46SR26E300340