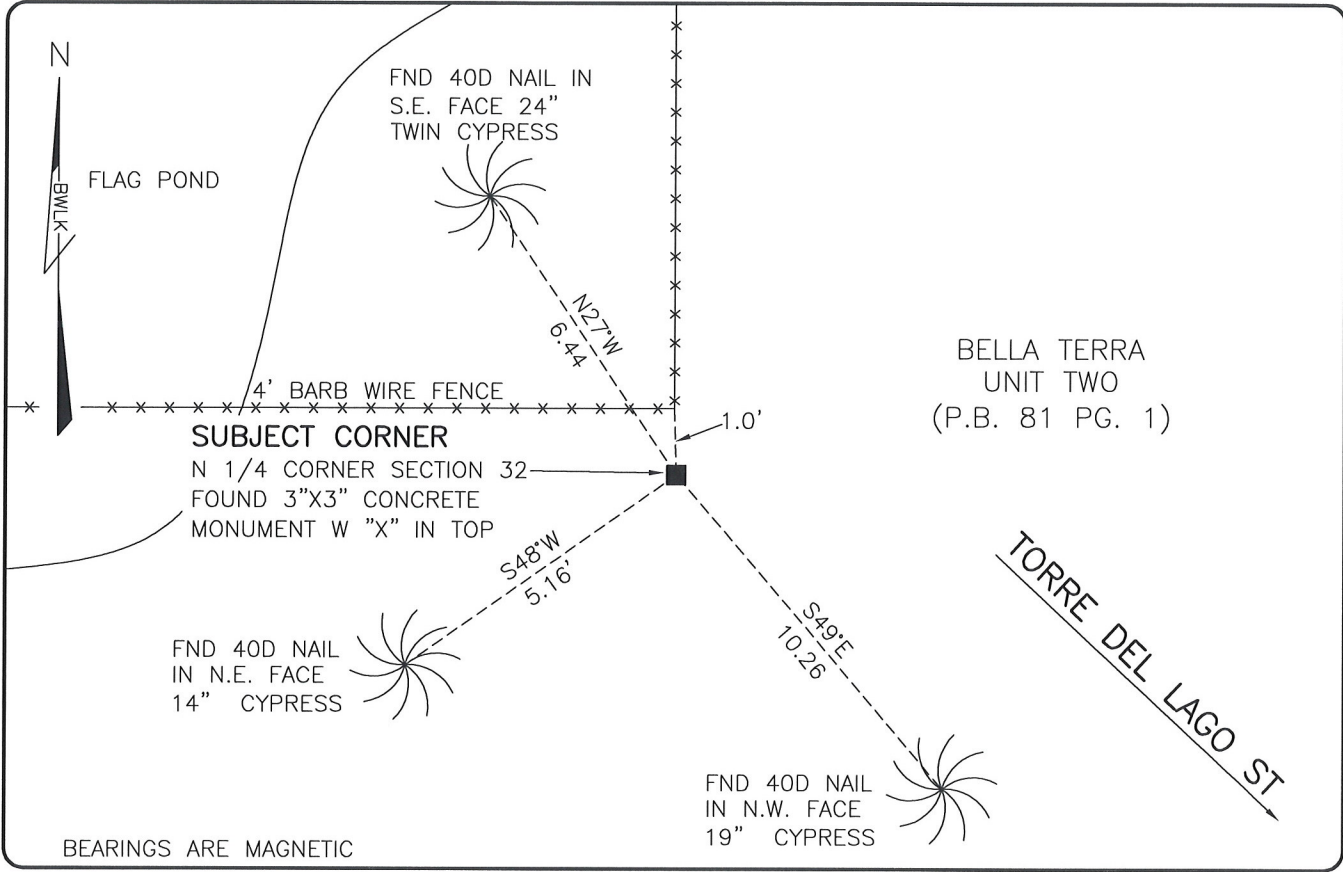


**LAND CORNER RECORD**

**PUBLIC WORKS  
LEE COUNTY, FLORIDA**

Address - 1500 Monroe St., Ft. Myers, Fla. 33901

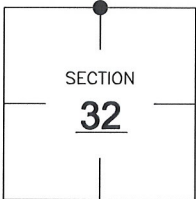
Phone : (239) 479-8900



**COMMENTS:**  
FOUND SUBJECT CORNER IN HARMONY WITH CCR 20590 AND THE RECORD PLAT OF BELLA TERRA UNIT TWO (P.B.81 PG.1).

**CORNER DESCRIPTION**

N 1/4 Corner  
Section 32  
Township 46  
Range 26



**HORIZONTAL POSITION INFORMATION**

Florida West Zone, NAD 1983(2007 Adjustment)  
Northing(ft) 763943.27 Easting(ft) 743793.06  
Latitude 26°26'06.5311" Longitude 81°43'55.9880"  
Scale Factor 0.99995

**EXISTING CERTIFIED CORNER RECORDS**

Document No.	Date
<u>20590</u>	<u>1-24-85</u>
_____	_____
_____	_____
_____	_____
_____	_____

The above documents are based on FDEP Bureau of Surveying and Mapping Record Information.

I hereby certify the monument and accessories shown above were field located on 4-22-08.

*Scott C. Whitaker*  
**SCOTT C. WHITAKER**  
Professional Surveyor and Mapper  
Florida Certificate No. 4324  
Date Signed 6/14/08

BEAN, WHITAKER, LUTZ & KAREH, INC. (LB 4919)  
13041 McGregor Boulevard  
Fort Myers, Florida 33919-5910  
Phone: (239) 481-1331

POINT NO. 14030

BLM REFERENCE NO. T46SR26E240200