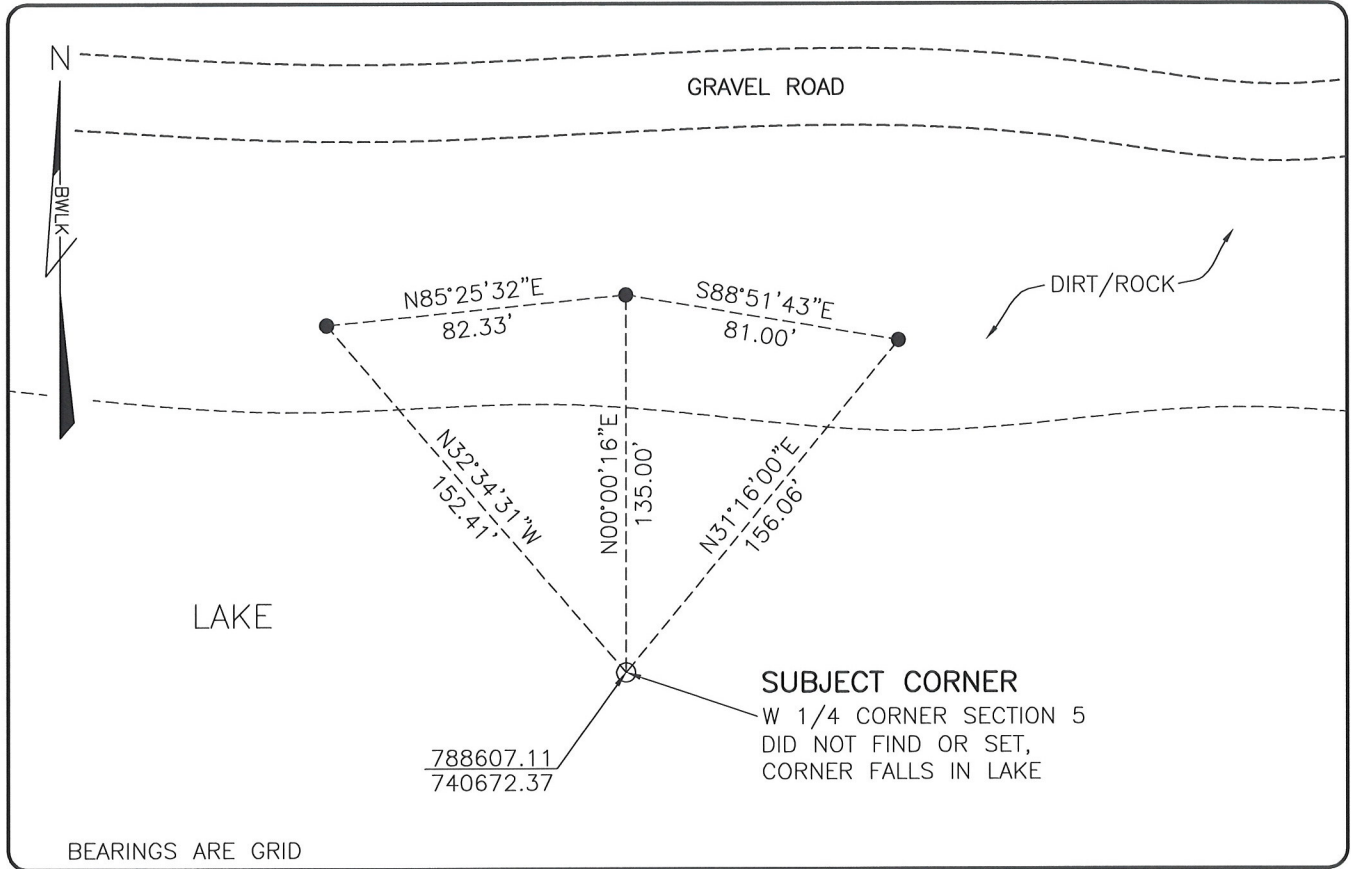


LAND CORNER RECORD

**PUBLIC WORKS
LEE COUNTY, FLORIDA**

Address - 1500 Monroe St., Ft. Myers, Fla. 33901

Phone : (239) 479-8900

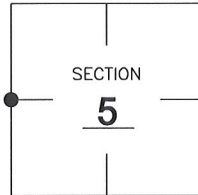


COMMENTS:

SUBJECT CORNER FALLS IN LAKE. DID NOT FIND OR SET. CALCULATED POSITION BASED ON HISTORICAL RECORDS INCLUDING A SURVEY RECORDED IN OR 4795 PAGE 2813.

CORNER DESCRIPTION

W 1/4 Corner
Section 5
Township 46
Range 26



HORIZONTAL POSITION INFORMATION

Florida West Zone, NAD 1983(2007 Adjustment)

Northing(ft) 788607.11 Easting(ft) 740672.37

Latitude 26°30'10.8694" Longitude 81°44'29.7743"

Scale Factor 0.99995

EXISTING CERTIFIED CORNER RECORDS

Document No.	Date
<u>41715</u>	<u>12-30-91</u>
_____	_____
_____	_____
_____	_____

The above documents are based on FDEP Bureau of Surveying and Mapping Record Information.

I hereby certify the monument and accessories shown above were field located on 7-23-08.

Scott C. Whitaker

SCOTT C. WHITAKER
Professional Surveyor and Mapper
Florida Certificate No. 4324
Date Signed 7/29/08

BEAN, WHITAKER, LUTZ & KAREH, INC. (LB 4919)
13041 McGregor Boulevard
Fort Myers, Florida 33919-5910
Phone: (239) 481-1331

POINT NO. 14090

BLM REFERENCE NO. T46SR26E200640