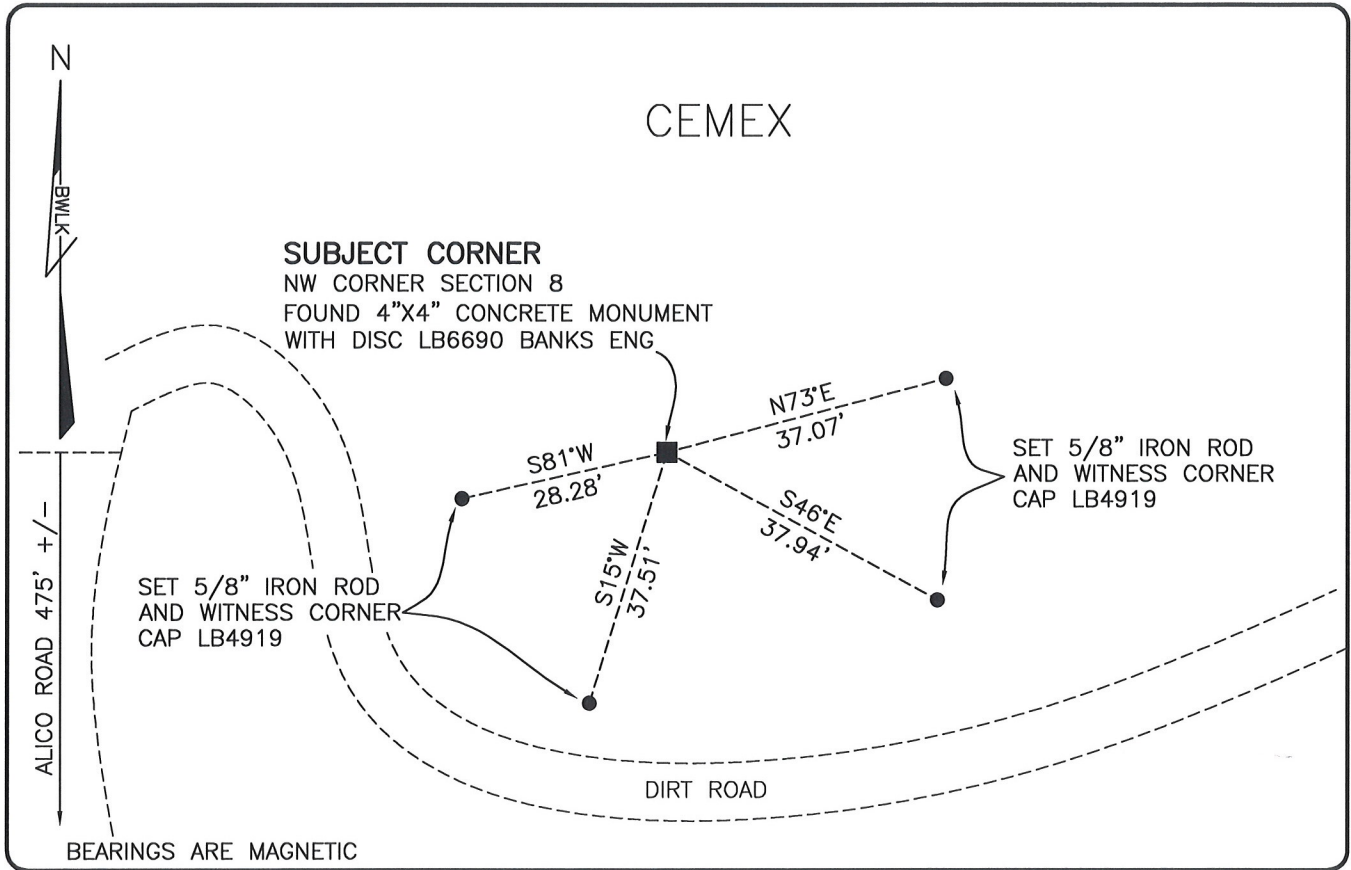


LAND CORNER RECORD

**PUBLIC WORKS
LEE COUNTY, FLORIDA**

Address - 1500 Monroe St., Ft. Myers, Fla. 33901

Phone : (239) 479-8900



COMMENTS:

FOUND SUBJECT CORNER IN HARMONY WITH CCR 41716. REFERENCES HAVE BEEN DESTROYED DUE TO MINING IN THIS AREA. SET FOUR NEW REFERENCES. THE CCR 71400 WAS DETERMINED/VERIFIED TO BE INCORRECT AFTER DISCUSSIONS WITH THE SIGNING SURVEYOR.

CORNER DESCRIPTION

NW Corner	SECTION 8
Section 8	
Township 46	
Range 26	

HORIZONTAL POSITION INFORMATION

Florida West Zone, NAD 1983(2007 Adjustment)
 Northing(ft) 785546.31 Easting(ft) 740733.31
 Latitude 26°29'40.5535" Longitude 81°44'29.1713"
 Scale Factor 0.99995

EXISTING CERTIFIED CORNER RECORDS

Document No.	Date
<u>71400</u>	<u>1-29-01</u>
<u>41716</u>	<u>12-30-91</u>

The above documents are based on FDEP Bureau of Surveying and Mapping Record Information.

I hereby certify the monument and accessories shown above were field located on 5-5-08.

Scott C. Whitaker
SCOTT C. WHITAKER
 Professional Surveyor and Mapper
 Florida Certificate No. 4324
 Date Signed 6/14/08

BEAN, WHITAKER, LUTZ & KAREH, INC. (LB 4919)
 13041 McGregor Boulevard
 Fort Myers, Florida 33919-5910
 Phone: (239) 481-1331

POINT NO. 14035

BLM REFERENCE NO. T46SR26E200600