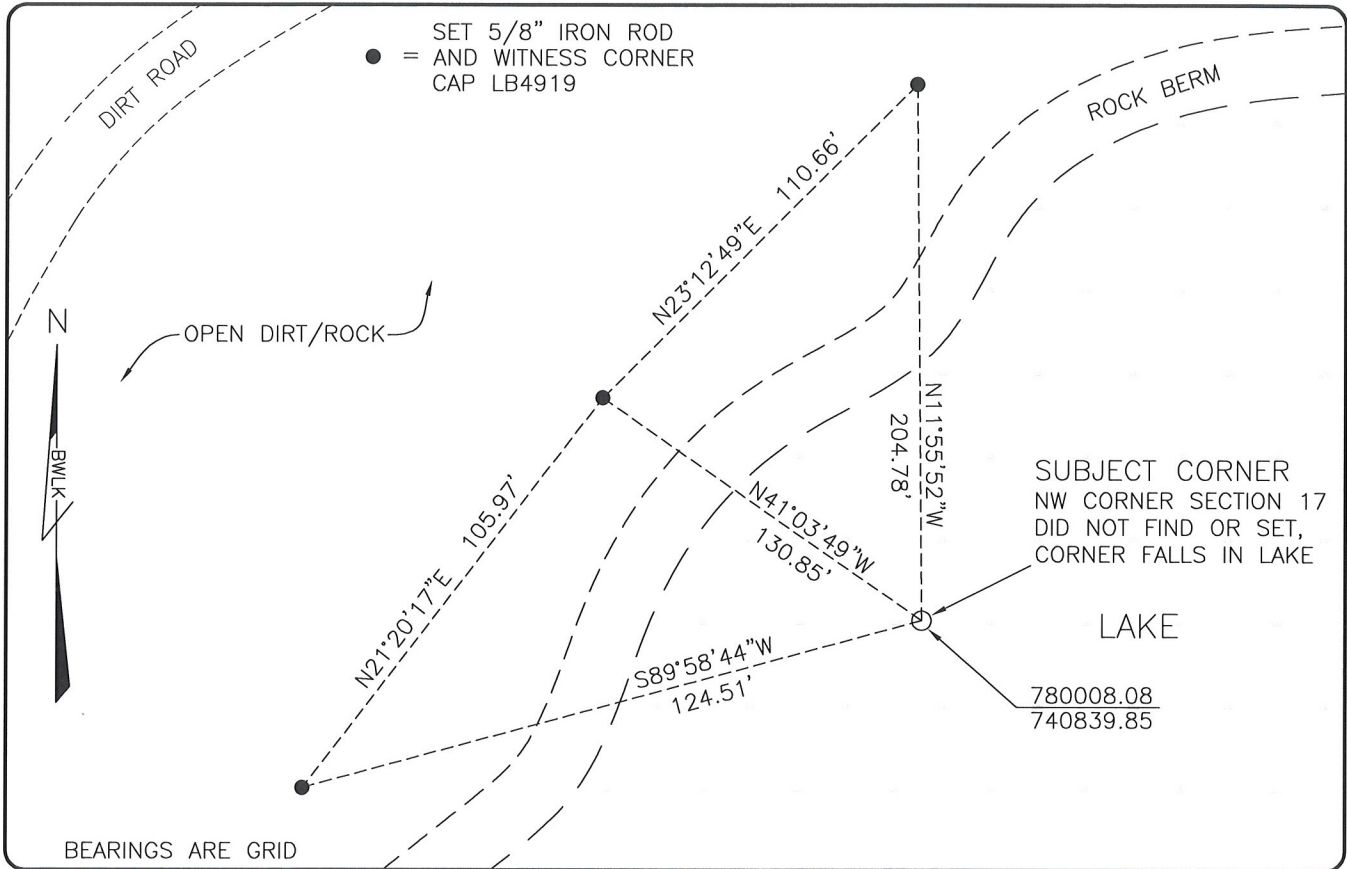


**LAND CORNER RECORD**

**PUBLIC WORKS  
LEE COUNTY, FLORIDA**

Address - 1500 Monroe St., Ft. Myers, Fla. 33901

Phone : (239) 479-8900

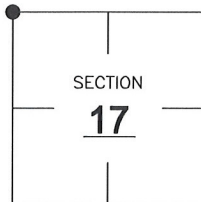


**COMMENTS:**

DID NOT FIND OR SET, CORNER FALLS IN LAKE. CALCULATED POSITION BASED ON HISTORICAL RECORDS INCLUDING A SURVEY RECORDED IN O.R.4795 PAGE 2813 AND TIES TO THE S.W. AND N.E. CORNERS OF SECTION 17.

**CORNER DESCRIPTION**

NW Corner  
Section 17  
Township 46  
Range 26



**HORIZONTAL POSITION INFORMATION**

Florida West Zone, NAD 1983(2007 Adjustment)

Northing(ft) 780008.08 Easting(ft) 740839.85

Latitude 26°28'45.6999" Longitude 81°44'28.1214"

Scale Factor 0.99995

**EXISTING CERTIFIED CORNER RECORDS**

| Document No. | Date           |
|--------------|----------------|
| <u>67540</u> | <u>2-23-00</u> |
|              |                |
|              |                |
|              |                |
|              |                |

The above documents are based on FDEP Bureau of Surveying and Mapping Record Information.

I hereby certify the monument and accessories shown above were field located on 6-20-08.

*Scott C. Whitaker*

**SCOTT C. WHITAKER**  
Professional Surveyor and Mapper  
Florida Certificate No. 4324  
Date Signed 7/25/08

BEAN, WHITAKER, LUTZ & KAREH, INC. (LB 4919)  
13041 McGregor Boulevard  
Fort Myers, Florida 33919-5910  
Phone: (239) 481-1331

POINT NO. 14075

BLM REFERENCE NO. T46SR26E200500