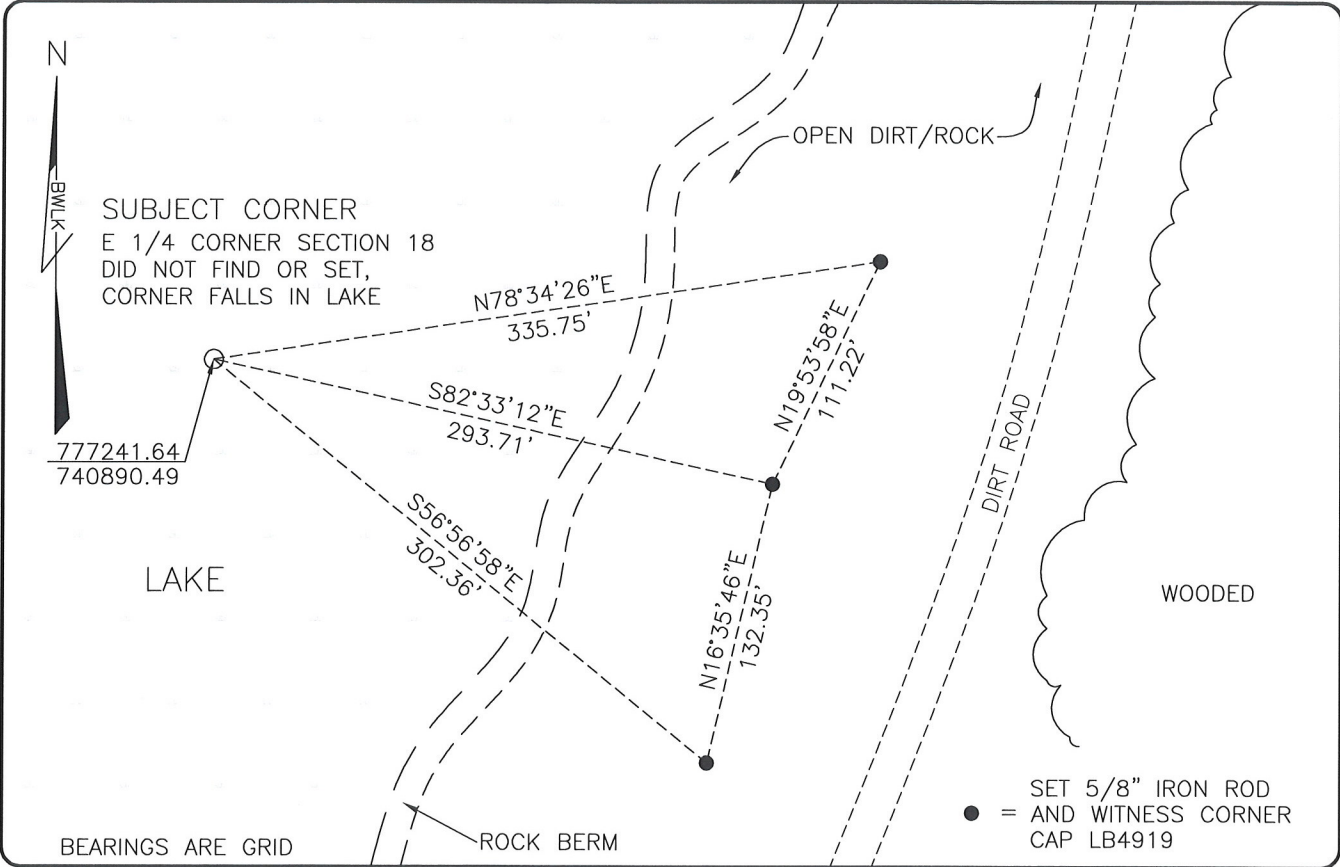


LAND CORNER RECORD

**PUBLIC WORKS
LEE COUNTY, FLORIDA**

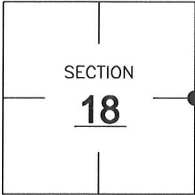
Address - 1500 Monroe St., Ft. Myers, Fla. 33901 Phone : (239) 479-8900



COMMENTS:
DID NOT FIND OR SET, CORNER FALLS IN LAKE. CALCULATED POSITION BASED ON HISTORICAL RECORDS INCLUDING A SURVEY RECORDED IN O.R.4795 PAGE 2813 AND TIES TO THE S.W. AND N.E. CORNERS OF SECTION 17.

CORNER DESCRIPTION

E 1/4 Corner
Section 18
Township 46
Range 26



HORIZONTAL POSITION INFORMATION

Florida West Zone, NAD 1983(2007 Adjustment)
Northing(ft) 777241.64 Easting(ft) 740890.49
Latitude 26°28'18.2997" Longitude 81°44'27.6255"
Scale Factor 0.99995

EXISTING CERTIFIED CORNER RECORDS

Document No.	Date

The above documents are based on FDEP Bureau of Surveying and Mapping Record Information.

I hereby certify the monument and accessories shown above were field located on 6-23-08.

Scott C. Whitaker
SCOTT C. WHITAKER
Professional Surveyor and Mapper
Florida Certificate No. 4324
Date Signed 7/25/08
BEAN, WHITAKER, LUTZ & KAREH, INC. (LB 4919)
13041 McGregor Boulevard
Fort Myers, Florida 33919-5910
Phone: (239) 481-1331

POINT NO. 14076

BLM REFERENCE NO. T46SR26E200440