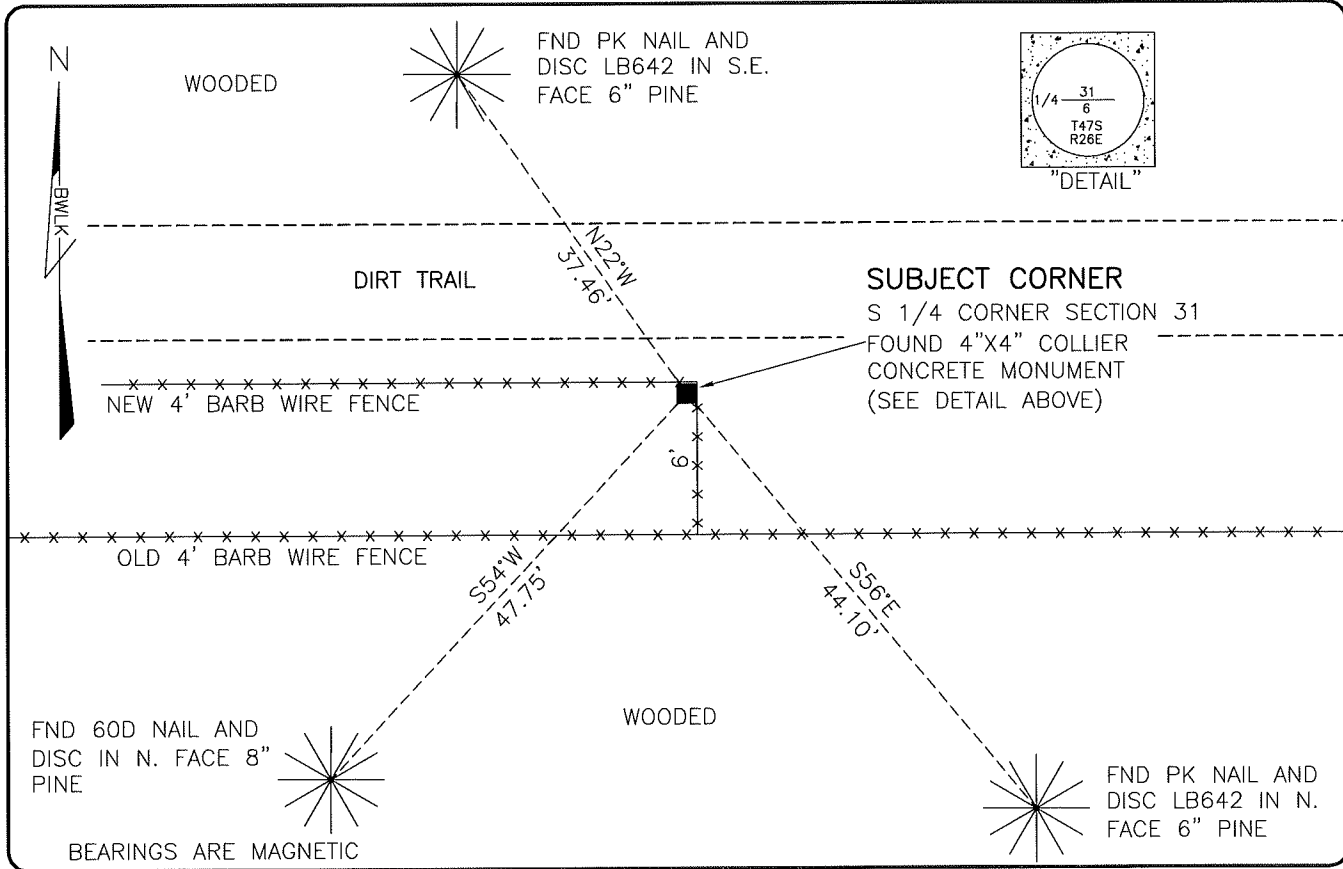


LAND CORNER RECORD

**PUBLIC WORKS
LEE COUNTY, FLORIDA**

Address – 1500 Monroe St., Ft. Myers, Fla. 33901

Phone : (239) 479-8900

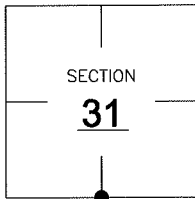


COMMENTS:

FOUND SUBJECT CORNER IN HARMONY WITH CCR 18665.

CORNER DESCRIPTION

S 1/4 Corner
Section 31
Township 46
Range 26



HORIZONTAL POSITION INFORMATION

Florida West Zone, NAD 1983(2007 Adjustment)
 Northing(ft) 758582.44 Easting(ft) 738576.03
 Latitude 26°25'13.5405" Longitude 81°44'53.4976"
 Scale Factor 0.99995

EXISTING CERTIFIED CORNER RECORDS

| Document No. | Date |
|--------------|----------------|
| 18665 | 3-30-84 |
| | |
| | |
| | |
| | |

The above documents are based on FDEP Bureau of Surveying and Mapping Record Information.

I hereby certify the monument and accessories shown above were field located on 6-3-08.

[Signature]
SCOTT C. WHITAKER
 Professional Surveyor and Mapper
 Florida Certificate No. 4324
 Date Signed 7/2/08

BEAN, WHITAKER, LUTZ & KAREH, INC. (LB 4919)
 13041 McGregor Boulevard
 Fort Myers, Florida 33919-5910
 Phone: (239) 481-1331

POINT NO. 14054

BLM REFERENCE NO. T46SR26E140100