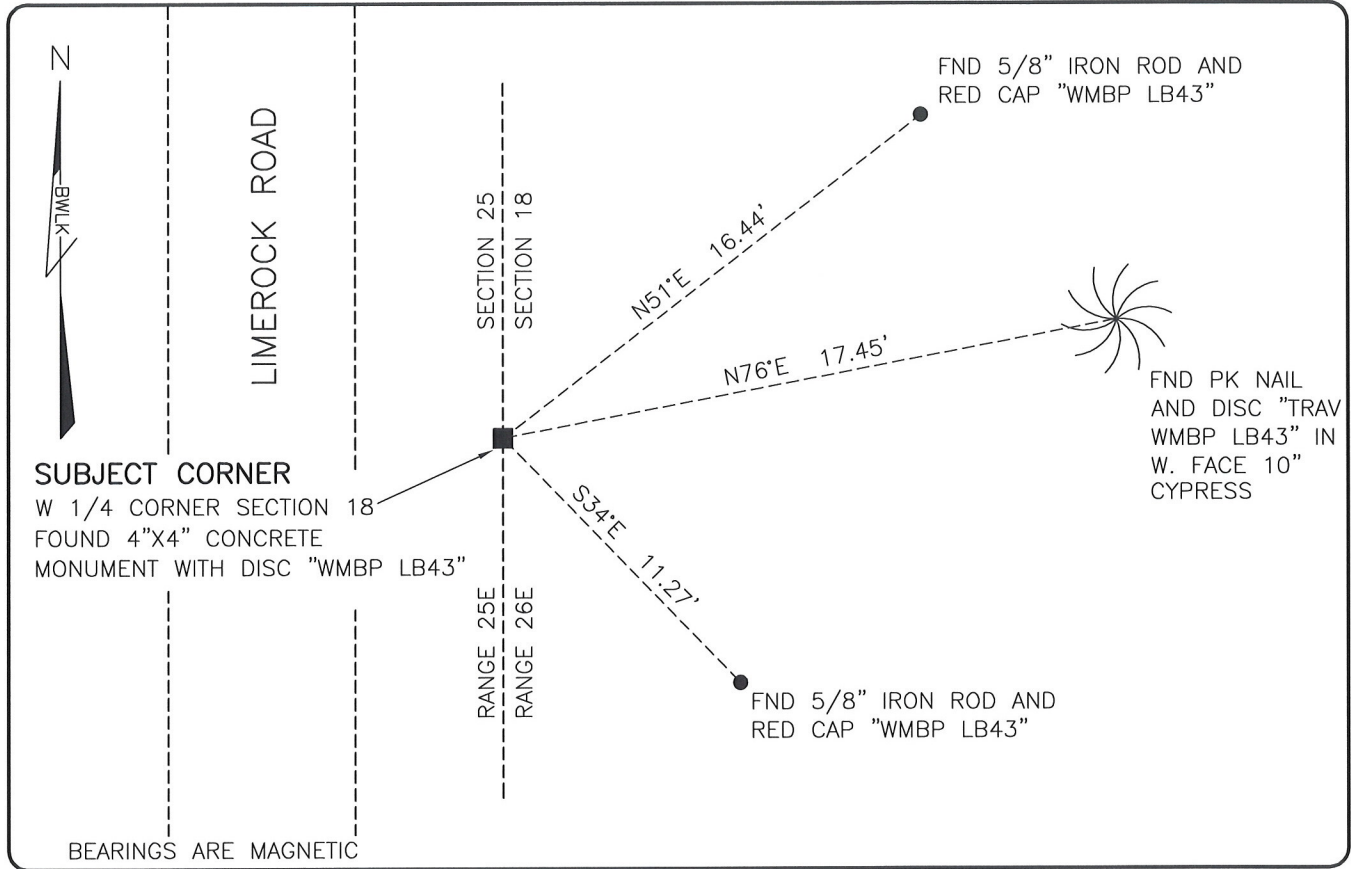


**LAND CORNER RECORD**

**PUBLIC WORKS  
LEE COUNTY, FLORIDA**

Address - 1500 Monroe St., Ft. Myers, Fla. 33901

Phone : (239) 479-8900



**COMMENTS:**

FOUND SUBJECT CORNER IN HARMONY WITH HISTORICAL RECORDS AND CCR 67546.

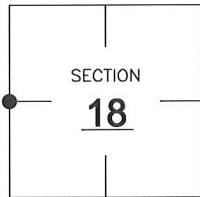
**CORNER DESCRIPTION**

**W 1/4** Corner

Section **18**

Township **46**

Range **26**



**HORIZONTAL POSITION INFORMATION**

Florida West Zone, NAD 1983(2007 Adjustment)

Northing(ft) **777229.18** Easting(ft) **735686.65**

Latitude **26°28'18.2769"** Longitude **81°45'24.8929"**

Scale Factor **0.99995**

**EXISTING CERTIFIED CORNER RECORDS**

Document No. **67546** Date **2-23-00**


The above documents are based on FDEP Bureau of Surveying and Mapping Record Information.

I hereby certify the monument and accessories shown above were field located on **6-20-08**.

*Suber Whitaker*

Professional Surveyor and Mapper

Florida Certificate No. **4324**

Date Signed **7/29/08**

BEAN, WHITAKER, LUTZ & KAREH, INC. (LB 4919)  
 13041 McGregor Boulevard  
 Fort Myers, Florida 33919-5910  
 Phone: (239) 481-1331

**POINT NO. 14079**

**BLM REFERENCE NO. T46SR26E100440**