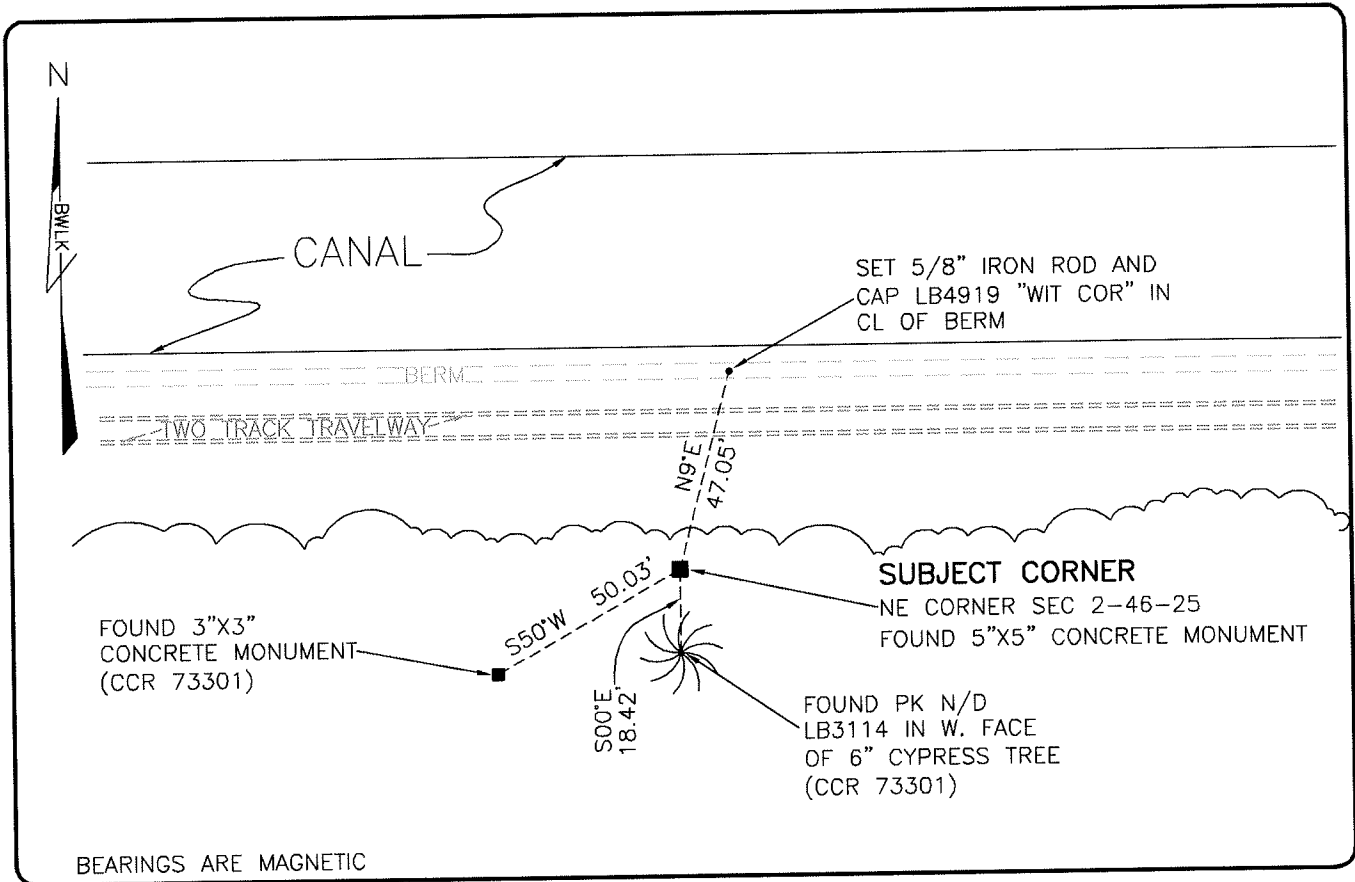


LAND CORNER RECORD

**PUBLIC WORKS
LEE COUNTY, FLORIDA**

Address - 1500 Monroe St., Ft. Myers, Fla. 33901

Phone : (239) 479-8900



BEARINGS ARE MAGNETIC

COMMENTS:

FOUND SUBJECT CORNER AND REFERENCES IN HARMONY WITH CCR 73301.

CORNER DESCRIPTION

<u>NE</u> Corner	
Section <u>2</u>	
Township <u>46</u>	
Range <u>25</u>	

HORIZONTAL POSITION INFORMATION

Florida West Zone, NAD 1983(1990 Adjustment)
 Northing(ft) 791525.46 Easting(ft) 730180.60
 Latitude 26°30'39.9692" Longitude 81°46'25.2086"
 Scale Factor 0.99994

EXISTING CERTIFIED CORNER RECORDS

Document No.	Date
<u>73301</u>	<u>3-8-01</u>

The above documents are based on FDEP Bureau of Surveying and Mapping Record Information.

I hereby certify the monument and accessories shown above were field located on 6-19-07.

SCOTT C. WHITAKER
 Professional Surveyor and Mapper
 Florida Certificate No. 4324
 Date Signed 8-22-07

BEAN, WHITAKER, LUTZ & KAREH, INC. (LB 4919)
 13041 McGregor Boulevard
 Fort Myers, Florida 33919-5910
 Phone: (239) 481-1331

POINT NO. 12135

BLM REFERENCE NO. T46SR25E600700