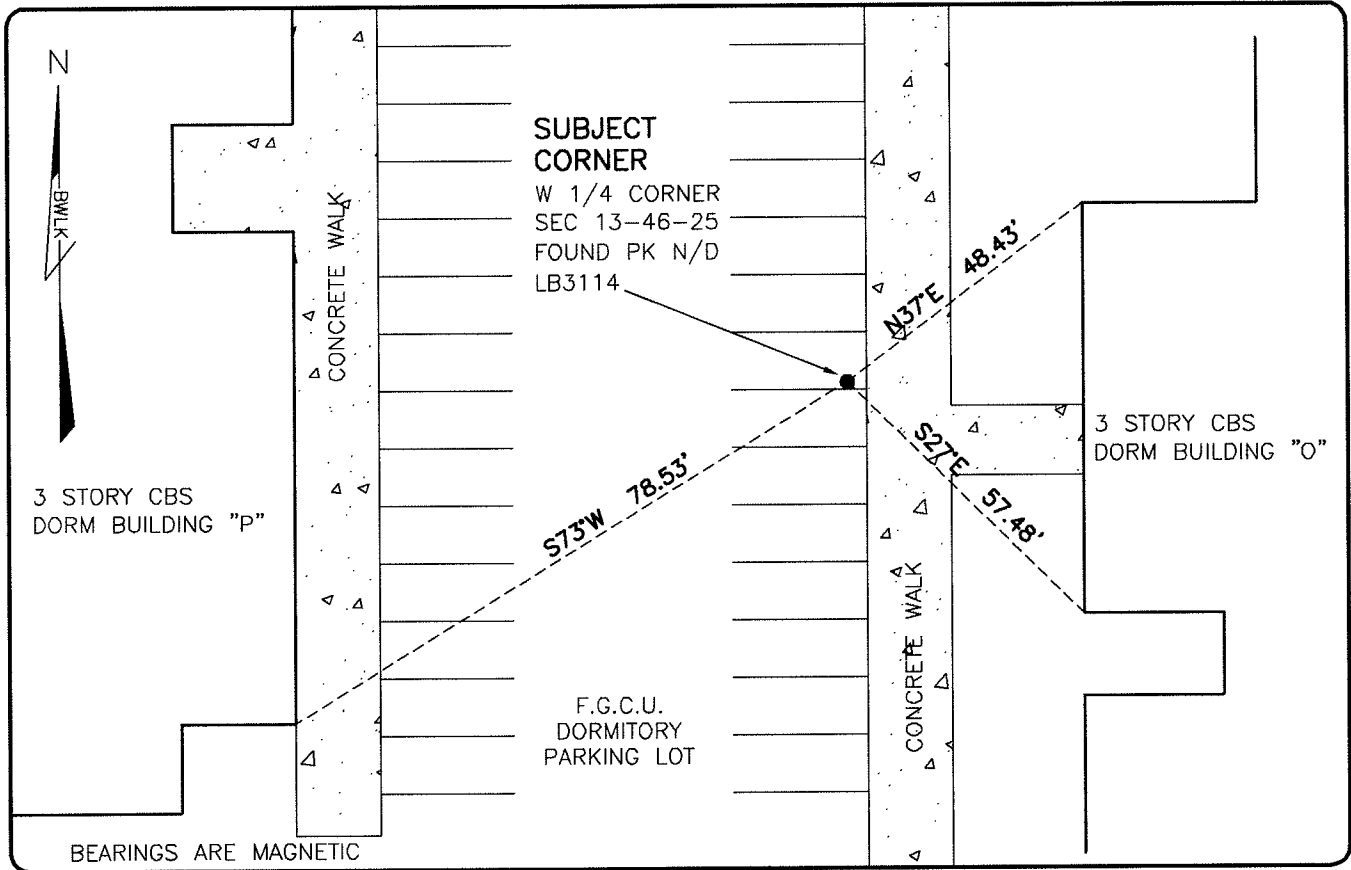


LAND CORNER RECORD

**PUBLIC WORKS
LEE COUNTY, FLORIDA**

Address - 1500 Monroe St., Ft. Myers, Fla. 33901

Phone : (239) 479-8900



SUBJECT CORNER
W 1/4 CORNER
SEC 13-46-25
FOUND PK N/D
LB3114

3 STORY CBS
DORM BUILDING "O"

F.G.C.U.
DORMITORY
PARKING LOT

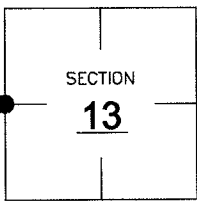
BEARINGS ARE MAGNETIC

COMMENTS:

FOUND SUBJECT CORNER AND REFERENCES IN HARMONY WITH CCR 81684 & 79055.

CORNER DESCRIPTION

W 1/4 Corner
Section 13
Township 46
Range 25



HORIZONTAL POSITION INFORMATION

Florida West Zone, NAD 1983(1990 Adjustment)
Northing(ft) 777004.05 Easting(ft) 730471.84
Latitude 26°28'16.1416" Longitude 81°46'22.2852"
Scale Factor 0.99994

EXISTING CERTIFIED CORNER RECORDS

Document No.	Date
<u>81684</u>	<u>10-14-03</u>
<u>79055</u>	<u>10-11-02</u>
_____	_____
_____	_____

The above documents are based on FDEP Bureau of Surveying and Mapping Record Information.

I hereby certify the monument and accessories shown above were field located on 6-27-07.

Scott C. Whitaker
SCOTT C. WHITAKER
Professional Surveyor and Mapper
Florida Certificate No. 4324
Date Signed 8-22-07

BEAN, WHITAKER, LUTZ & KAREH, INC. (LB 4919)
13041 McGregor Boulevard
Fort Myers, Florida 33919-5910
Phone: (239) 481-1331

POINT NO. 12159

BLM REFERENCE NO. T46SR25E600440