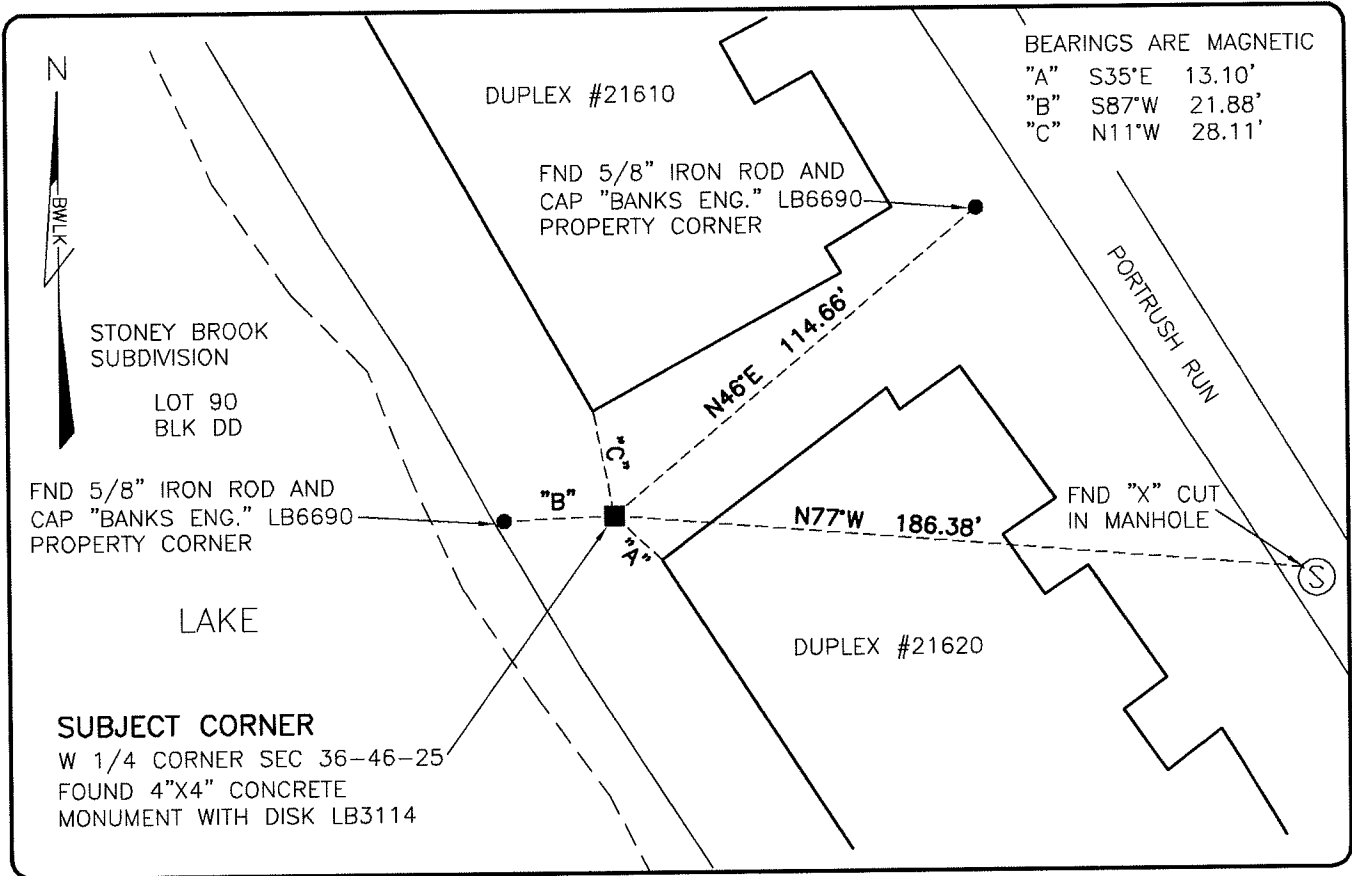


**LAND CORNER RECORD**

**PUBLIC WORKS  
LEE COUNTY, FLORIDA**

Address - 1500 Monroe St., Ft. Myers, Fla. 33901

Phone : (239) 479-8900

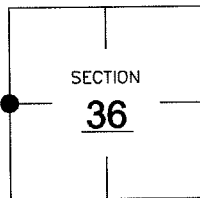


**COMMENTS:**

SUBJECT CORNER IN HARMONY WITH CCR'S 81707,81642 & 79090. THERE SEEMS TO BE AN ERROR ON THE REFERENCES. ALL THREE CCR'S WERE COMPLETED BY THE SAME FIRM.

**CORNER DESCRIPTION**

W 1/4 Corner  
 Section 36  
 Township 46  
 Range 25



**HORIZONTAL POSITION INFORMATION**

Florida West Zone, NAD 1983(1990 Adjustment)  
 Northing(ft) 761222.09 Easting(ft) 730634.25  
 Latitude 26°25'39.8307" Longitude 81°46'20.8052"  
 Scale Factor 0.99994

**EXISTING CERTIFIED CORNER RECORDS**

Document No.	Date
<u>81707</u>	<u>10-8-02</u>
<u>81642</u>	<u>8-26-03</u>
<u>79090</u>	<u>10-8-02</u>

The above documents are based on FDEP Bureau of Surveying and Mapping Record Information.

I hereby certify the monument and accessories shown above were field located on 6-29-07.

*Scott C. Whitaker*  
**SCOTT C. WHITAKER**  
 Professional Surveyor and Mapper  
 Florida Certificate No. 4324  
 Date Signed 8-22-07

BEAN, WHITAKER, LUTZ & KAREH, INC. (LB 4919)  
 13041 McGregor Boulevard  
 Fort Myers, Florida 33919-5910  
 Phone: (239) 481-1331

POINT NO. 12163

BLM REFERENCE NO. T46SR25E600140