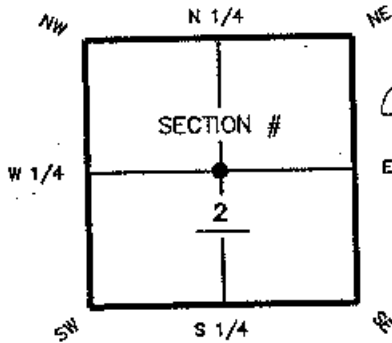


C-19 CERTIFIED CORNER RECORD

CORNER DESCRIPTION: MONUMENTATION DESCRIPTION (EVIDENCE FOUND OR METHOD TO SET)

Depict corner with ●

FOUND DISTURBED 4" X 4" CONCRETE MONUMENT WITH 1/2" IRON ROD
 RESET 4" X 4" CONCRETE MONUMENT WITH DISK STAMPED "AIM ENGINEERING &
 SURVEYING, INC. "LB 3114" PRM. CTR. 2"
 0.30' BELOW GROUND



C19

CTR corner of Section 2
 Twp 46 South, Rge 25 East
 Tallahassee Base Meridian,
 LEE County(s), Florida

HORIZONTAL POSITION AND HEIGHT INFORMATION (if determined):

Latitude 26° 30' 00.6278" N Longitude 81° 46' 53.5310" W

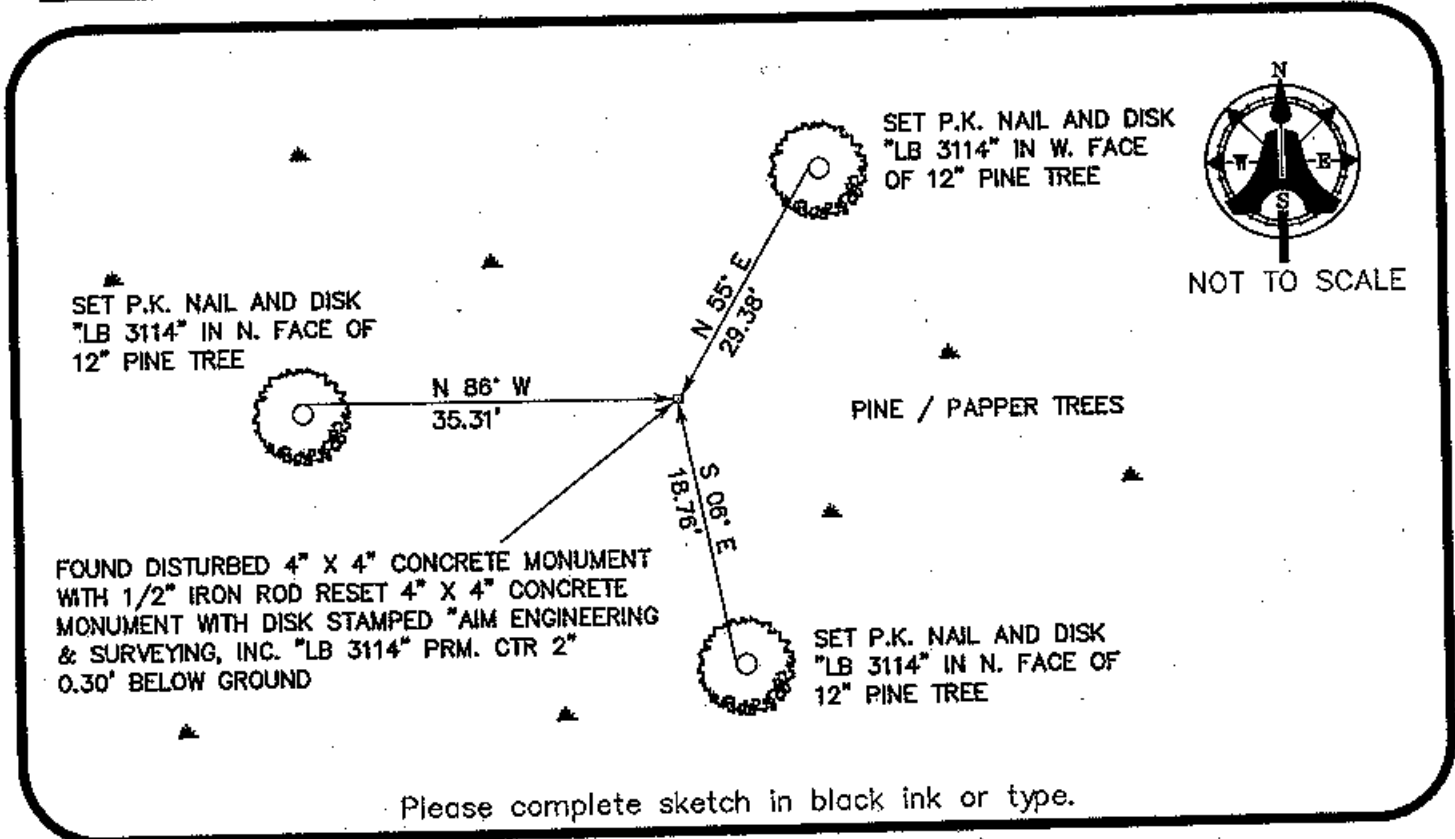
Y(NORTHING-Ft.) 787548.797 X(EASTING-Ft.) 727614.611 Zone FL WEST

Convergence 00° 05' 50.9" Scale factor 0.99994703

Coordinate determination (circle one): Field traverse GPS

Horizontal datum (circle one): NAD27 NAD83(1986) NAD83(1990) other (explain)

Accuracy (circle one): 1st 2nd 3rd other



NOT TO SCALE

SURVEYORS CERTIFICATE

I certify the monument and accessories indicated above were field located on MAY 20, 2001

SEND ORIGINAL TO:
 Department of Environmental Protection
 Bureau of Survey and Mapping
 3900 Commonwealth Boulevard
 Mail Station 105
 Tallahassee, Florida 32399

J.R. Brindley
 SIGNATURE
 2995
 PSM NO.
 9-12-01
 DATE
 AIM ENGINEERING & SURVEYING, INC. LB 3114
 FIRM OR AGENCY LB NO.
 5300 LEE BOULEVARD
 ADDRESS
 LEHIGH ACRES, FLORIDA 33971
 CITY STATE ZIP

D.E.P. USE ONLY
 Completeness checked by: CS
 Accepted and filed: 9-70-01 Date
 B.L.M. - I.D. 540640
 QUAD - I.D. 368 Estero

EMBOSSSED SEAL OVER SIGNATURE