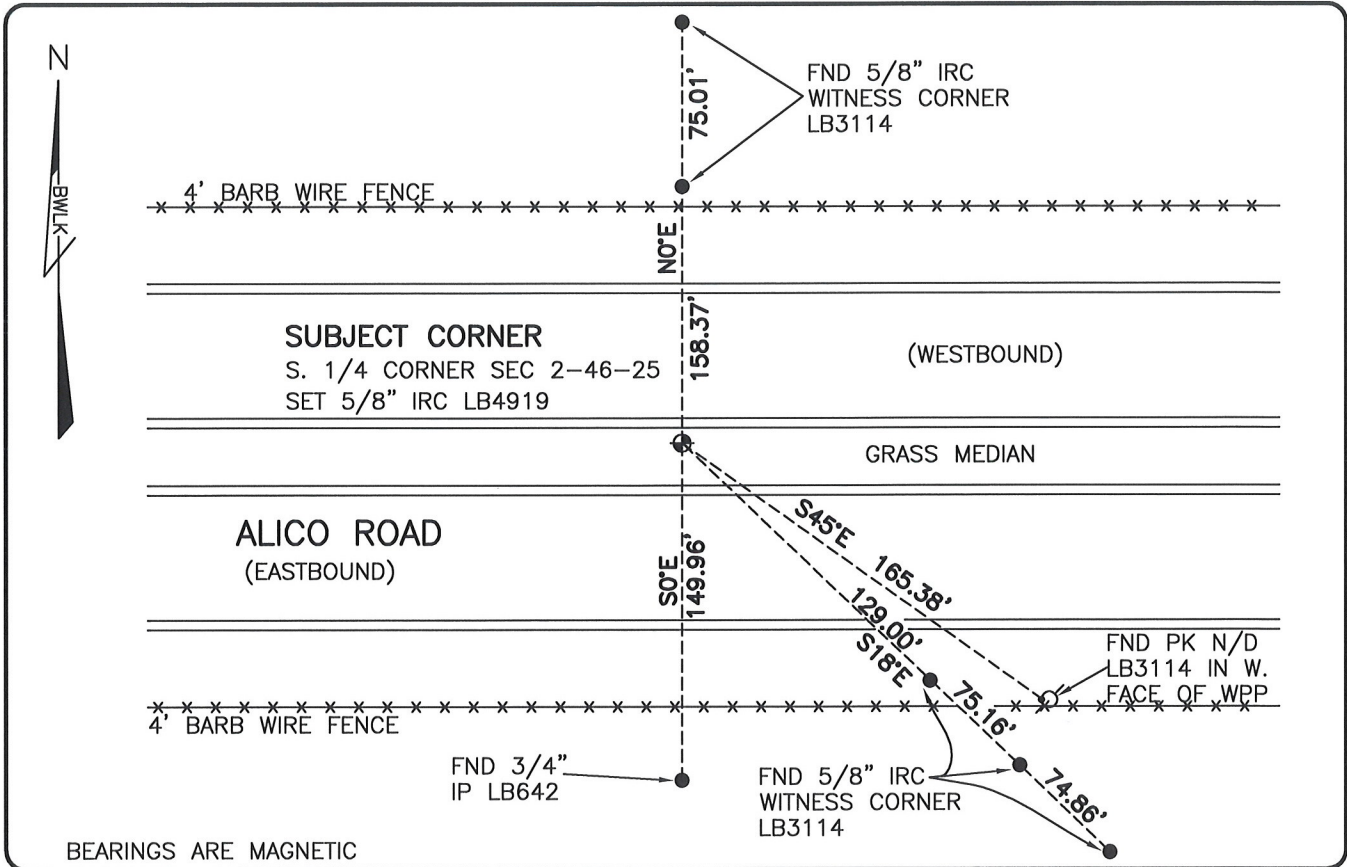


LAND CORNER RECORD

**PUBLIC WORKS
LEE COUNTY, FLORIDA**

Address - 1500 Monroe St., Ft. Myers, Fla. 33901

Phone : (239) 479-8900



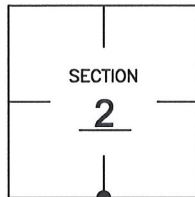
BEARINGS ARE MAGNETIC

COMMENTS:

SET SUBJECT CORNER BASED ON HISTORICAL RECORDS OF PREVIOUS LOCATION PRIOR TO CONSTRUCTION OF ALICO ROAD AND IN HARMONY WITH CCR 73304.

CORNER DESCRIPTION

S 1/4 Corner
Section 2
Township 46
Range 25



HORIZONTAL POSITION INFORMATION

Florida West Zone, NAD 1983(1990 Adjustment)
Northing(ft) 784902.91 Easting(ft) 727667.47
Latitude 26°29'34.4216" Longitude 81°46'52.9987"
Scale Factor 0.99994

EXISTING CERTIFIED CORNER RECORDS

Document No.	Date
<u>73304</u>	<u>7-2-01</u>
<u>41705</u>	<u>4-9-91</u>

The above documents are based on FDEP Bureau of Surveying and Mapping Record Information.

I hereby certify the monument and accessories shown above were field located on 3-29-08.

Scott C. Whitaker

SCOTT C. WHITAKER
Professional Surveyor and Mapper
Florida Certificate No. 4324
Date Signed 5/30/08

BEAN, WHITAKER, LUTZ & KAREH, INC. (LB 4919)
13041 McGregor Boulevard
Fort Myers, Florida 33919-5910
Phone: (239) 481-1331

POINT NO. 12200

BLM REFERENCE NO. T46SR25E540600