

FLORIDA DEPARTMENT OF ENVIRONMENTAL PROTECTION

P-19 CERTIFIED CORNER RECORD

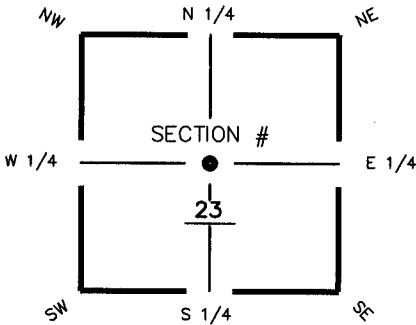
081697

DOC. # _____

CORNER DESCRIPTION: MONUMENTATION DESCRIPTION (EVIDENCE FOUND OR METHOD TO SET)

Depict corner with ●

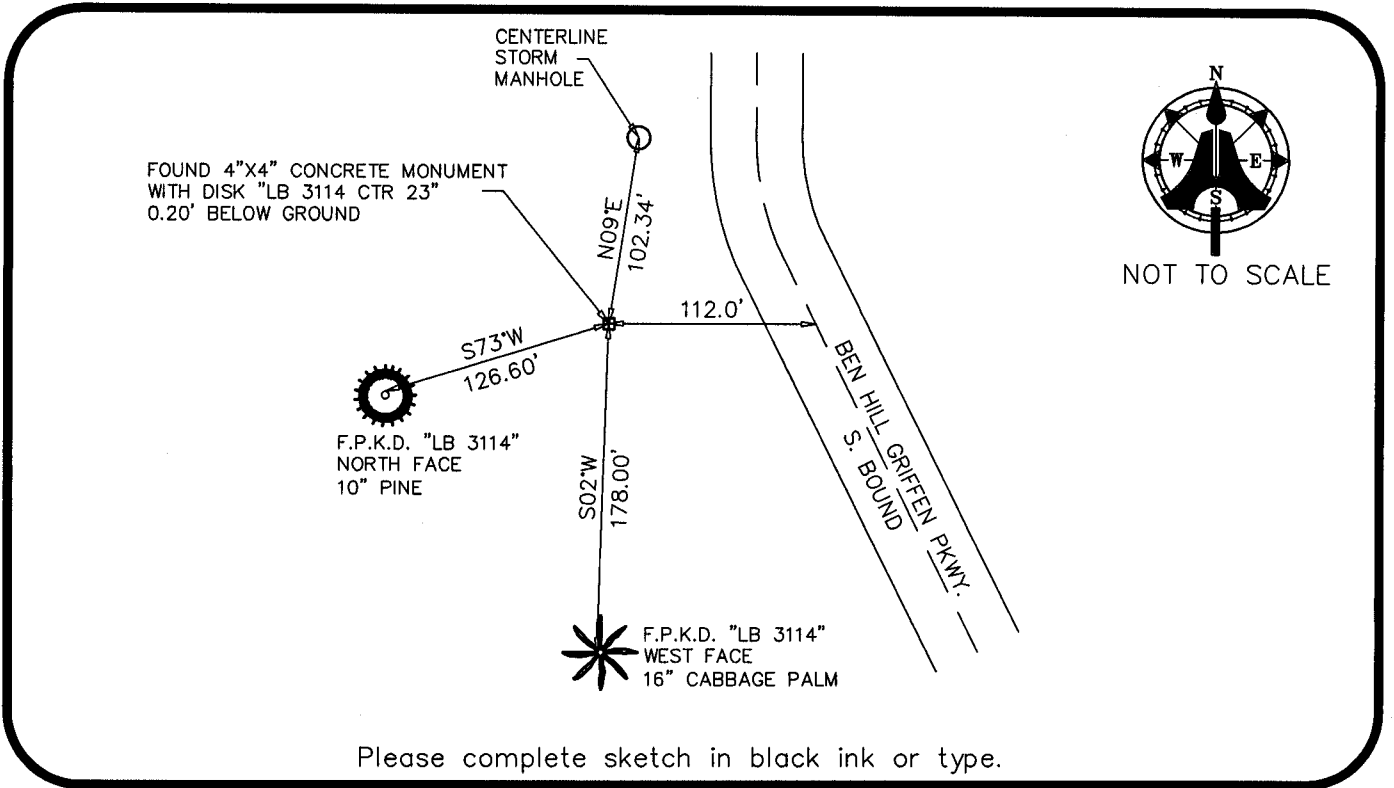
FOUND 4"x4" CONCRETE MONUMENT WITH DISK "LB 3114 CTR 23"
0.20' BELOW GROUND



CTR corner of Section 23
Twp 46 S, Rge 25 E
Tallahassee Base Meridian,
LEE County(s), Florida

HORIZONTAL POSITION INFORMATION (if determined):

Latitude 26° 27' 23.6114" N Longitude 81° 46' 51.2113" W
Y(NORTHING-Ft.) 771695.677 X(EASTING-Ft.) 727852.378 Zone FLW
Convergence 00° 05' 51.4" Scale factor 0.99994707
Coordinate determination (circle one): Field traverse GPS
Horizontal datum (circle one): NAD27 NAD83(1986) NAD83(1990) other (explain)
Accuracy (circle one): 1st 2nd 3rd other _____



Please complete sketch in black ink or type.

SURVEYORS CERTIFICATE:

I certify the monument and accessories indicated above were field located on 10/14/03

[Signature]
SIGNATURE 5688
FIRM OR AGENCY PSM NO.
AIM ENGINEERING & SURVEYING, INC. LB 3114
FIRM OR AGENCY LB NO.
5300 LEE BOULEVARD
ADDRESS
LEHIGH ACRES, FLORIDA 33971
CITY STATE ZIP
(239) 332-4569 04/20/04
PHONE NUMBER DATE

SEND ORIGINAL TO:
Department of Environmental Protection
Bureau of Surveying and Mapping
3900 Commonwealth Boulevard
Mail Station 105
Tallahassee, Florida 32399

D.E.P. USE ONLY
Processed: 5-12-04
B.L.M. - I.D. 540340
QUAD - I.D. 20054400

EMBOSSSED SEAL OVER SIGNATURE