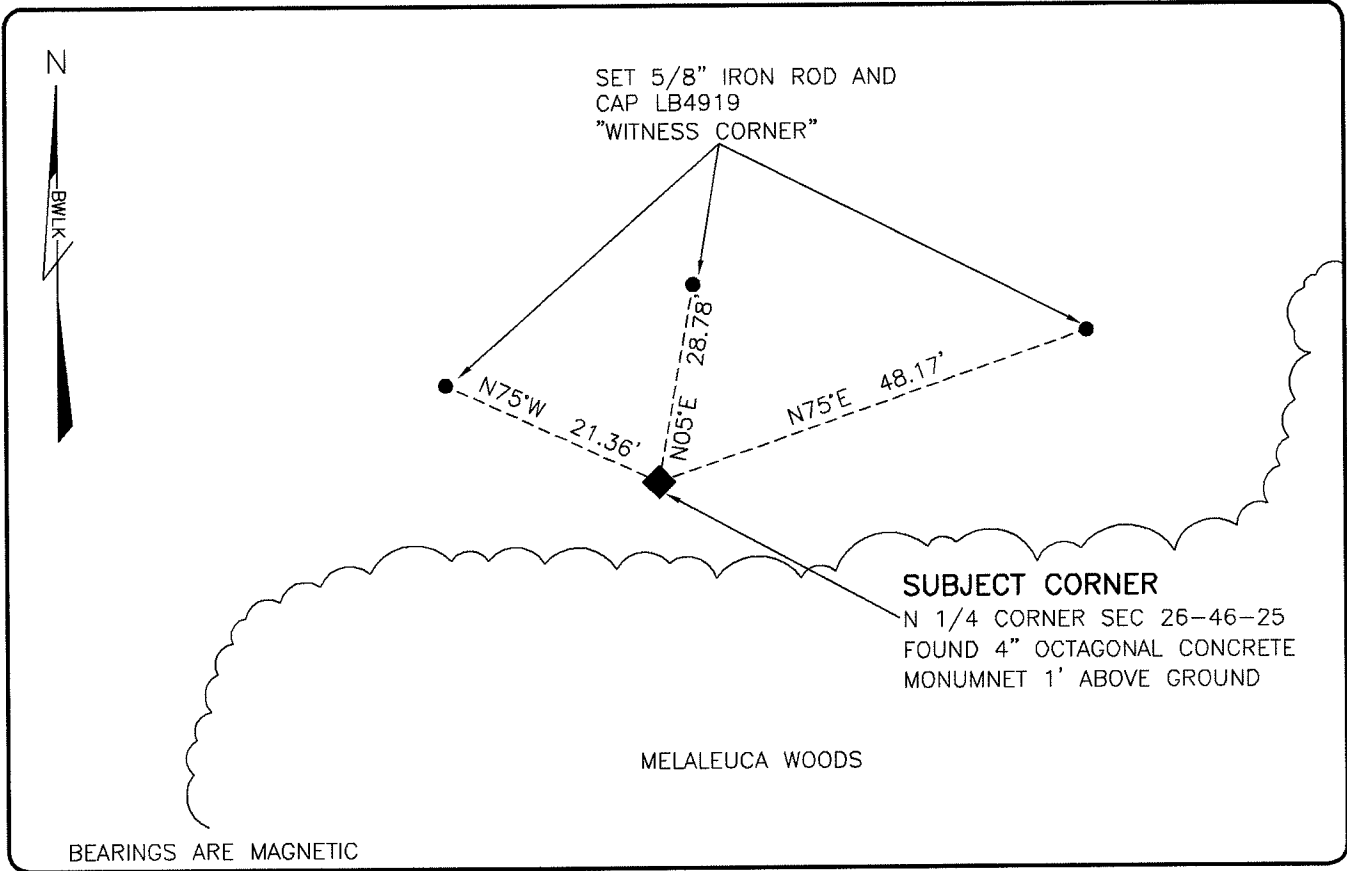


LAND CORNER RECORD

**PUBLIC WORKS
LEE COUNTY, FLORIDA**

Address - 1500 Monroe St., Ft. Myers, Fla. 33901

Phone : (239) 479-8900



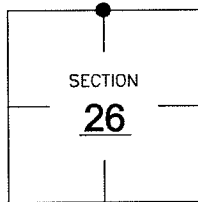
BEARINGS ARE MAGNETIC

COMMENTS:

FOUND SUBJECT CORNER IN HARMONY WITH CCR 81698 AND CCR 79073. ALL REFERENCES FROM THE CCR'S WERE DESTROYED WHEN FENCE WAS REMOVED. SET NEW REFERENCES.

CORNER DESCRIPTION

N 1/4 Corner
Section 26
Township 46
Range 25



HORIZONTAL POSITION INFORMATION

Florida West Zone, NAD 1983(1990 Adjustment)

Northing(ft) 769100.89 Easting(ft) 727868.12

Latitude 26°26'57.9118" Longitude 81°46'51.0868"

Scale Factor 0.99994

EXISTING CERTIFIED CORNER RECORDS

Document No.	Date
<u>81698</u>	<u>10-14-03</u>
<u>79073</u>	<u>8-15-02</u>
_____	_____
_____	_____

The above documents are based on FDEP Bureau of Surveying and Mapping Record Information.

I hereby certify the monument and accessories shown above were field located on 6-20-07.

Scott C. Whitaker

SCOTT C. WHITAKER
Professional Surveyor and Mapper
Florida Certificate No. 4324
Date Signed 8-22-07

BEAN, WHITAKER, LUTZ & KAREH, INC. (LB 4919)
13041 McGregor Boulevard
Fort Myers, Florida 33919-5910
Phone: (239) 481-1331

POINT NO. 12137

BLM REFERENCE NO. T46SR25E540300