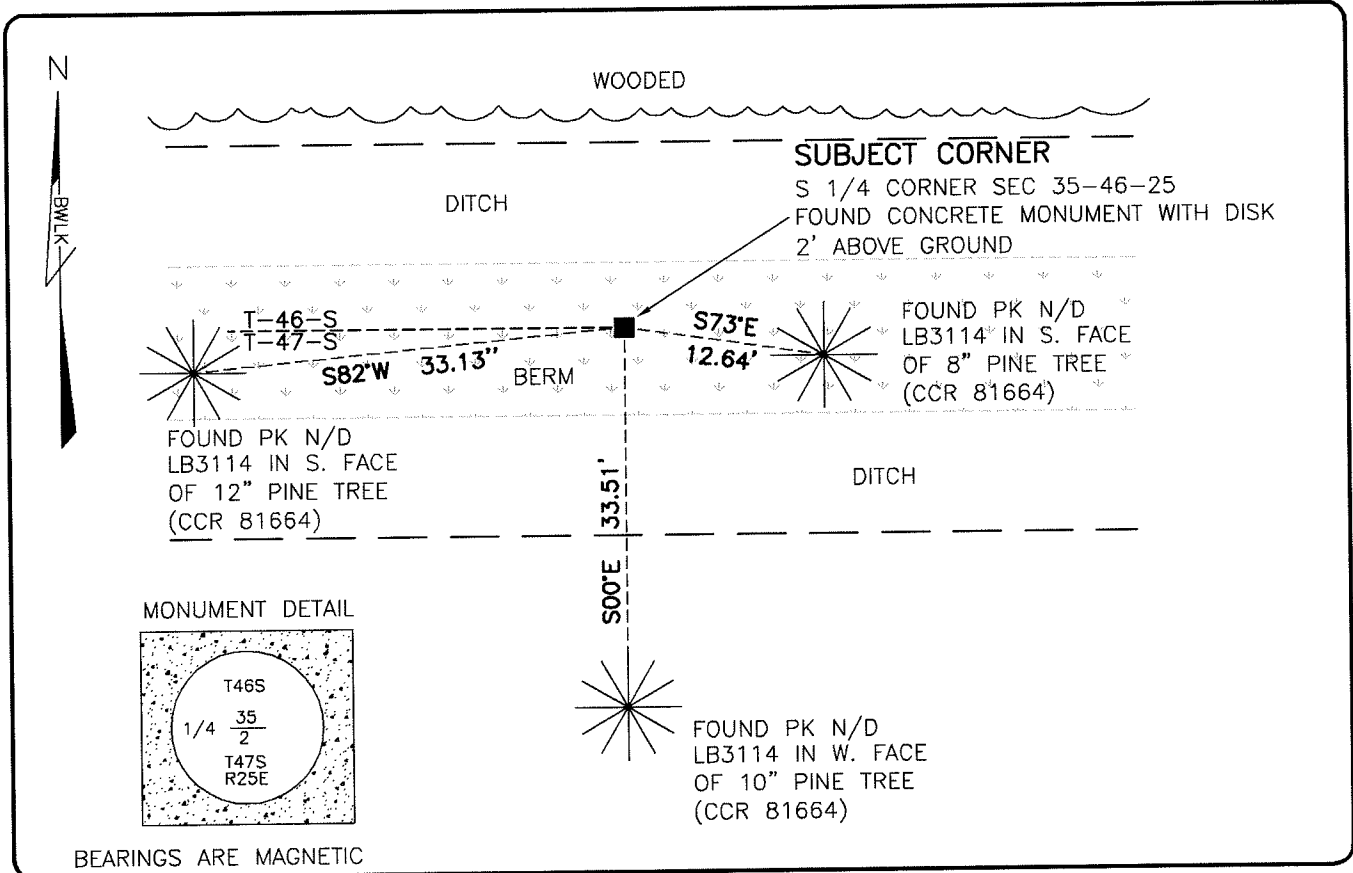


LAND CORNER RECORD

**PUBLIC WORKS
LEE COUNTY, FLORIDA**

Address - 1500 Monroe St., Ft. Myers, Fla. 33901

Phone : (239) 479-8900

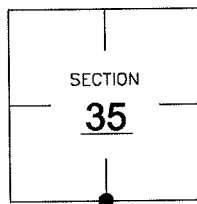


COMMENTS:

SUBJECT CORNER AND REFERENCES FOUND AND IN HARMONY WITH CCR 81664, 81709, & 79092.

CORNER DESCRIPTION

S 1/4 Corner
Section 35
Township 46
Range 25



HORIZONTAL POSITION INFORMATION

Florida West Zone, NAD 1983(1990 Adjustment)

Northing(ft) 758592.02 Easting(ft) 728029.36

Latitude 26°25'13.8266" Longitude 81°46'49.5099"

Scale Factor 0.99994

EXISTING CERTIFIED CORNER RECORDS

Document No.	Date
<u>81644</u>	<u>8-25-03</u>
<u>81709</u>	<u>10-14-03</u>
<u>79092</u>	<u>8-18-02</u>

The above documents are based on FDEP Bureau of Surveying and Mapping Record Information.

I hereby certify the monument and accessories shown above were field located on 6-21-07.

Scott C. Whitaker
SCOTT C. WHITAKER
Professional Surveyor and Mapper
Florida Certificate No. 4324
Date Signed 8-22-07

BEAN, WHITAKER, LUTZ & KAREH, INC. (LB 4919)
13041 McGregor Boulevard
Fort Myers, Florida 33919-5910
Phone: (239) 481-1331

POINT NO. 12139

BLM REFERENCE NO. T46SR25E540100