

**FLORIDA DEPARTMENT OF ENVIRONMENTAL PROTECTION**

DOC. # \_\_\_\_\_

**081670**

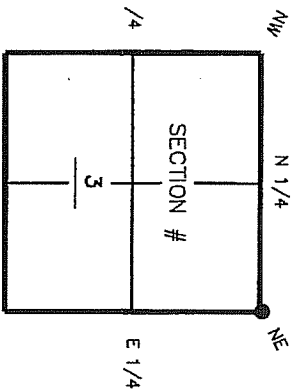
**A-17 CERTIFIED CORNER RECORD**

BLM# T46SR25E500700

CORNER DESCRIPTION:

MONUMENTATION DESCRIPTION (EVIDENCE FOUND OR METHOD TO SET)

Depict corner with ●



FOUND 6"X 6" CONCRETE MONUMENT, 1.0' ABOVE GROUND.  
WITH CORNER NUMBERS ON SIDES

HORIZONTAL POSITION AND HEIGHT INFORMATION ( if determined ):

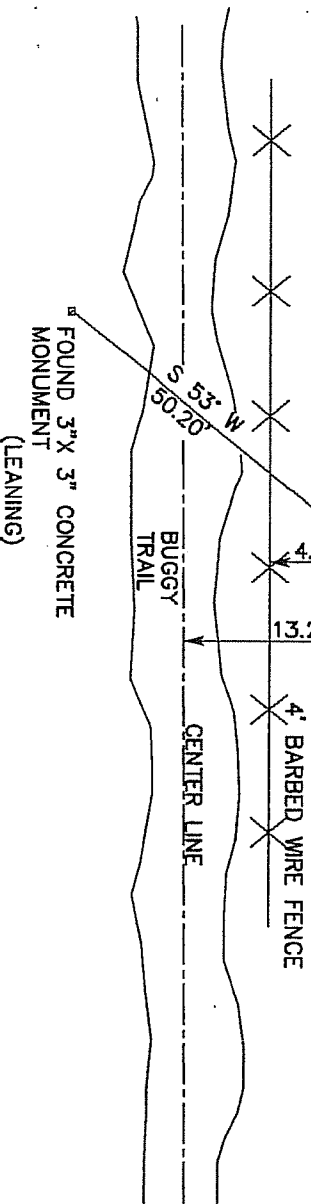
Latitude 26° 30' 39.4131" N Longitude 81° 47' 23.4006" W  
 Y(NORTHING-Ft.) 791460.325 X(EASTING-Ft.) 724894.642 Zone FL WEST  
 Convergence 00° 05' 37.7" Scale factor 0.99994659  
 Coordinate determination (circle one): GPS Field traverse  
 Horizontal datum (circle one): NAD27 NAD83(1986) NAD83(1990) other (explain)  
 Accuracy (circle one): 1st 2nd 3rd other \_\_\_\_\_

FOUND 3"X 3" CONCRETE MONUMENT

FOUND 3"X 3" CONCRETE MONUMENT



FOUND 6"X 6" CONCRETE MONUMENT  
1.0' ABOVE GROUND  
NOT TO SCALE



Please complete sketch in black ink or type.

**JRVEYORS CERTIFICATE:**

certify the monument and accessories indicated above were field located on 10/14/03

DATE 04/20/04 SIGNATURE [Signature] PSM NO. 5688

FIRM OR AGENCY JIM ENGINEERING & SURVEYING, INC. LB NO. LB 3114

ADDRESS 300 LEE BOULEVARD CITY FLORIDA STATE FLORIDA ZIP 33971

EMBOSSED SEAL OVER SIGNATURE

SEND ORIGINAL TO:  
Department of Environmental Protection  
Bureau of Survey and Mapping  
3900 Commonwealth Boulevard  
Mall Station 105  
Tallahassee, Florida 32399

D.E.P. USE ONLY  
Completeness checked by: CH  
Accepted and filed: 5-12-07 Date  
B.L.M. - I.D. 500700  
QUAD - I.D. 215 Fort Myers SE