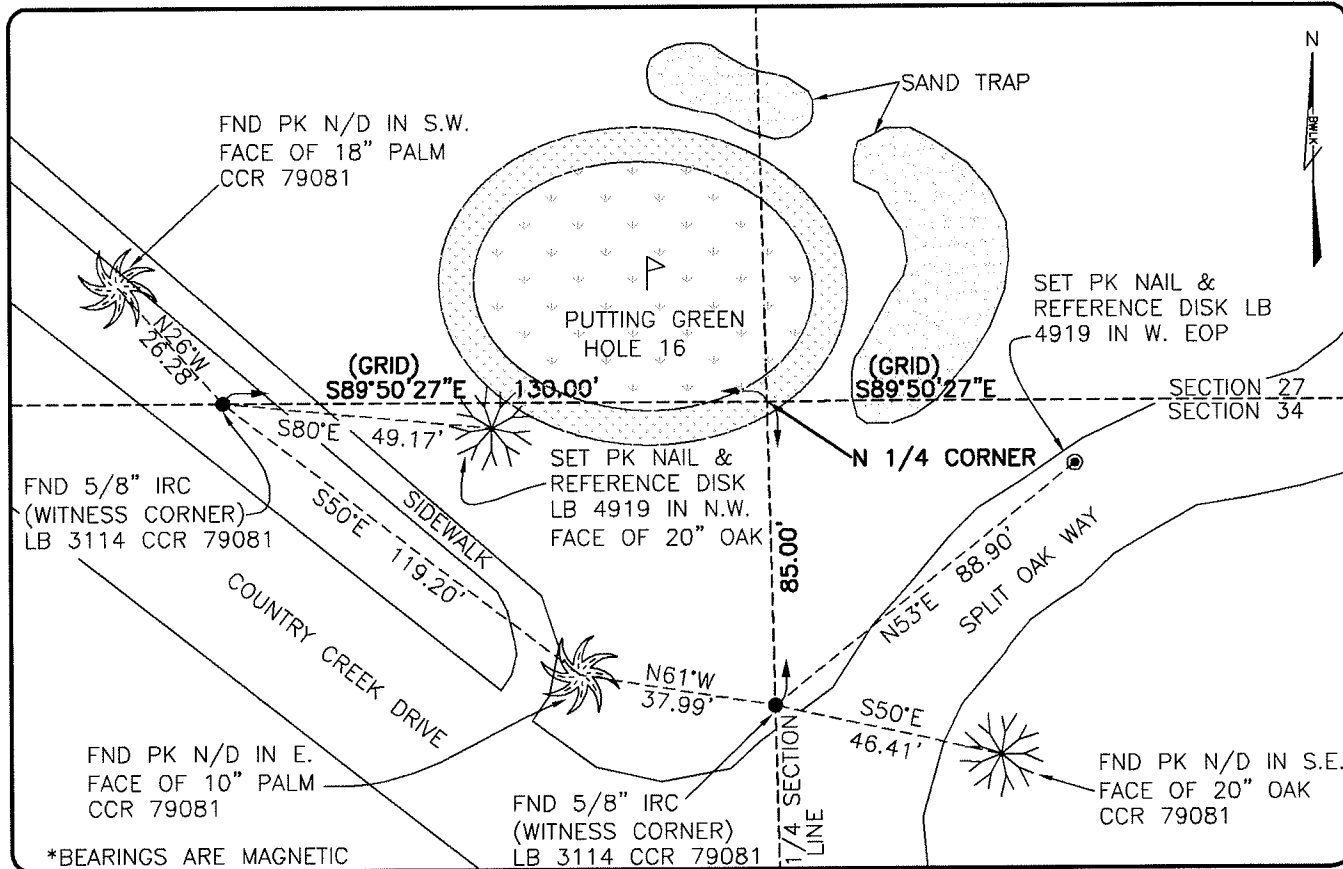


**LAND CORNER RECORD**

**PUBLIC WORKS  
LEE COUNTY, FLORIDA**

Address - 1500 Monroe St., Ft. Myers, Fla. 33901

Phone : (239) 479-8900



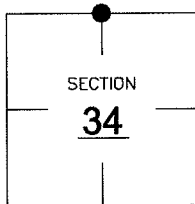
\*BEARINGS ARE MAGNETIC

**COMMENTS:**

SUBJECT CORNER FALLS ON PUTTING GREEN. DID NOT RESET. FOUND TWO 5/8" IRON RODS WITH CAPS "WITNESS CORNER LB3114" PER CCR 79081.

**CORNER DESCRIPTION**

**N 1/4** Corner  
Section **34**  
Township **46**  
Range **25**



**HORIZONTAL POSITION INFORMATION**

Florida West Zone, NAD 1983(1990 Adjustment)  
Northing(ft) **763826.04** Easting(ft) **722646.85**  
Latitude **26°26'05.7532"** Longitude **81°47'48.6264"**  
Scale Factor **0.99994**

**EXISTING CERTIFIED CORNER RECORDS**

Document No.	Date
<b>79081</b>	<b>7-23-03</b>
<b>22606</b>	<b>1-14-86</b>
<b>15294</b>	<b>10-26-82</b>

The above documents are based on FDEP Bureau of Surveying and Mapping Record Information.

I hereby certify the monument and accessories shown above were field located on **6-7-07**.

*Scott C. Whitaker*  
**SCOTT C. WHITAKER**  
Professional Surveyor and Mapper  
Florida Certificate No. **4324**  
Date Signed **6-22-07**

BEAN, WHITAKER, LUTZ & KAREH, INC. (LB 4919)  
13041 McGregor Boulevard  
Fort Myers, Florida 33919-5910  
Phone: (239) 481-1331

POINT NO. **12146**

BLM REFERENCE NO. **T46SR25S440200**