

LAND CORNER RECORD

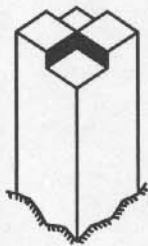
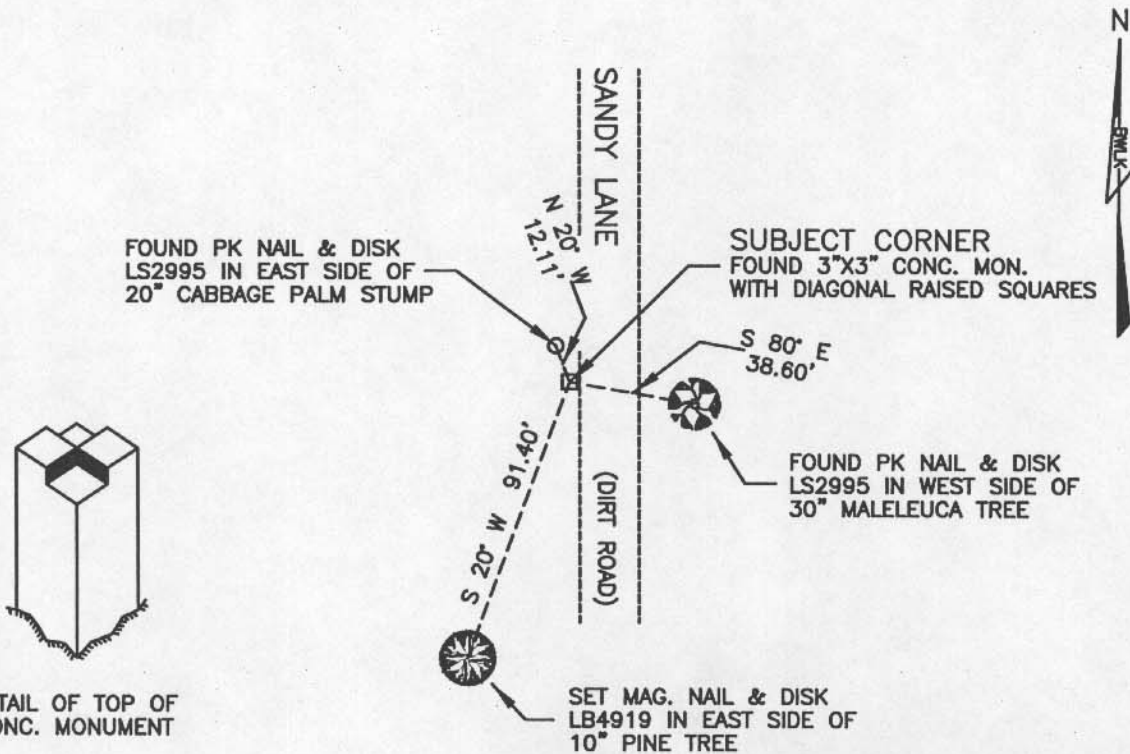
PUBLIC WORKS

LEE COUNTY, FLORIDA

Address - 1500 Monroe St., Ft. Myers, Fla. 33901

Phone : (239) 479-8900

NOTE: BEARINGS ARE MAGNETIC



DETAIL OF TOP OF CONC. MONUMENT

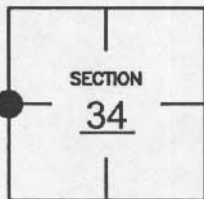
NOT TO SCALE

COMMENTS:

Recovered corner and two references as described on CCR 365559.

CORNER DESCRIPTION

W 1/4 Corner  
 Section 34  
 Township 46  
 Range 25



HORIZONTAL POSITION INFORMATION

Florida West Zone, NAD 1983(1990 Adjustment)

Northing(ft) 761218.509 Easting(ft) 720046.870

Latitude 26°25'39.97\" N Longitude 81°48'17.27\" W

Scale Factor 0.999945855

EXISTING CERTIFIED CORNER RECORDS

Document No.	Date
<u>65559</u>	<u>10-12-99</u>
<u>15291</u>	<u>9-16-82</u>
<u>22607</u>	<u>1-08-86</u>

The above documents are based on FDEP Bureau of Surveying and Mapping Record Information.

I hereby certify the monument and accessories shown above were field located on 1-27-05.

JAMES R. COLEMAN  
 Registered Land Surveyor  
 Florida Certificate No. 3205  
 Date Signed 02-23-05

BEAN, WHITAKER, LUTZ & KAREH, INC. (LB 4919)  
 13041 McGregor Boulevard  
 Fort Myers, Florida 33919-5910  
 Phone: (239) 481-1331

CO-ORDINATE NO. 12101

BLM REFERENCE NO. T46SR25E400140