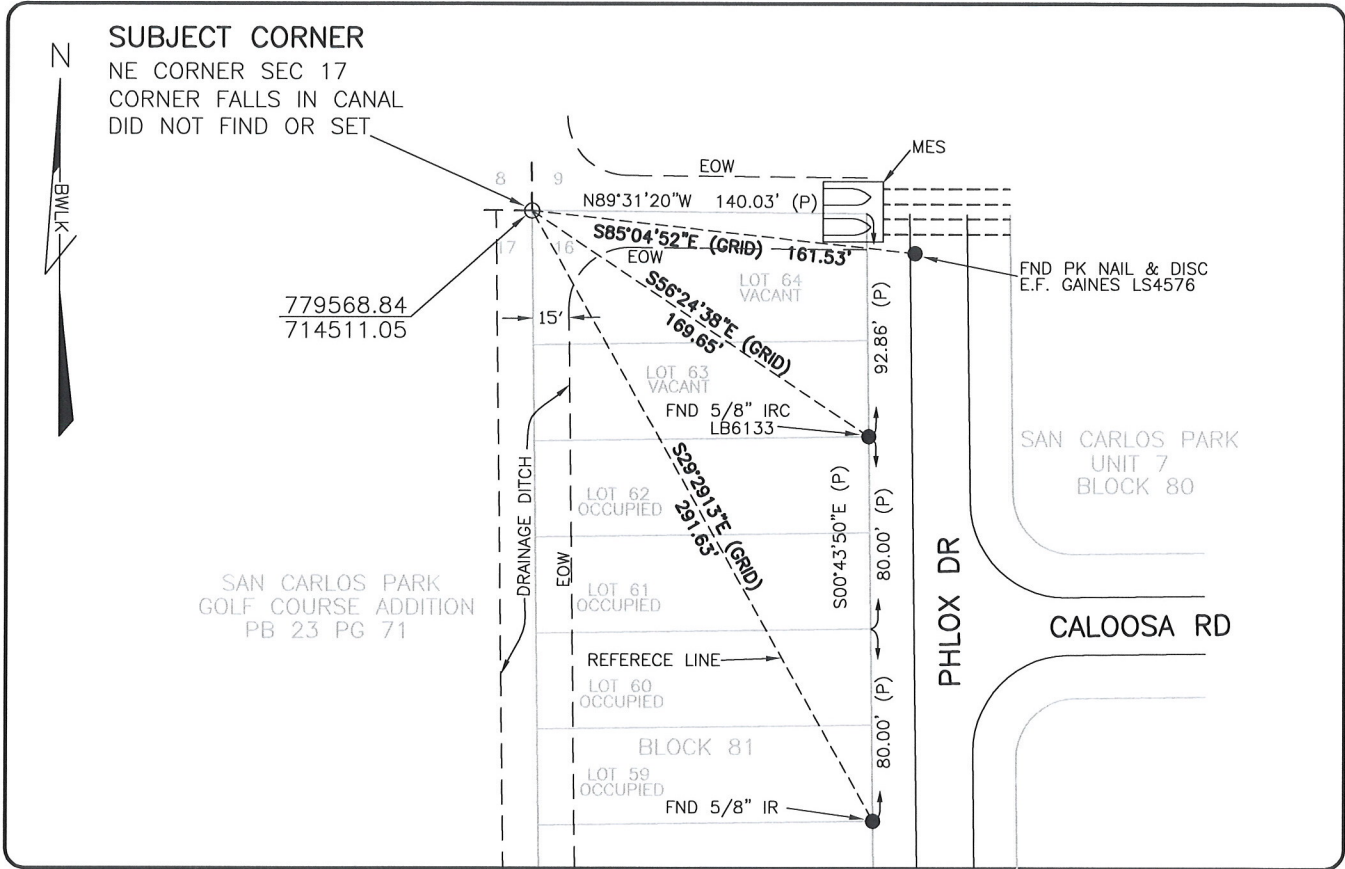


LAND CORNER RECORD

**PUBLIC WORKS
LEE COUNTY, FLORIDA**

Address - 1500 Monroe St., Ft. Myers, Fla. 33901

Phone : (239) 479-8900

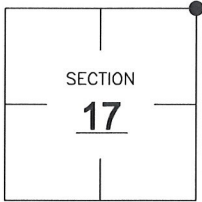


COMMENTS:

SUBJECT CORNER FALLS IN WATER, DID NOT FIND OR SET.
CALCULATED POSITION FROM PLAT OF SAN CARLOS PARK UNIT 7.

CORNER DESCRIPTION

NE Corner
Section **17**
Township **46**
Range **25**



HORIZONTAL POSITION INFORMATION

Florida West Zone, NAD 1983(1990 Adjustment)
Northing(ft) **779568.84** Easting(ft) **714511.05**
Latitude **26°28'41.7932"** Longitude **81°49'17.8908"**
Scale Factor **0.99994**

EXISTING CERTIFIED CORNER RECORDS

Document No.	Date
9544	

The above documents are based on FDEP Bureau of Surveying and Mapping Record Information.

I hereby certify the monument and accessories shown above were field located on **6-13-08**.

Scott C. Whitaker

SCOTT C. WHITAKER
Professional Surveyor and Mapper
Florida Certificate No. **4324**
Date Signed **7/14/08**

BEAN, WHITAKER, LUTZ & KAREH, INC. (LB 4919)
13041 McGregor Boulevard
Fort Myers, Florida 33919-5910
Phone: (239) 481-1331

POINT NO. 12205

BLM REFERENCE NO. T46SR25E300500