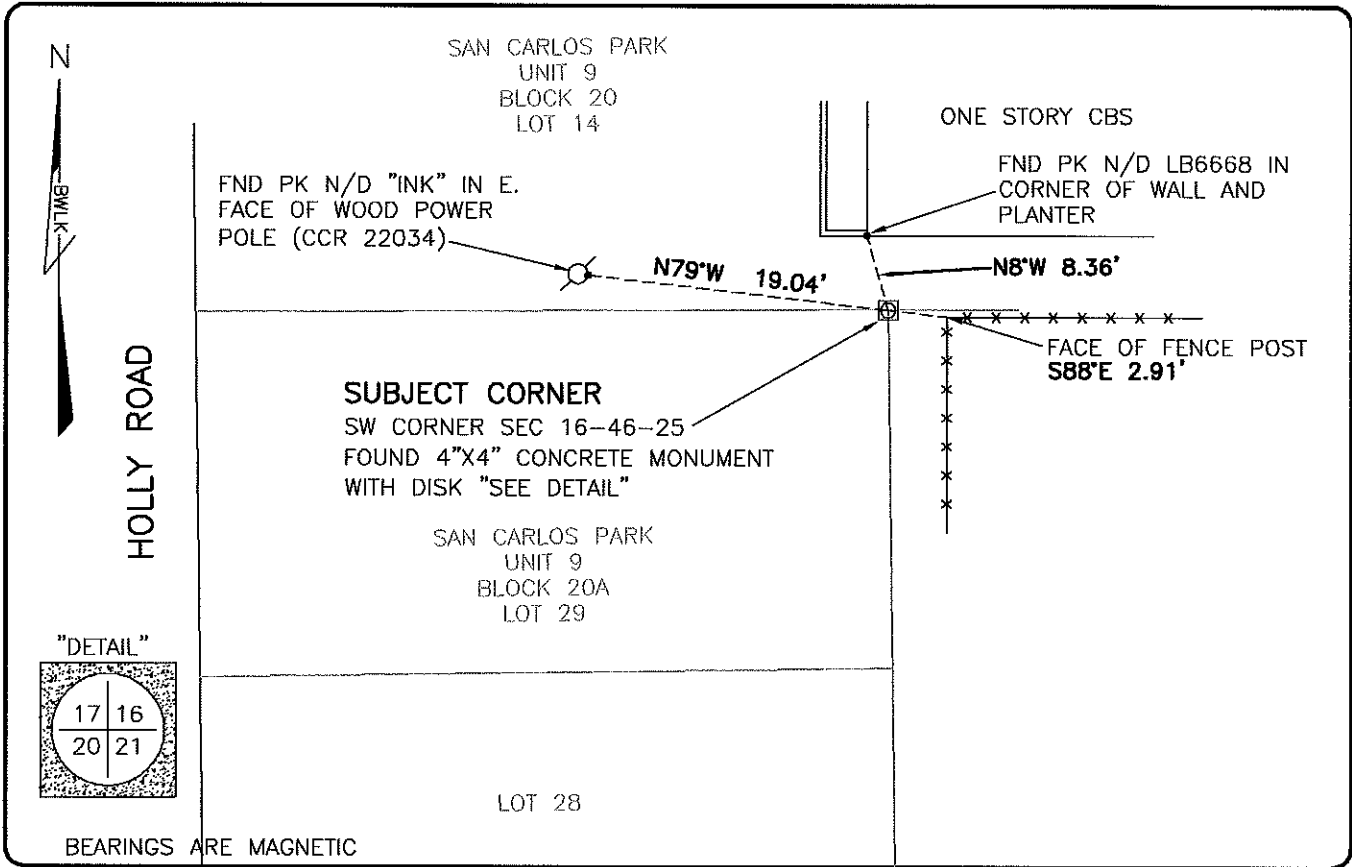


LAND CORNER RECORD

**PUBLIC WORKS
LEE COUNTY, FLORIDA**

Address - 1500 Monroe St., Ft. Myers, Fla. 33901

Phone : (239) 479-8900

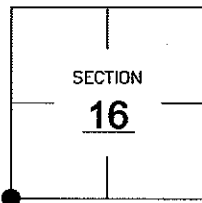


COMMENTS:

FOUND SUBJECT CORNER IN HARMONY WITH CCR 22034 AND THE PLAT OF AN CARLOS PARK.

CORNER DESCRIPTION

SW Corner
Section **16**
Township **46**
Range **25**



HORIZONTAL POSITION INFORMATION

Florida West Zone, NAD 1983(1990 Adjustment)

Northing(ft) **774315.45** Easting(ft) **714583.39**

Latitude **26°27'49.7614"** Longitude **81°49'17.1750"**

Scale Factor **0.99994**

EXISTING CERTIFIED CORNER RECORDS

Document No. **22034** Date **10-26-84**

The above documents are based on FDEP Bureau of Surveying and Mapping Record Information.

I hereby certify the monument and accessories shown above were field located on **8-13-07**.

SCOTT C. WHITAKER

Professional Surveyor and Mapper
Florida Certificate No. **4324**
Date Signed _____

BEAN, WHITAKER, LUTZ & KAREH, INC. (LB 4919)
13041 McGregor Boulevard
Fort Myers, Florida 33919-5910
Phone: (239) 481-1331

POINT NO. **12193**

BLM REFERENCE NO. **T46SR25E300400**