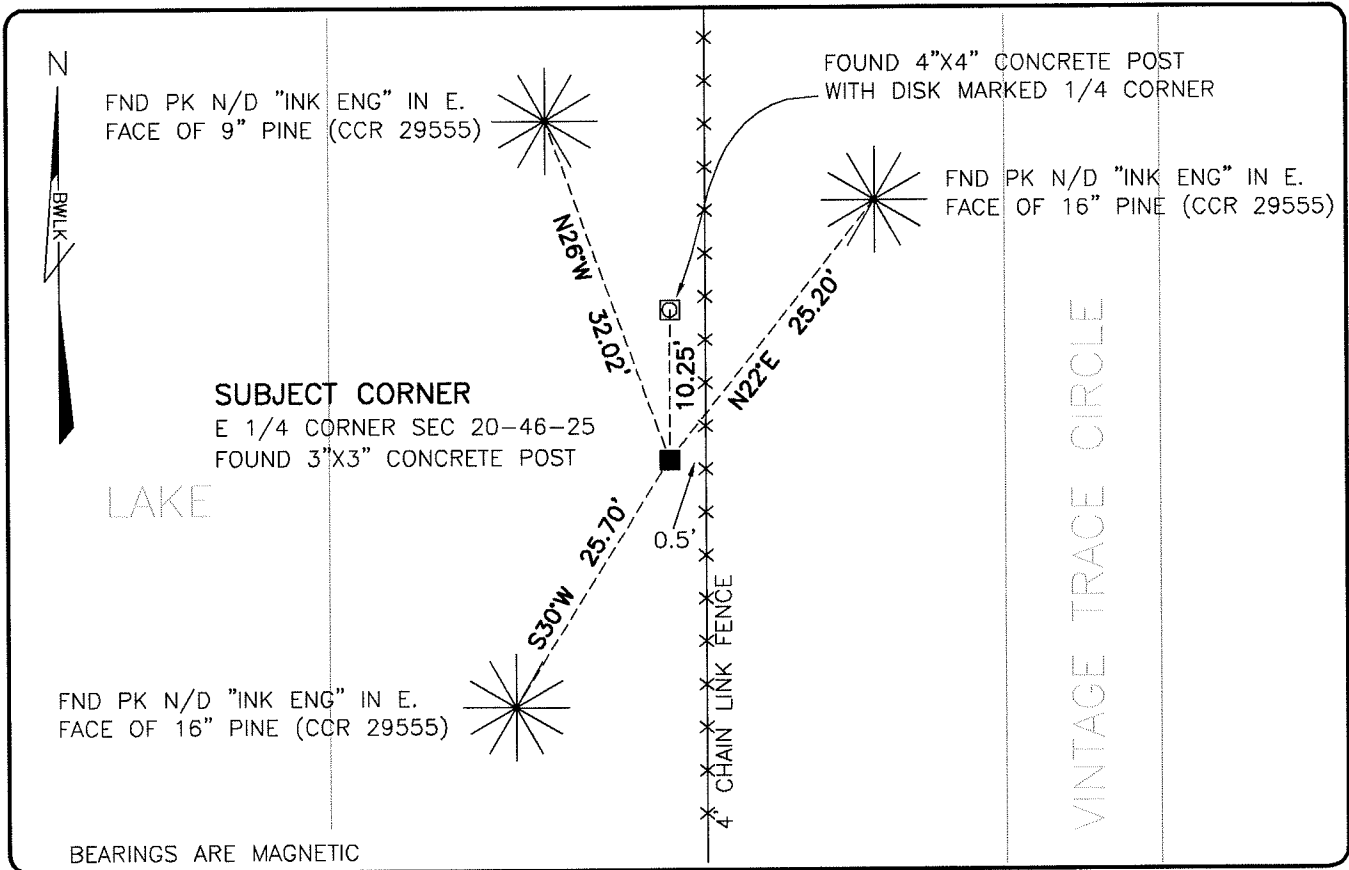


LAND CORNER RECORD

**PUBLIC WORKS
LEE COUNTY, FLORIDA**

Address - 1500 Monroe St., Ft. Myers, Fla. 33901

Phone : (239) 479-8900



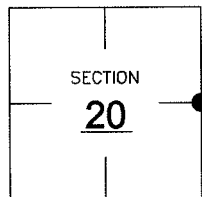
BEARINGS ARE MAGNETIC

COMMENTS:

FOUND SUBJECT CORNER IN HARMONY WITH CCR 29555, 22307 AND THE PLAT OF VINTAGE GOLF AND COUNTRY CLUB PB 37 PG 41. APPEARS TO BE A POSSIBLE DISPUTED CORNER BASED ON FOUND STAMPED MONUMENT LYING 10.25' NORTH.

CORNER DESCRIPTION

E 1/4 Corner
Section 20
Township 46
Range 25



HORIZONTAL POSITION INFORMATION

Florida West Zone, NAD 1983(1990 Adjustment)

Northing(ft) 771654.00 Easting(ft) 714620.33

Latitude 26°27'23.4013" Longitude 81°49'16.8092"

Scale Factor 0.99994

EXISTING CERTIFIED CORNER RECORDS

Document No.	Date
<u>29555</u>	<u>9-20-88</u>
<u>22037</u>	<u>10-26-84</u>
<u>9540</u>	

The above documents are based on FDEP Bureau of Surveying and Mapping Record Information.

I hereby certify the monument and accessories shown above were field located on 8-16-07.

Scott C. Whitaker

SCOTT C. WHITAKER
Professional Surveyor and Mapper
Florida Certificate No. 4324
Date Signed 9/20/07

BEAN, WHITAKER, LUTZ & KAREH, INC. (LB 4919)
13041 McGregor Boulevard
Fort Myers, Florida 33919-5910
Phone: (239) 481-1331

POINT NO. 12195

BLM REFERENCE NO. T46SR25E300340