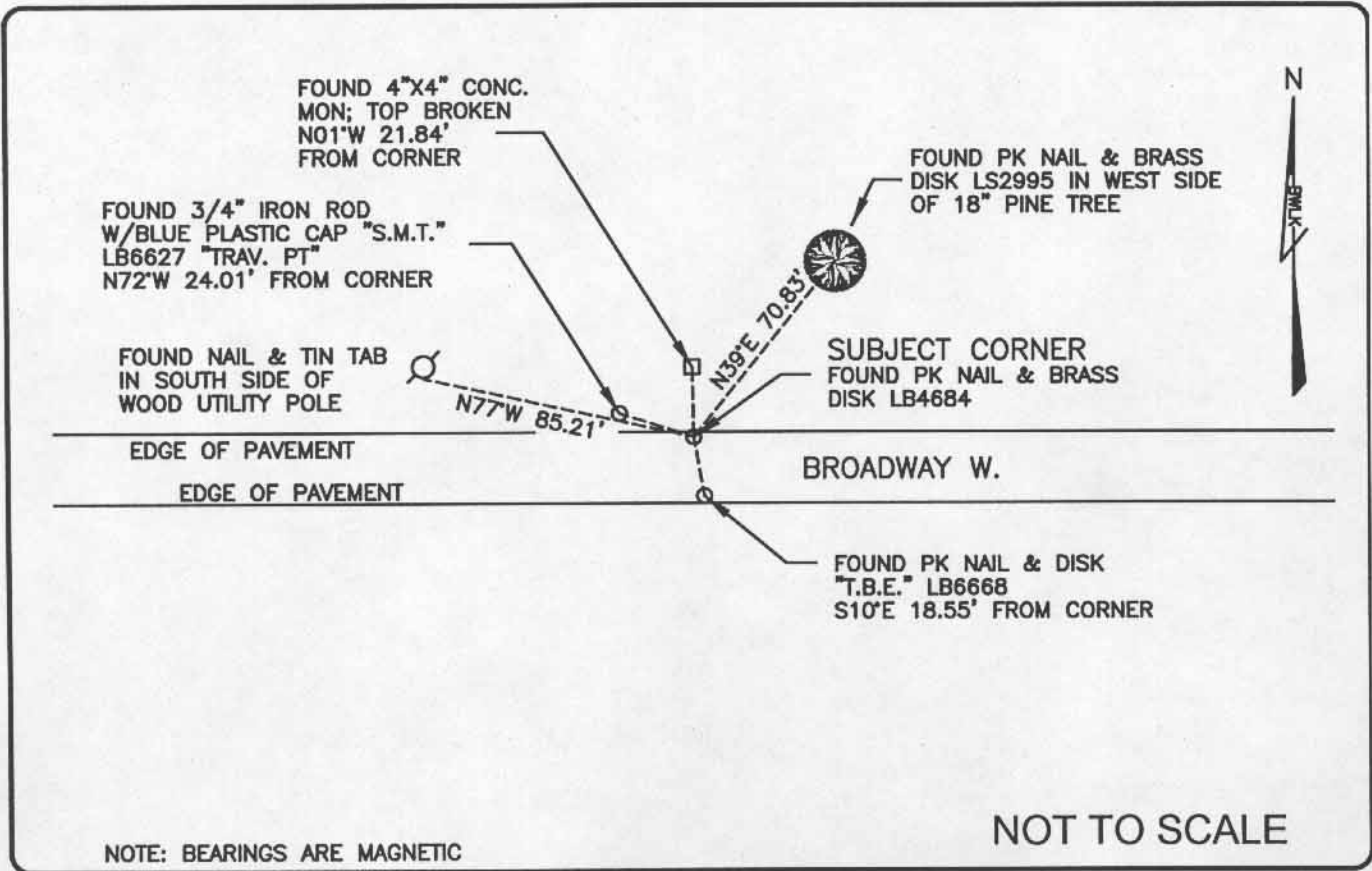


LAND CORNER RECORD

PUBLIC WORKS
LEE COUNTY, FLORIDA

Address - 1500 Monroe St., Ft. Myers, Fla. 33901

Phone : (239) 479-8900



NOTE: BEARINGS ARE MAGNETIC

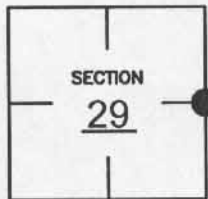
NOT TO SCALE

COMMENTS:

Found pk nail & brass disk, LS4684 at corner. Verified position with measurements to references described on CCR#65551, CCR#66202 and CCR#36824.

CORNER DESCRIPTION

E 1/4 Corner
Section 29
Township 46
Range 25



HORIZONTAL POSITION INFORMATION

Florida West Zone, NAD 1983(1990 Adjustment)
Northing(ft) 766374.936 Easting(ft) 714693.751
Latitude 26°26'31.11" N Longitude 81°49'16.08" W
Scale Factor 0.999945104

EXISTING CERTIFIED CORNER RECORDS

Document No.	Date
<u>66202</u>	<u>12-07-99</u>
<u>65551</u>	<u>6-26-99</u>
<u>36824</u>	<u>8-24-90</u>
_____	_____
_____	_____

The above documents are based on FDEP Bureau of Surveying and Mapping Record Information.

I hereby certify the monument and accessories shown above were field located on 1-27-05.

JAMES R. COLEMAN
Registered Land Surveyor
Florida Certificate No. 3205
Date Signed 2-23-05

BEAN, WHITAKER, LUTZ & KAREH, INC. (LB 4919)
13041 McGregor Boulevard
Fort Myers, Florida 33919-5910
Phone: (239) 481-1331

CO-ORDINATE NO. 12102

BLM REFERENCE NO. T46SR25E300240