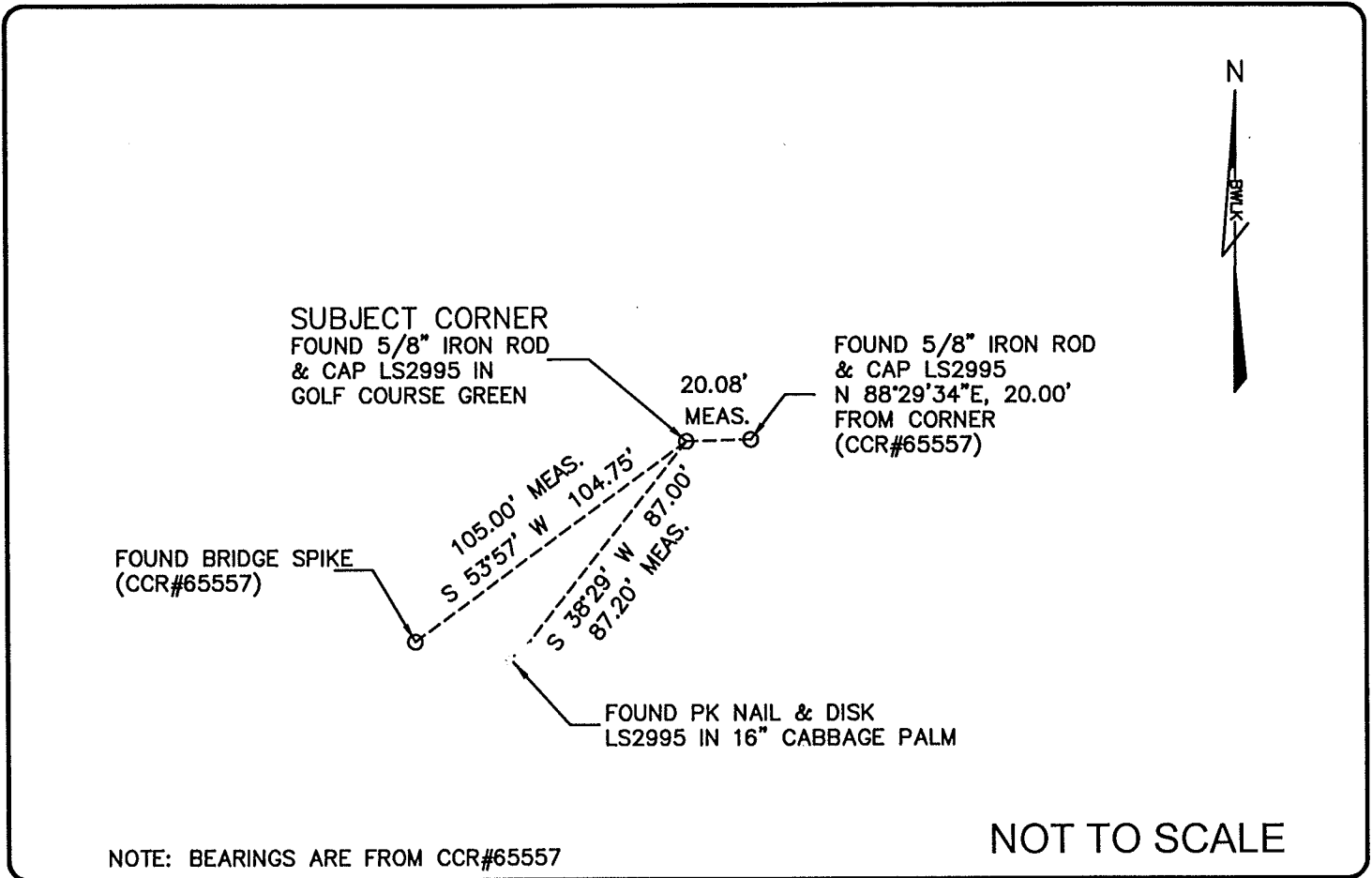


LAND CORNER RECORD

PUBLIC WORKS  
LEE COUNTY, FLORIDA

Address - 1500 Monroe St., Ft. Myers, Fla. 33901

Phone : (239) 479-8900



NOTE: BEARINGS ARE FROM CCR#65557

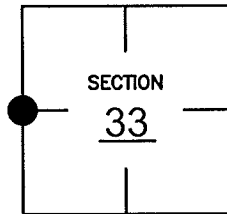
NOT TO SCALE

COMMENTS:

Recovered corner and three references as described on CCR#65557.

CORNER DESCRIPTION

W 1/4 Corner  
Section 33  
Township 46  
Range 25



NOTE: Aim Engineering set this corner using "N.W. corner & S.W. corner of Section 33-46S-25E to set W. 1/4 corner half way between and on line". A review of a 1968 Carl Johnson survey, a deed filed in O.R. 3806, Pg.4589 and CCR's filed by Johnson Engineering indicate that this position for this corner may be approximately 2.6' north of the Johnson corner.

HORIZONTAL POSITION INFORMATION

Florida West Zone, NAD 1983(1990 Adjustment)  
Northing(ft) 761077.242 Easting(ft) 714770.805  
Latitude 26°25'38.64" N Longitude 81°49'15.31" W  
Scale Factor 0.999945114

EXISTING CERTIFIED CORNER RECORDS

Document No.	Date
<u>65557</u>	<u>11-01-99</u>
<u>49808</u>	<u>10-03-94</u>
<u>46849</u>	<u>11-01-93</u>
<u>17824</u>	<u>02-21-83</u>

The above documents are based on FDEP Bureau of Surveying and Mapping Record Information.

I hereby certify the monument and accessories shown above were field located on 08-25-05.

JAMES R. COLEMAN  
Registered Land Surveyor  
Florida Certificate No. 3205  
Date Signed 08-29-05

BEAN, WHITAKER, LUTZ & KAREH, INC. (LB 4919)  
13041 McGregor Boulevard  
Fort Myers, Florida 33919-5910  
Phone: (239) 481-1331