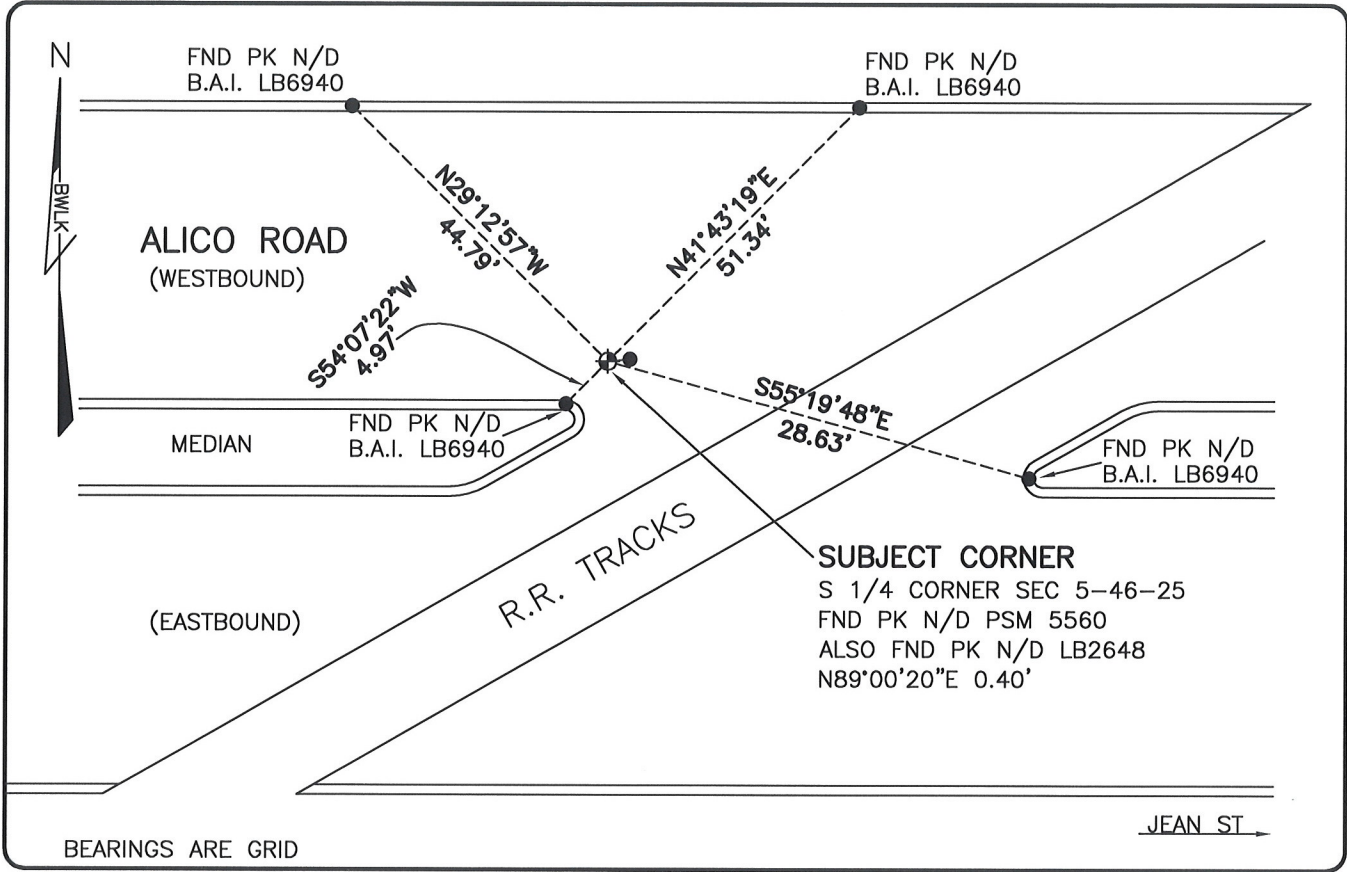


LAND CORNER RECORD

**PUBLIC WORKS
LEE COUNTY, FLORIDA**

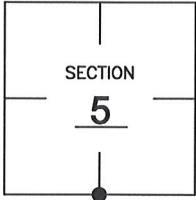
Address - 1500 Monroe St., Ft. Myers, Fla. 33901 Phone : (239) 479-8900



COMMENTS:
FOUND SUBJECT CORNER IN HARMONY WITH HISTORICAL RECORDS AND CO-ORDINATES ON CCR 83805.

CORNER DESCRIPTION

S 1/4 Corner
Section 5
Township 46
Range 25



HORIZONTAL POSITION INFORMATION

Florida West Zone, NAD 1983(1990 Adjustment)
Northing(ft) 784814.68 Easting(ft) 711749.74
Latitude 26°29'33.7862" Longitude 81°49'48.2039"
Scale Factor 0.99994

EXISTING CERTIFIED CORNER RECORDS

Document No.	Date
<u>83805</u>	<u>12-11-04</u>
<u>14676</u>	<u>7-12-82</u>

The above documents are based on FDEP Bureau of Surveying and Mapping Record Information.

I hereby certify the monument and accessories shown above were field located on 3-29-08.

Scott C. Whitaker
SCOTT C. WHITAKER
Professional Surveyor and Mapper
Florida Certificate No. 4324
Date Signed 3/30/08

BEAN, WHITAKER, LUTZ & KAREH, INC. (LB 4919)
13041 McGregor Boulevard
Fort Myers, Florida 33919-5910
Phone: (239) 481-1331

POINT NO. 12197

BLM REFERENCE NO. T46SR25E240600