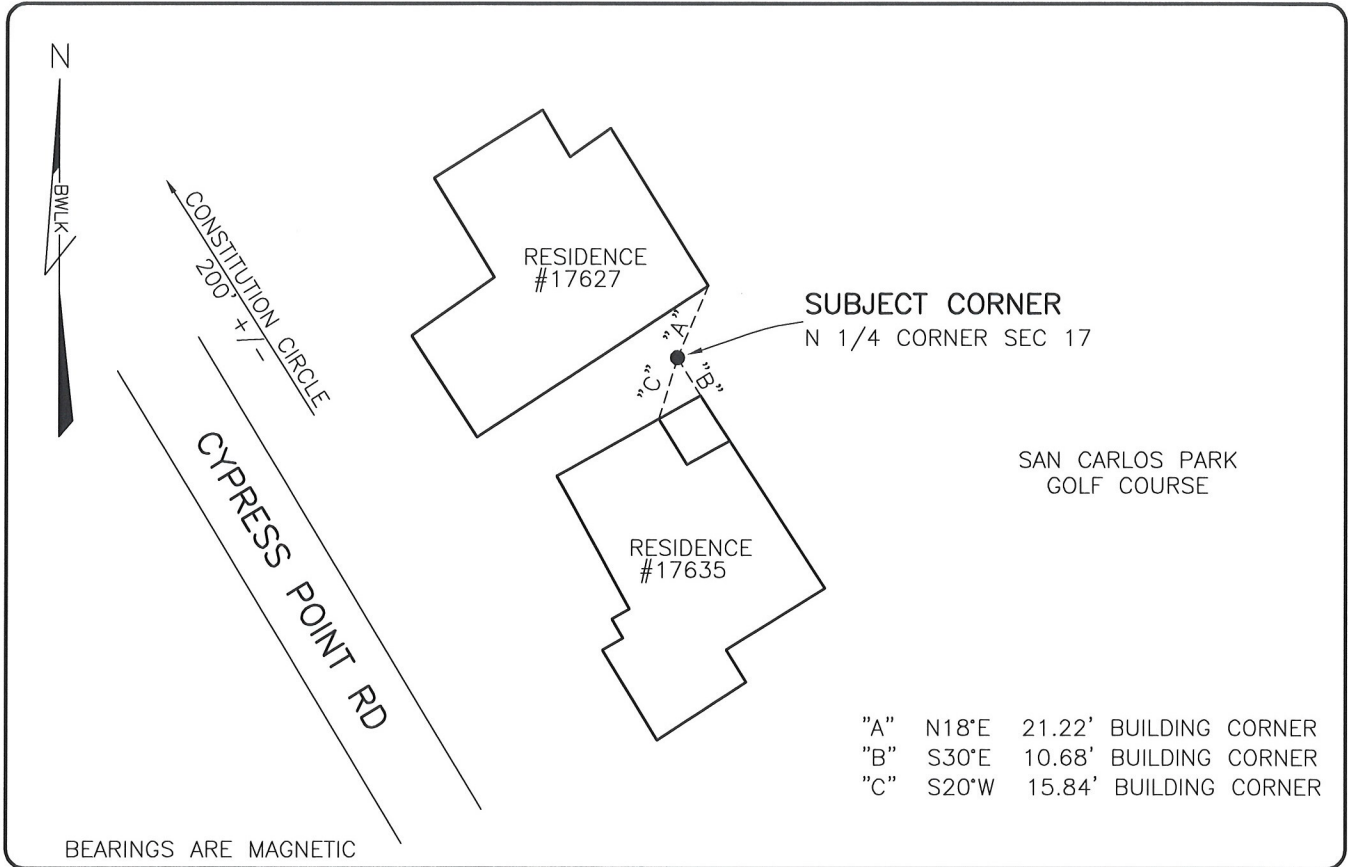


LAND CORNER RECORD

**PUBLIC WORKS
LEE COUNTY, FLORIDA**

Address - 1500 Monroe St., Ft. Myers, Fla. 33901

Phone : (239) 479-8900



SUBJECT CORNER
N 1/4 CORNER SEC 17

SAN CARLOS PARK
GOLF COURSE

- "A" N18°E 21.22' BUILDING CORNER
- "B" S30°E 10.68' BUILDING CORNER
- "C" S20°W 15.84' BUILDING CORNER

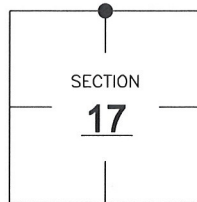
BEARINGS ARE MAGNETIC

COMMENTS:

NO POINT FOUND. HELD CALCULATED POSITION BASED ON PLATS OF SAN CARLOS PARK. DID NOT SET CORNER DUE TO POTENTIAL CONFUSION IN NEIGHBORHOOD AS CORNER FALLS NEAR LOT LINE.

CORNER DESCRIPTION

N 1/4 Corner
Section 17
Township 46
Range 25



HORIZONTAL POSITION INFORMATION

Florida West Zone, NAD 1983(1990 Adjustment)
 Northing(ft) 779521.83 Easting(ft) 711876.39
 Latitude 26°28'41.3630" Longitude 81°49'46.8871"
 Scale Factor 0.99994

EXISTING CERTIFIED CORNER RECORDS

Document No.	Date
<u>9584</u>	_____
_____	_____
_____	_____
_____	_____
_____	_____

The above documents are based on FDEP Bureau of Surveying and Mapping Record Information.

I hereby certify the monument and accessories shown above were field located on 6-13-08.

Scott C. Whitaker
SCOTT C. WHITAKER
 Professional Surveyor and Mapper
 Florida Certificate No. 4324
 Date Signed 7/14/08

BEAN, WHITAKER, LUTZ & KAREH, INC. (LB 4919)
 13041 McGregor Boulevard
 Fort Myers, Florida 33919-5910
 Phone: (239) 481-1331

POINT NO. 12203

BLM REFERENCE NO. T46SR25E240500