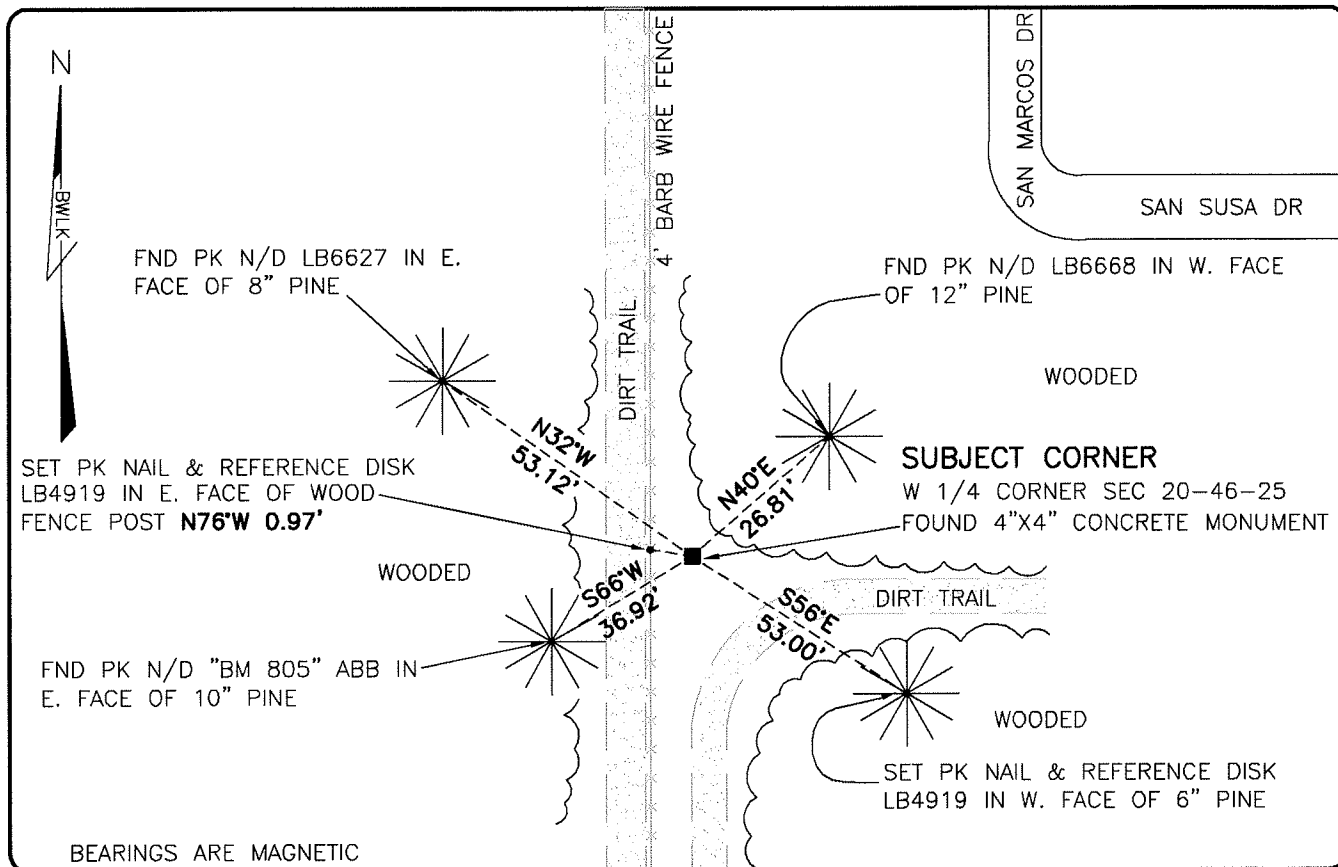


LAND CORNER RECORD

**PUBLIC WORKS
LEE COUNTY, FLORIDA**

Address - 1500 Monroe St., Ft. Myers, Fla. 33901

Phone : (239) 479-8900



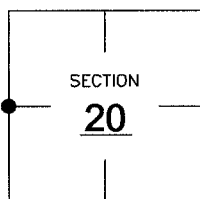
BEARINGS ARE MAGNETIC

COMMENTS:

SUBJECT CORNER IS INCONSISTENT WITH REFERENCES IN CCR 66199 (ON FILE WITH LABINS). CO-ORDINATES VALUES ARE VERY CLOSE.

CORNER DESCRIPTION

W 1/4 Corner
Section 20
Township 46
Range 25



HORIZONTAL POSITION INFORMATION

Florida West Zone, NAD 1983(1990 Adjustment)

Northing(ft) 771537.88 Easting(ft) 709326.31

Latitude 26°27'22.3208" Longitude 81°50'15.0630"

Scale Factor 0.99994

EXISTING CERTIFIED CORNER RECORDS

Document No.	Date
<u>66199</u>	<u>10-27-99</u>
<u>29556</u>	<u>9-20-88</u>
<u>14748</u>	<u>4-15-82</u>
_____	_____
_____	_____

The above documents are based on FDEP Bureau of Surveying and Mapping Record Information.

I hereby certify the monument and accessories shown above were field located on 6-22-07.

Scott C. Whitaker
SCOTT C. WHITAKER
Professional Surveyor and Mapper
Florida Certificate No. 4324
Date Signed 6-22-07

BEAN, WHITAKER, LUTZ & KAREH, INC. (LB 4919)
13041 McGregor Boulevard
Fort Myers, Florida 33919-5910
Phone: (239) 481-1331

POINT NO. 12141

BLM REFERENCE NO. T46SR25E200340