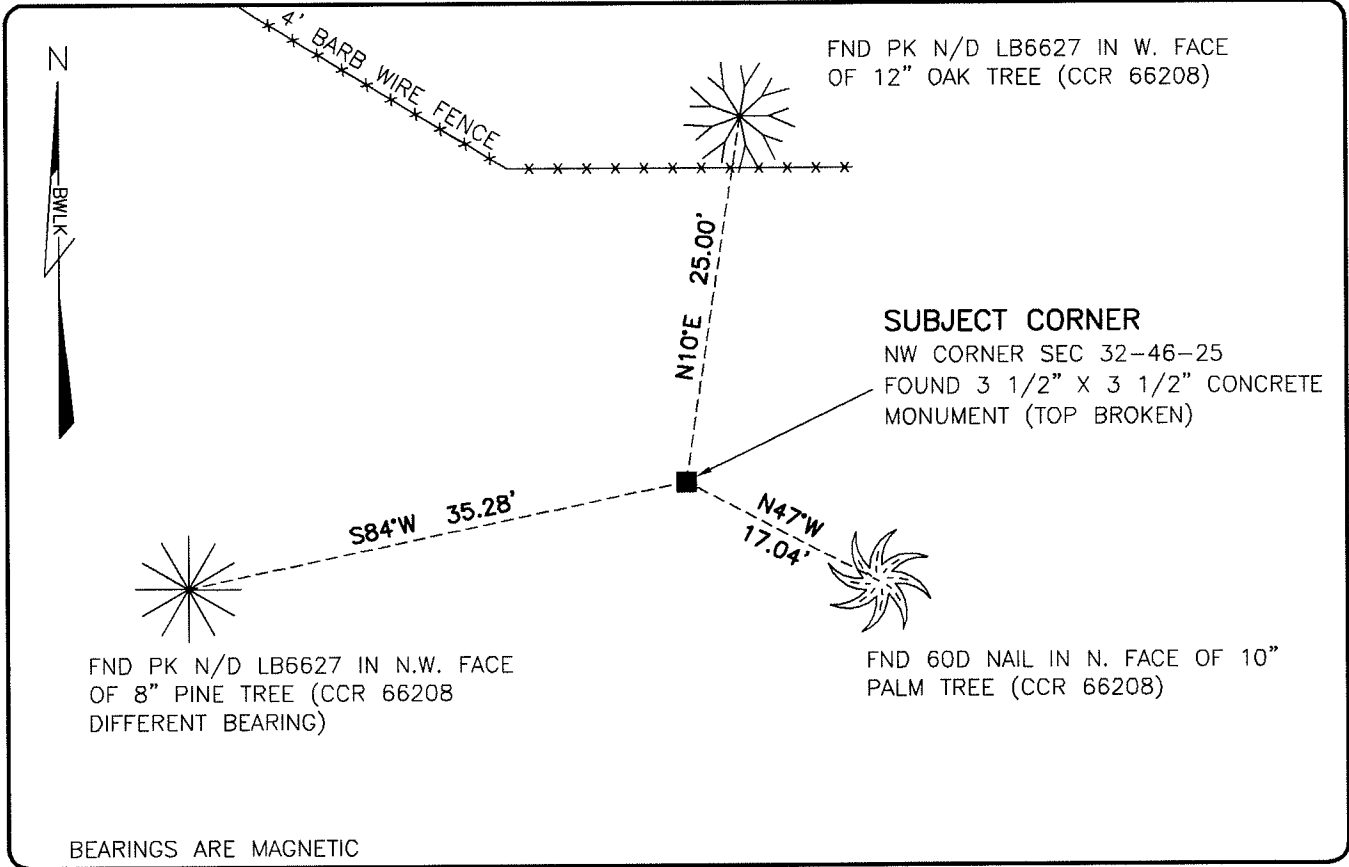


LAND CORNER RECORD

**PUBLIC WORKS
LEE COUNTY, FLORIDA**

Address - 1500 Monroe St., Ft. Myers, Fla. 33901

Phone : (239) 479-8900



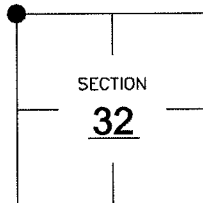
BEARINGS ARE MAGNETIC

COMMENTS:

FOUND SUBJECT CORNER AND TWO REFERENCES IN HARMONY WITH CCR 66208. THE BEARING IN THE OAK TREE ON THE CCR HAS AN ERROR. THE CORRECT BEARING IS SOUTHWEST NOT SOUTHEAST.

CORNER DESCRIPTION

NW Corner
Section 32
Township 46
Range 25



HORIZONTAL POSITION INFORMATION

Florida West Zone, NAD 1983(1990 Adjustment)

Northing(ft) 763581.37 Easting(ft) 709455.46

Latitude 26°26'03.5157" Longitude 81°50'13.7527"

Scale Factor 0.99994

EXISTING CERTIFIED CORNER RECORDS

Document No.	Date
<u>66208</u>	<u>12-7-99</u>
<u>19678</u>	<u>9-10-84</u>
_____	_____
_____	_____
_____	_____

The above documents are based on FDEP Bureau of Surveying and Mapping Record Information.

I hereby certify the monument and accessories shown above were field located on 7-2-07.

Scott C. Whitaker

SCOTT C. WHITAKER
Professional Surveyor and Mapper
Florida Certificate No. 4324
Date Signed 8-22-07

BEAN, WHITAKER, LUTZ & KAREH, INC. (LB 4919)
13041 McGregor Boulevard
Fort Myers, Florida 33919-5910
Phone: (239) 481-1331

POINT NO. 12168

BLM REFERENCE NO. T46SR25E200200