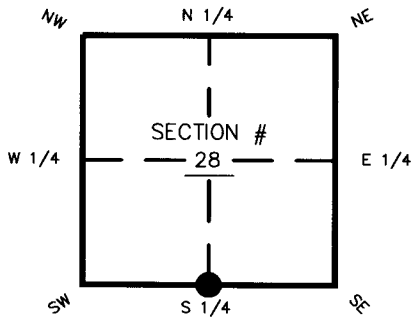


FLORIDA DEPARTMENT OF ENVIRONMENTAL PROTECTION CERTIFIED CORNER RECORD

DOC. # 097571

CORNER DESCRIPTION: MONUMENTATION DESCRIPTION (EVIDENCE FOUND OR METHOD TO SET)

Depict corner with

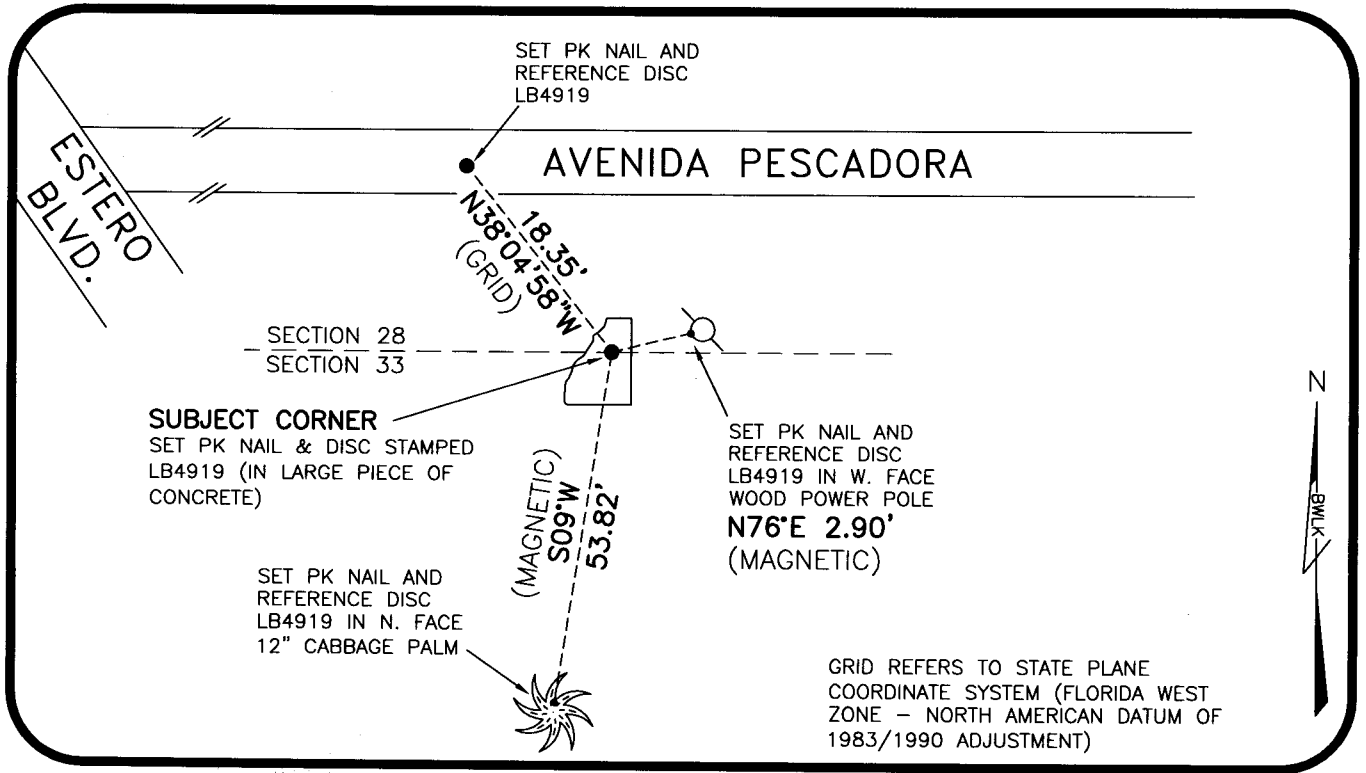


S 1/4 corner of Section 28
Twp 46 S, Rge 24 E
Tallahassee Base Meridian,
LEE County(s), Florida

SET PK NAIL & DISC STAMPED LB4919 IN LARGE PIECE OF CONCRETE. LOCATION OF CORNER RE-ESTABLISHED FROM RECORD PLAT OF HOLIDAY HEIGHTS (PLAT BOOK 9, PAGE 58-FILED NOVEMBER 1952). LOCATION ALSO CONFIRMED BY LOCATION OF SURVEY POINTS WITHIN THE UNRECORDED PLAT OF LAZY ACRES.

HORIZONTAL POSITION INFORMATION (if determined):

Latitude 26°25'59.3321" Longitude 81°54'45.5553"
Y(NORTHING-Ft.) 763134.95 X(EASTING-Ft.) 684749.38 Zone FLW
Convergence _____ Scale factor 0.99994
Coordinate determination (circle one): Field traverse GPS
Horizontal datum (circle one): NAD27 NAD83(1986) NAD83(1990) NAD83(90)
Accuracy (circle one): 1st 2nd 3rd other _____



SURVEYORS CERTIFICATE:

I certify the monument and accessories indicated above were field located on 5-28-09

[Signature]
SIGNATURE _____ 4324
BEAN, WHITAKER, LUTZ & KAREH PSM NO. 4919
FIRM OR AGENCY LB NO. _____
13041 MAGREGOR BLVD ADDRESS
FORT MYERS CITY FLORIDA STATE 33919 ZIP
(239) 481-1331 PHONE NUMBER 5-29-09 DATE

SEND ORIGINAL TO:
Department of Environmental Protection
Bureau of Surveying and Mapping
3900 Commonwealth Boulevard
Mail Station 105
Tallahassee, Florida 32399

D.E.P. USE ONLY

Processed: 06-03-09 JH
B.L.M. - I.D. 340200
QUAD - I.D. 2010 FORT MYERS BEACH

EMBOSSSED SEAL OVER SIGNATURE