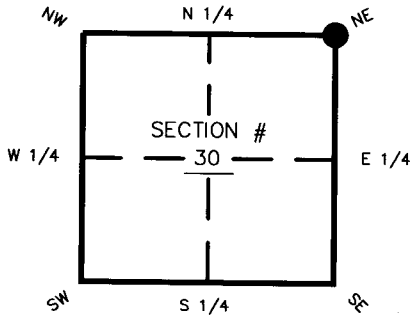


FLORIDA DEPARTMENT OF ENVIRONMENTAL PROTECTION CERTIFIED CORNER RECORD

DOC. # 097431

CORNER DESCRIPTION: **MONUMENTATION DESCRIPTION (EVIDENCE FOUND OR METHOD TO SET)**

Depict corner with

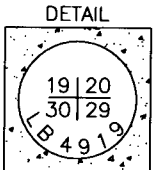
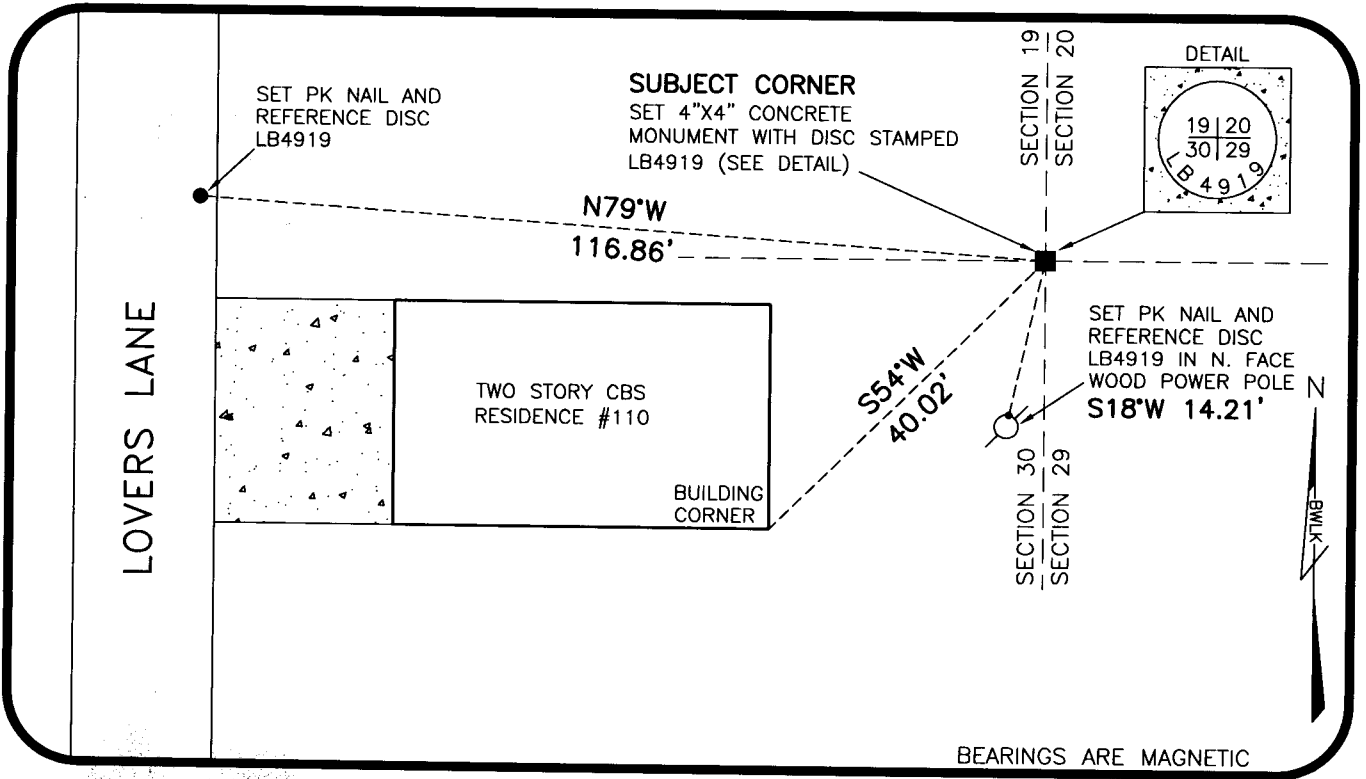


FOUND 4"x6"x12" DEEP CONCRETE MONUMENT LOOSE AT THIS LOCATION. REPLACED WITH 4"x4"x36" CONCRETE MONUMENT STAMPED LB4919. CORNER IS IN HARMONY WITH EXISTING MONUMENTATION WITHIN THE WINKLER'S SECOND DIVISION SUBDIVISION (PLAT BOOK 8 PAGE 49 DATED 1935).

NE corner of Section 30
Twp 46 S, Rge 24 E
Tallahassee Base Meridian,
LEE County(s), Florida

HORIZONTAL POSITION INFORMATION (if determined):

Latitude 26°26'50.7440" Longitude 81°56'14.9098"
 Y(NORTHING-Ft.) 768321.08 X(EASTING-Ft.) 676624.62 Zone FLW
 Convergence _____ Scale factor 0.99995
 Coordinate determination (circle one): Field traverse GPS
 Horizontal datum (circle one): NAD27 NAD83(1986) NAD83(1990) NAD83(90)
 Accuracy (circle one): 1st 2nd 3rd other _____



SURVEYOR'S CERTIFICATE:

I certify the monument and accessories indicated above were field located on 4-21-09

[Signature]
 SIGNATURE: BEAN, WHITAKER, LUTZ & KAREL 4324 PSM NO.
 FIRM OR AGENCY: 13041 McCREGOR BLVD 4919 LB NO.
 ADDRESS: FORT MYERS FLORIDA 33919
 CITY: (239) 481-1331 STATE ZIP
 PHONE NUMBER: _____ 5-12-09 DATE

SEND ORIGINAL TO:
 Department of Environmental Protection
 Bureau of Surveying and Mapping
 3900 Commonwealth Boulevard
 Mail Station 105
 Tallahassee, Florida 32399

D.E.P. USE ONLY

Processed: 06-03-09 JH

B.L.M. - I.D. 200300

QUAD - I.D. 2016 FORT MYERS BEACH

EMBOSSSED SEAL OVER SIGNATURE