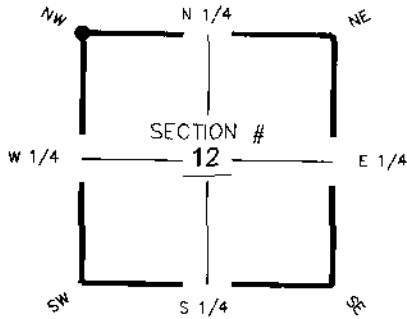


FLORIDA DEPARTMENT OF ENVIRONMENTAL PROTECTION CERTIFIED CORNER RECORD

DOC. # 087314

CORNER DESCRIPTION:

Depict corner with



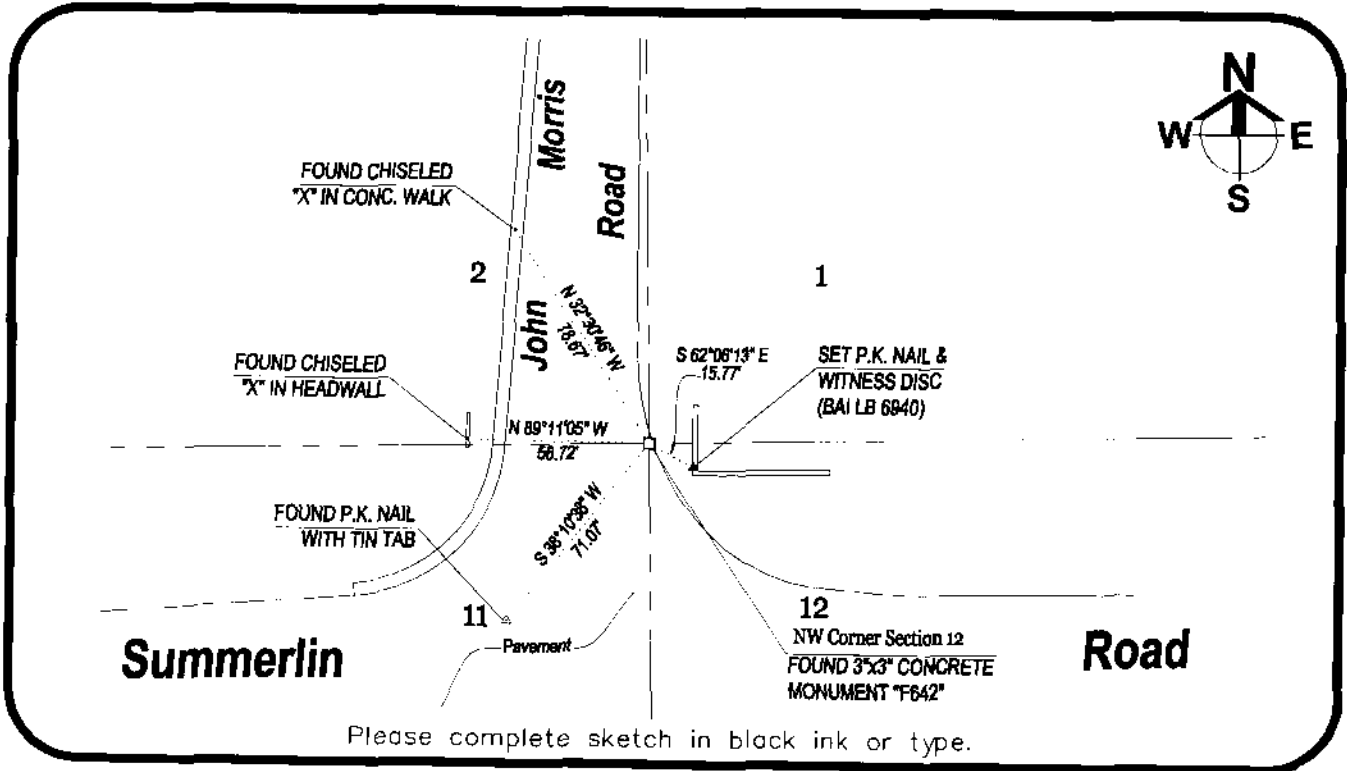
NW corner of Section 12
Twp 46S, Rge 23E
Tallahassee Base Meridian,
Lee County(s), Florida

MONUMENTATION DESCRIPTION (EVIDENCE FOUND OR METHOD TO SET)

RECOVERED 3" x 3" CONCRETE MONUMENT FROM CERTIFIED CORNER RECORD #55142, NEW WITNESS CORNER SET.

HORIZONTAL POSITION INFORMATION (if determined):

Latitude 26°29'38.08016300N Longitude 81°58'03.62188769°W
Y(NORTHING-Ft.) 785212.7870 X(EASTING-Ft.) 666739.7664 Zone WEST
Convergence 0°00'51.9166 Scale factor 0.99994130
Coordinate determination (circle one): Field traverse GPS NAD83(1999)
Horizontal datum (circle one): NAD27 NAD83(1986) NAD83(1990) other (explain) _____
Accuracy (circle one): 1st 2nd 3rd other _____



Please complete sketch in black ink or type.

SURVEYORS CERTIFICATE:

I certify the monument and accessories indicated above were field located on 12-07-2005

Sara A. Schell 5949
SIGNATURE PSM NO.
Barraco & Associates 6940
FIRM OR AGENCY LB NO.
2271 McGregor Boulevard ADDRESS
Fort Myers FL 33901
CITY STATE ZIP
(239) 461-3170 01-17-2006
PHONE NUMBER DATE

EMBOSSSED SEAL OVER SIGNATURE

SEND ORIGINAL TO:
Department of Environmental Protection
Bureau of Surveying and Mapping
3900 Commonwealth Boulevard
Mail Station 105
Tallahassee, Florida 32399

Processed: 3-16-06 MB D.E.P. USE ONLY
B.L.M. - I.D. 000600
QUAD - I.D. 2016 Ft. Myers Beach