

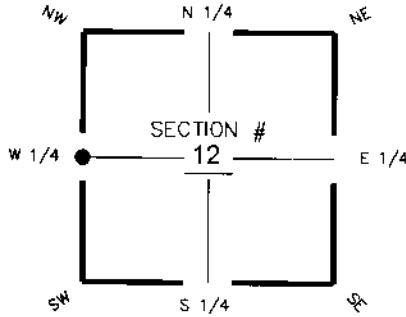
FLORIDA DEPARTMENT OF ENVIRONMENTAL PROTECTION CERTIFIED CORNER RECORD

DOC. # 087318

CORNER DESCRIPTION: **MONUMENTATION DESCRIPTION (EVIDENCE FOUND OR METHOD TO SET)**

Depict corner with

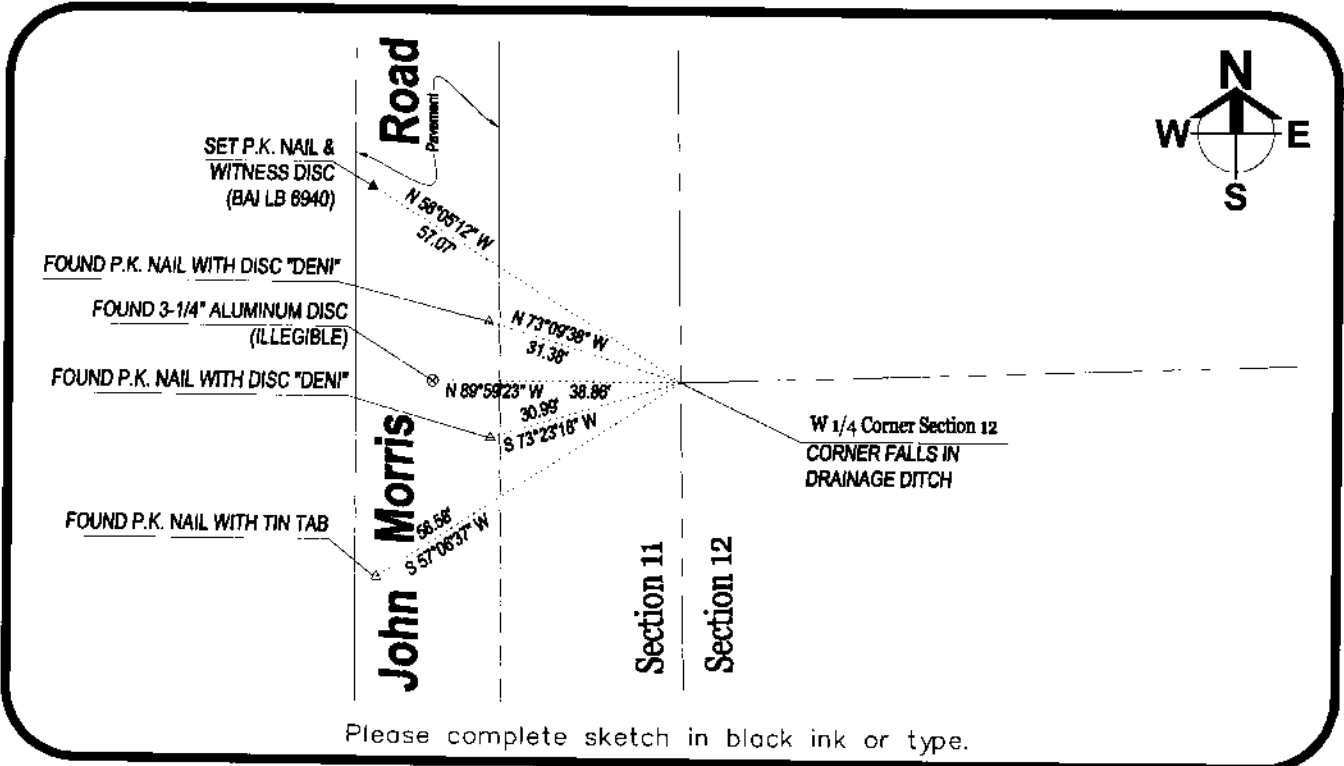
RECOVERED WITNESS CORNERS FROM FROM CERTIFIED CORNER RECORD #55139.
NEW WITNESS CORNER SET.



W 1/4 corner of Section 12
Twp 46S, Rge 23E
Tallahassee Base Meridian,
Lee County(s), Florida

HORIZONTAL POSITION INFORMATION (if determined):

Latitude 26°29'11.17162502N Longitude 81°58'03.16217478"W
Y(NORTHING-Ft.) 782495.9292 X(EASTING-Ft.) 666782.2183 Zone WEST
Convergence 0°00'52.1080 Scale factor 0.99994131
Coordinate determination (circle one): Field traverse GPS NAD83(1999)
Horizontal datum (circle one): NAD27 NAD83(1986) NAD83(1990) other (explain)
Accuracy (circle one): 1st 2nd 3rd other _____



SURVEYORS CERTIFICATE:

I certify the monument and accessories indicated above were field located on 12-07-2005

Scott A. Barraco 5949
SIGNATURE PSM NO.
Barraco & Associates 6940
FIRM OR AGENCY LB NO.
2271 McGregor Boulevard
ADDRESS
Fort Myers, FL 33901
CITY STATE ZIP
(239) 461-3170 01-17-2006
PHONE NUMBER DATE

SEND ORIGINAL TO:
Department of Environmental Protection
Bureau of Surveying and Mapping
3900 Commonwealth Boulevard
Mail Station 105
Tallahassee, Florida 32399

D.E.P. USE ONLY
Processed: 3-16-06 MB
B.L.M. - I.D. 600540
QUAD - I.D. 2016 Ft. Myers Beach

EMBOSSSED SEAL OVER SIGNATURE