

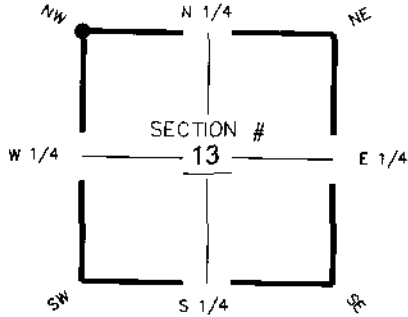
FLORIDA DEPARTMENT OF ENVIRONMENTAL PROTECTION CERTIFIED CORNER RECORD

DOC. # 087319

CORNER DESCRIPTION: **MONUMENTATION DESCRIPTION (EVIDENCE FOUND OR METHOD TO SET)**

Depict corner with

RECOVERED 3-1/2" ALUMINUM DISC FROM FROM CERTIFIED CORNER RECORD #55141.
NEW WITNESS CORNERS SET.

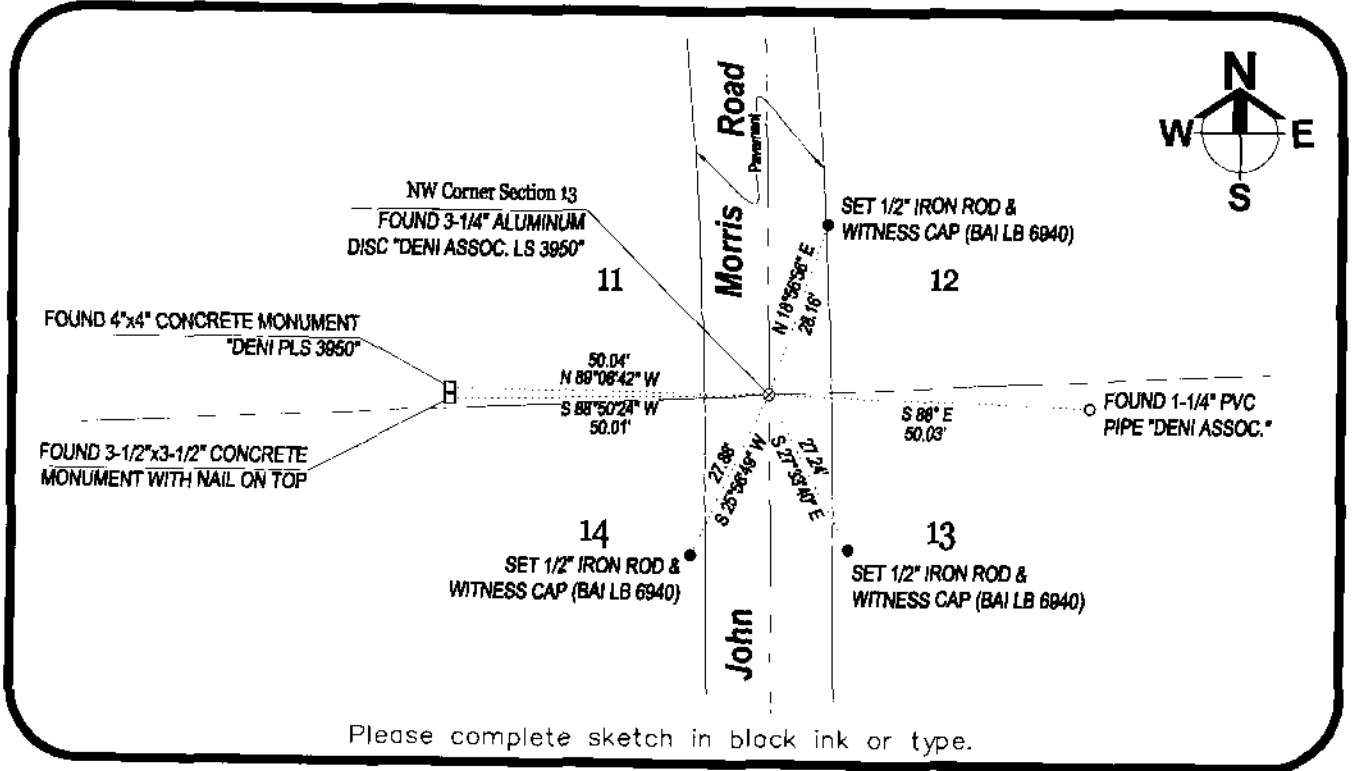


NW corner of Section 13
Twp 46S Rge 23E
Tallahassee Base Meridian,
Lee County(s), Florida

HORIZONTAL POSITION INFORMATION (if determined):

Latitude 26°28'44.26305847N Longitude 81°58'02.70251933W
Y(NORTHING-Ft.) 779779.0714 X(EASTING-Ft.) 666824.6703 Zone WEST
Convergence 0°00'52.2993 Scale factor 0.99994131

Coordinate determination (circle one): Field traverse GPS NAD83(1999)
Horizontal datum (circle one): NAD27 NAD83(1986) NAD83(1990) other (explain)
Accuracy (circle one): 1st 2nd 3rd other _____



SURVEYORS CERTIFICATE:

I certify the monument and accessories indicated above were field located on 12-07-2005

Sara A. Whitham 5949
SIGNATURE PSM NO.
Barraco & Associates 6940
FIRM OR AGENCY LB NO.
2271 McGregor Boulevard ADDRESS
Fort Myers FL 33901
CITY STATE ZIP
(239) 461-3170 01-17-2006
PHONE NUMBER DATE

SEND ORIGINAL TO:
Department of Environmental Protection
Bureau of Surveying and Mapping
3900 Commonwealth Boulevard
Mail Station 105
Tallahassee, Florida 32399

D.E.P. USE ONLY

Processed: 3-16-06 MB
B.L.M. - I.D. 600500
QUAD - I.D. 2016 Ft Myers Beach

EMBOSSSED SEAL OVER SIGNATURE