

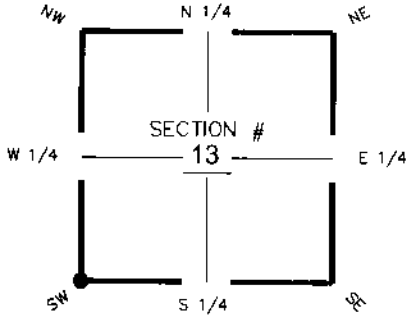
# FLORIDA DEPARTMENT OF ENVIRONMENTAL PROTECTION CERTIFIED CORNER RECORD

DOC. # 087321

**CORNER DESCRIPTION:**      **MONUMENTATION DESCRIPTION (EVIDENCE FOUND OR METHOD TO SET)**

Depict corner with

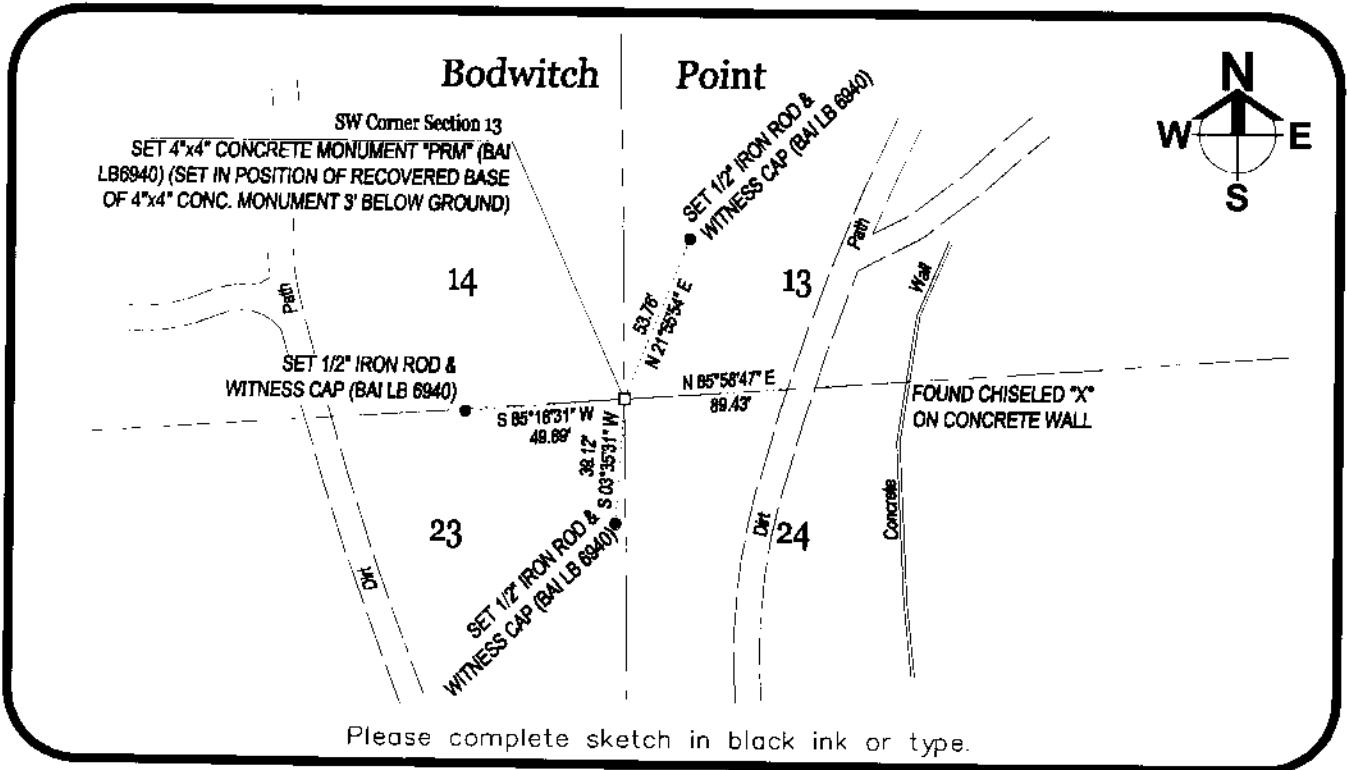
RECOVERED BASE OF 4"x4" CONCRETE MONUMENT FROM CERTIFIED CORNER RECORD #55149, SET 4"x4" CONCRETE MONUMENT IN SAME POSITION. NEW WITNESS CORNERS SET.



SW corner of Section 13  
Twp. 46S Rge. 23E  
Tallahassee Base Meridian,  
Lee County(s), Florida

**HORIZONTAL POSITION INFORMATION ( if determined ):**

Latitude 26°27'50.62556588N Longitude 81°58'01.78747496°W  
Y(NORTHING-Ft.) 774363.5020 X(EASTING-Ft.) 666909.1975 Zone WEST  
Convergence 0°00'52.6798 Scale factor 0.99994131  
Coordinate determination (circle one):      Field traverse       GPS       NAD83(1999)  
Horizontal datum (circle one):      NAD27      NAD83(1986)      NAD83(1990)      other (explain)  
Accuracy (circle one):       1st      2nd      3rd      other \_\_\_\_\_



**SURVEYORS CERTIFICATE:**

I certify the monument and accessories indicated above were field located on 12-07-2005

*[Signature]*      5949  
SIGNATURE      PSM NO.  
**Barraco & Associates**      6940  
FIRM OR AGENCY      LB NO.  
2271 McGregor Boulevard  
ADDRESS  
**Fort Myers**      FL      33901  
CITY      STATE      ZIP  
(239) 461-3170      01-17-2006  
PHONE NUMBER      DATE

**SEND ORIGINAL TO:**  
Department of Environmental Protection  
Bureau of Surveying and Mapping  
3900 Commonwealth Boulevard  
Mail Station 105  
Tallahassee, Florida 32399

D.E.P. USE ONLY

Processed: 3-16-06 MB

B.L.M. - I.D. 600400

QUAD - I.D. 2016 Ft. Myers Beach

EMBOSSSED SEAL OVER SIGNATURE