

FLORIDA DEPARTMENT OF ENVIRONMENTAL PROTECTION CERTIFIED CORNER RECORD

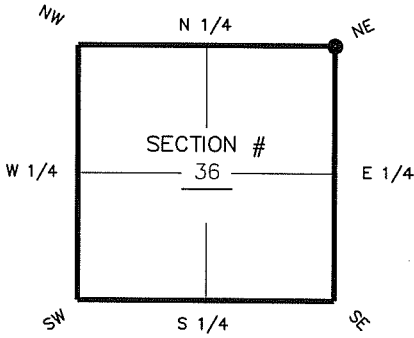
DOC. # _____

V-25

CORNER DESCRIPTION: MONUMENTATION DESCRIPTION (EVIDENCE FOUND OR METHOD TO SET)

Depict corner with

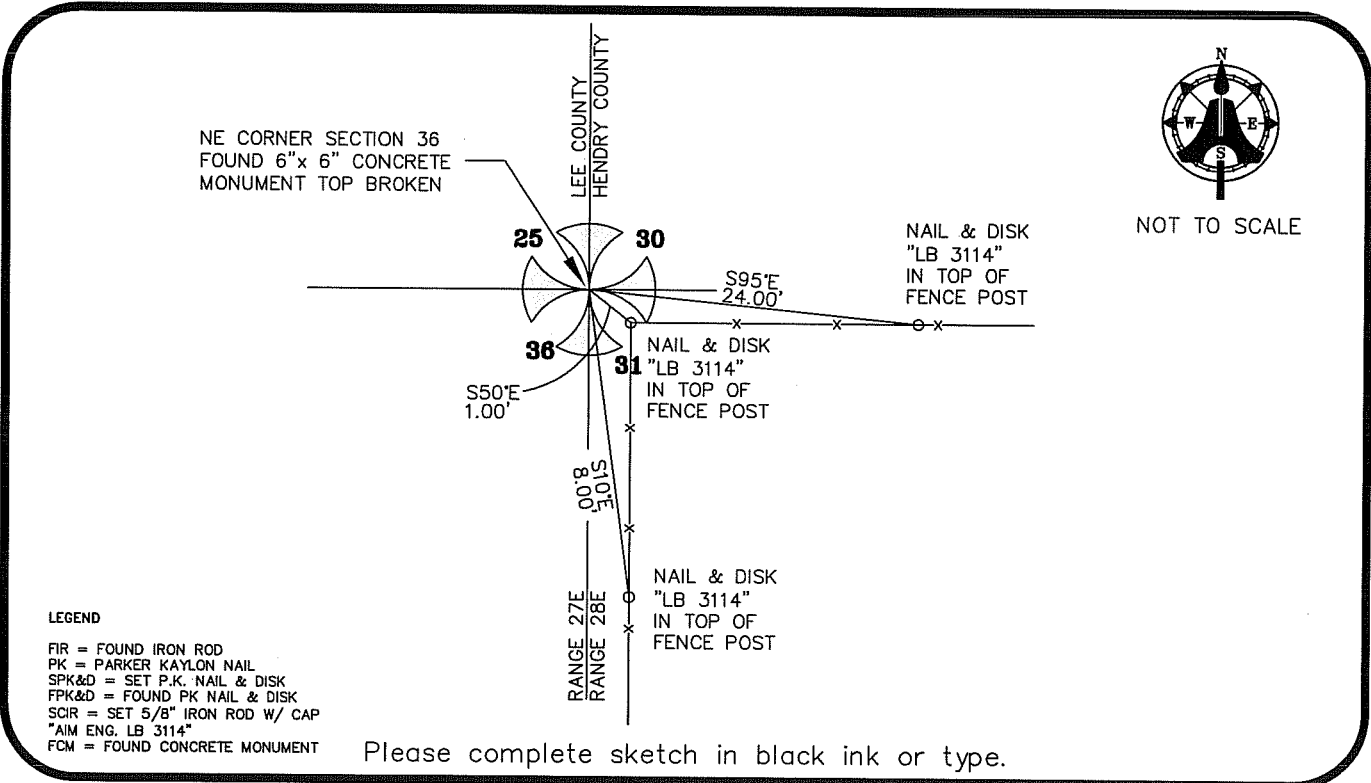
FOUND 6"x 6" CONCRETE MONUMENT TOP BROKEN



NE corner of Section 36
Twp 45 S, Rge 27 E
Tallahassee Base Meridian,
LEE County(s), Florida

HORIZONTAL POSITION INFORMATION (if determined):

Latitude 26° 31' 40.2503" N Longitude 81° 33' 50.3428" W
Y(NORTHING-Ft.) 797788.90 X(EASTING-Ft.) 798730.96 Zone FL W
Convergence 00° 11' 41.1" Scale factor 0.99996448
Coordinate determination (circle one): Field traverse GPS
Horizontal datum (circle one): NAD27 NAD83(1986) NAD83(1986) other (explain)
Accuracy (circle one): 1st 2nd 3rd other NAD83(1999)



LEGEND

- FIR = FOUND IRON ROD
- PK = PARKER KAYLON NAIL
- SPK&D = SET P.K. NAIL & DISK
- FPK&D = FOUND PK NAIL & DISK
- SCR = SET 5/8" IRON ROD W/ CAP
- *AIM ENG. LB 3114*
- FCM = FOUND CONCRETE MONUMENT

Please complete sketch in black ink or type.

SURVEYORS CERTIFICATE:

I certify the monument and accessories indicated above were field located on MARCH 9, 2007

SIGNATURE 5688
AIM ENGINEERING & SURVEYING, INC. PSM NO. LB 3114
FIRM OR AGENCY LB NO.
5300 LEE BOULEVARD
ADDRESS
LEHIGH ACRES, FLORIDA 33971-1026
CITY STATE ZIP
(239) 332-4569 7/12/07
PHONE NUMBER DATE

SEND ORIGINAL TO:
Department of Environmental Protection
Bureau of Surveying and Mapping
3900 Commonwealth Boulevard
Mail Station 105
Tallahassee, Florida 32399

D.E.P. USE ONLY	
Processed: _____	_____
B.L.M. - I.D. _____	_____
QUAD - I.D. _____	_____

EMBOSS SEAL OVER SIGNATURE