

FLORIDA DEPARTMENT OF ENVIRONMENTAL PROTECTION CERTIFIED CORNER RECORD

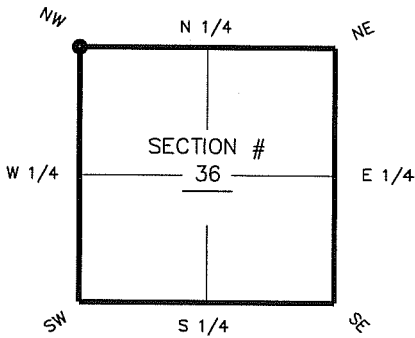
DOC. # _____

V-21

CORNER DESCRIPTION: MONUMENTATION DESCRIPTION (EVIDENCE FOUND OR METHOD TO SET)

Depict corner with

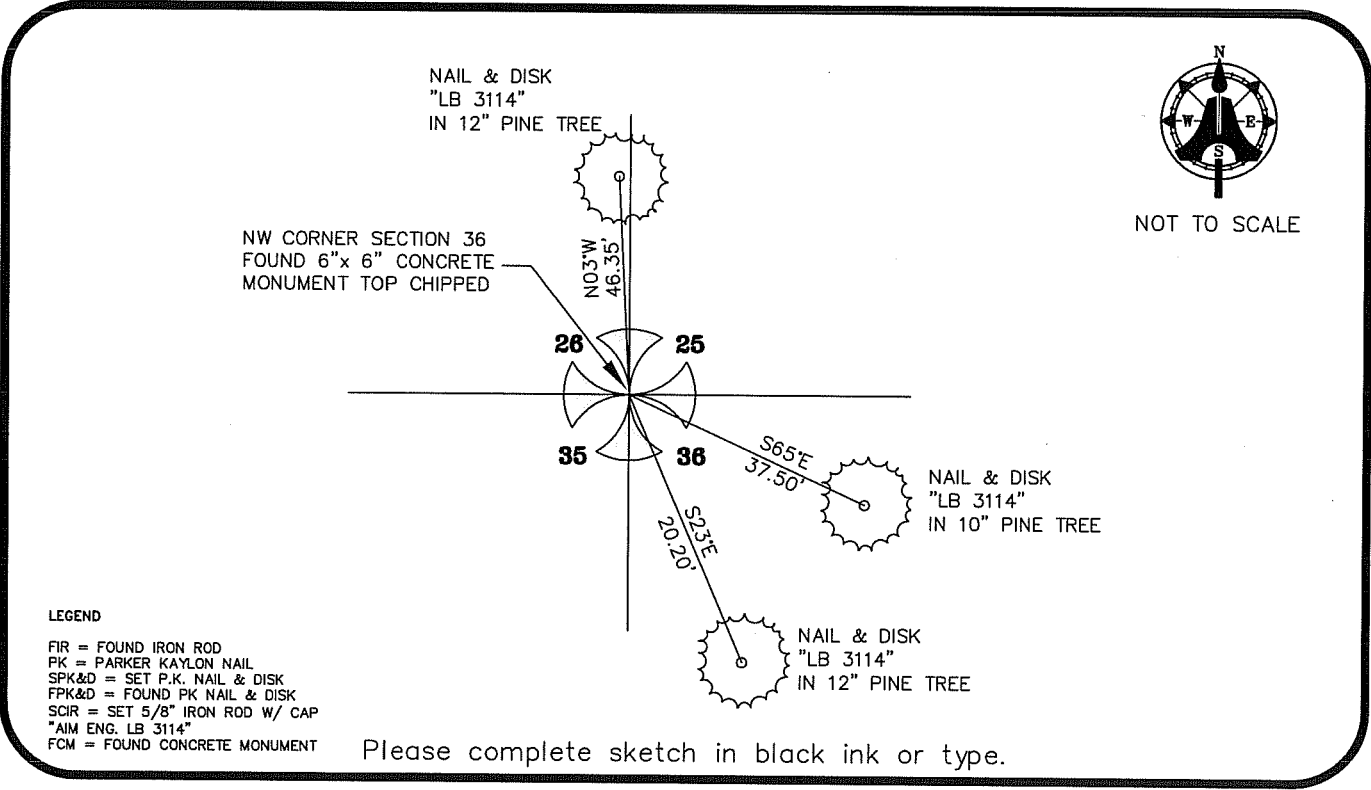
FOUND 6"x 6" CONCRETE MONUMENT TOP CHIPPED



NW corner of Section 36
Twp 45 S, Rge 27 E
Tallahassee Base Meridian,
LEE County(s), Florida

HORIZONTAL POSITION INFORMATION (if determined):

Latitude 26° 31' 39.4645" N Longitude 81° 34' 48.9561" W
Y(NORTHING-Ft.) 797691.81 X(EASTING-Ft.) 793408.09 Zone FL W
Convergence 00° 11' 14.9" Scale factor 0.99996277
Coordinate determination (circle one): Field traverse GPS
Horizontal datum (circle one): NAD27 NAD83(1986) NAD83(1986) other (explain)
Accuracy (circle one): 1st 2nd 3rd other NAD83(1999)



NOT TO SCALE

LEGEND
FIR = FOUND IRON ROD
PK = PARKER KAYLON NAIL
SPK&D = SET P.K. NAIL & DISK
FPK&D = FOUND PK NAIL & DISK
SCIR = SET 5/8" IRON ROD W/ CAP
"AIM ENG. LB 3114"
FCM = FOUND CONCRETE MONUMENT

Please complete sketch in black ink or type.

SURVEYORS CERTIFICATE:

I certify the monument and accessories indicated above were field located on FEB 22, 2007

 5688
SIGNATURE PSM NO.
AIM ENGINEERING & SURVEYING, INC. LB 3114
FIRM OR AGENCY LB NO.
5300 LEE BOULEVARD
ADDRESS
LEHIGH ACRES, FLORIDA 33971-1026
CITY STATE ZIP
(239) 332-4569 7/12/07
PHONE NUMBER DATE

SEND ORIGINAL TO:
Department of Environmental Protection
Bureau of Surveying and Mapping
3900 Commonwealth Boulevard
Mail Station 105
Tallahassee, Florida 32399

D.E.P. USE ONLY	
Processed:	_____
B.L.M. - I.D.	_____
QUAD - I.D.	_____

EMBOSSSED SEAL OVER SIGNATURE