

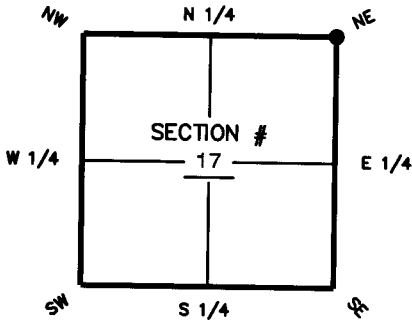
FLORIDA DEPARTMENT OF ENVIRONMENTAL PROTECTION CERTIFIED CORNER RECORD

DOC. # 091874

CORNER DESCRIPTION: MONUMENTATION DESCRIPTION (EVIDENCE FOUND OR METHOD TO SET)

Depict corner with

FOUND 5" X 5" CONCRETE MONUMENT
WITH 5/8" IRON ROD (NO IDENTIFICATION)

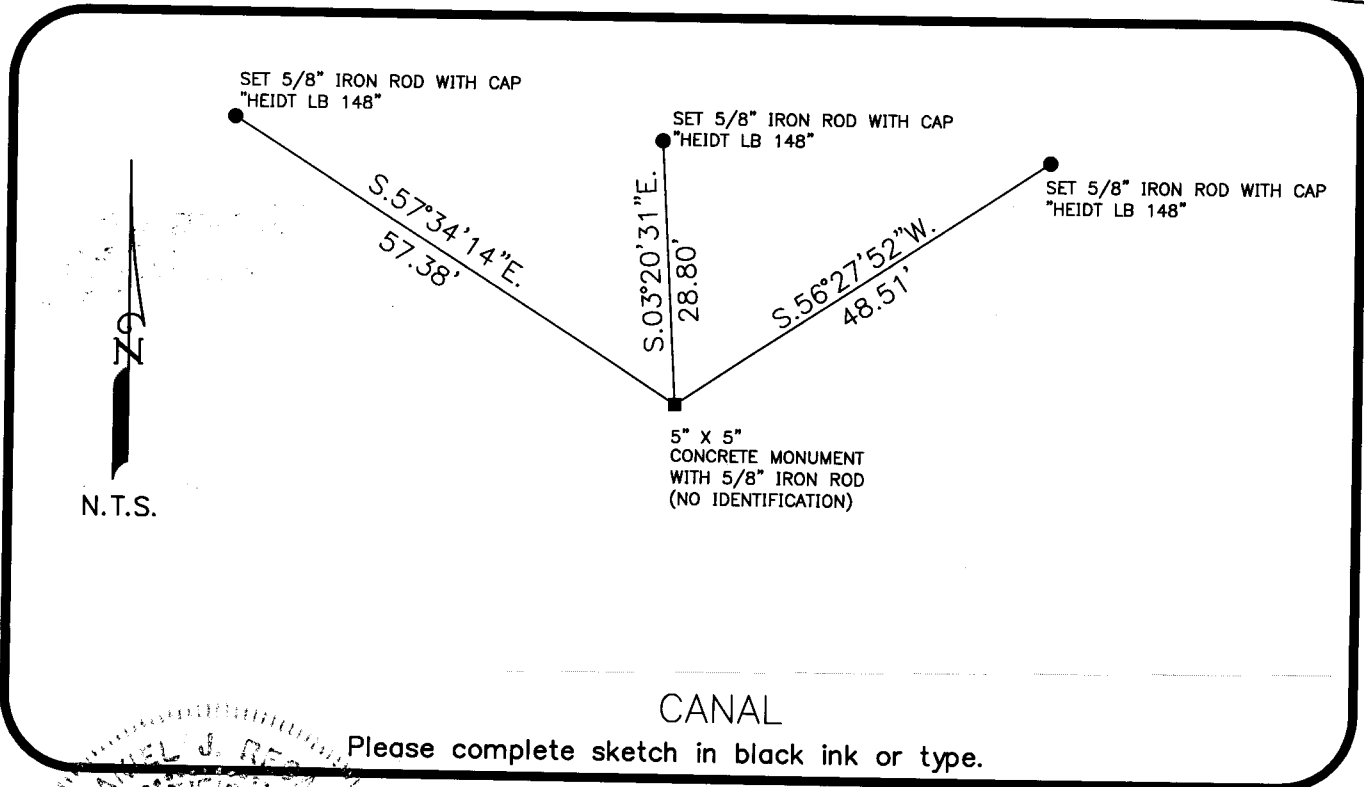


NE corner of Section 17
Twp 45 S Rge 27 E
Tallahassee Base Meridian,
Lee County(s), Florida

HORIZONTAL POSITION INFORMATION (if determined):

Latitude _____ Longitude _____
Y(NORTHING-Ft.) 813139.89 X(EASTING-Ft.) 777386.32 Zone WEST
Convergence _____ Scale factor _____

Coordinate determination (circle one): Field traverse GPS
Horizontal datum (circle one): NAD27 NAD83(1986) NAD83(1990) other (NAD83(CORS96) (EPOCH2002))
Accuracy (circle one): 1st 2nd (3rd) other _____



CANAL

Please complete sketch in black ink or type.

SURVEYORS' CERTIFICATE

I certify the monument and accessories indicated above were field located on 08/27/07

[Signature]
HEIDT & ASSOCIATES, INC.
3800 COLONIAL BLVD #200
FORT MYERS, FL 33966
(239)482-7275

SEND ORIGINAL TO:
Department of Environmental Protection
Bureau of Surveying and Mapping
3900 Commonwealth Boulevard
Mall Station 105
Tallahassee, Florida 32399

D.E.P. USE ONLY

Processed: 10-8-07 MB
B.L.M. - I.D. 300500
QUAD - I.D. 2114 A1VA SW

EMBOSSSED SEAL OVER SIGNATURE